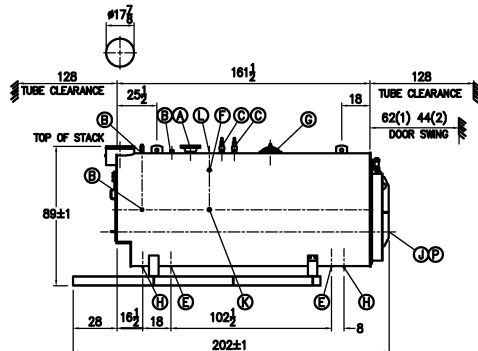
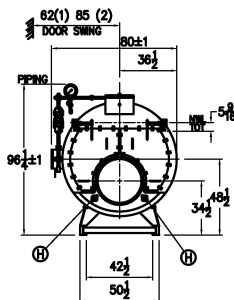


BOILER JUNCTION BOX



#### BOILER CONNECTIONS

A.(1) STEAM OUTLET	6" 300# FLANGE
B.(4) LWCO	1" NPT
C.(2) SAFETY VALVE	2" NPT
D.( ) SAFETY VALVE	
E.(2) BOILER BLOWDOWN	1 1/4" NPT
F.(1) SURFACE BLOWDOWN	1" NPT
G.(1) MANWAY	12" x 18"
H.(4) HANDHOLE	3" x 4"
J.(1) CLEANOUT PORT	17" ID
K.(2) FEEDWATER	2" NPT
L.(1) AUXILIARY/VENT	2" NPT
M.(1) LOW FIRE HOLD	1" NPT
N.(1) STACK TEMP	1/2" NPT
P.(1) SIGHT PORT	1 1/4" NPT
Q.( )	
R.( )	
S.( )	

#### RATINGS & CAPACITIES

HORSEPOWER	200
DESIGN PRESSURE	150 PSI STEAM
GROSS OUTPUT	6695 MBH
STEAM (FROM & AT 212°F)	6900 Lbs/Hr
HEAT RELEASE (FURNACE ONLY)	168116 BTU/CuFt
RATED INPUT	8369 MBH
HEATING SURFACE (ASME)	1007 SqFt
FURNACE HEATING SURFACE	91.67 SqFt
FURNACE VOLUME:	
FURNACE ONLY	49.76 CuFt
STEAMING VOLUME	26.62 CuFt
STEAM RELEASE AREA	45.44 SqFt
WATER CAPACITY:	
(FULL)	1,299 GAL @ 10,804 Lbs
(NWL)	1,100 GAL @ 9,147 Lbs
SHIPPING WEIGHT:	16,000 Lbs

LTR DATE

REVISION

BY REPRESENTATIVE:

?

PROJECT:

?

#### NOTES

1. ALL CONTROLS MOUNTED AS PER SPECIFICATION SHEET.
2. SPECIFICATION SHEET TAKES PRIORITY OVER R & D SHEET.
3. REAR DOOR SWING:
  - (1) MIN SIDE, MAX REAR
  - (2) MAX SIDE, MIN REAR
4. BOILER DESIGN CODE ASME SECTION I.
5. BOILER INSULATED WITH 2" OF INSULATION WITH 22 GAUGE STEEL JACKET.
6. ALL DIMENSIONS ARE  $\pm 1/2"$  UNLESS OTHERWISE NOTED.

**SUPERIOR BOILER**

CHECKED BY

DRAWN BY

?

DATE

DATE

THIS DRAWING IS THE PROPERTY OF SUPERIOR BOILER WORKS & SHALL NOT BE REPRODUCED IN PART OR IN WHOLE, & NONE OF ITS INFORMATION SHALL BE REVEALED WITHOUT PERMISSION OR TO THE DETRIMENT OF THE OWNER. IT MUST BE RETURNED UPON REQUEST.

APACHE BOILER MODEL  
8-5-1000-S150

SCALE

DRAWING No

1/56

?