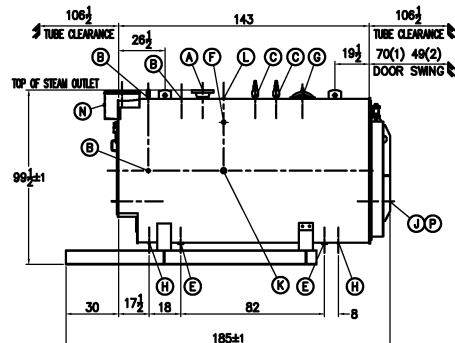
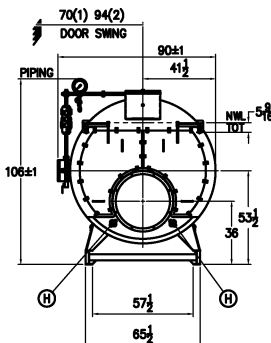
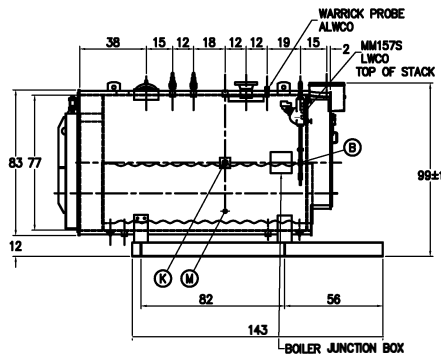


WATER LEVEL SEQUENCE



BOILER CONNECTIONS		RATINGS & CAPACITIES		LTR	DATE	REVISION	BY	REPRESENTATIVE
A.(1) STEAM OUTLET	6" 300# FLANGE	HORSEPOWER	250*					?
B.(4) LWCO	1" NPT	DESIGN PRESSURE	150 PSI STEAM					
C.(2) SAFETY VALVE	2" NPT	GROSS OUTPUT	8369 MBH*					
D.( ) SAFETY VALVE		STEAM (FROM & AT 212°F)	8625 Lb/Hr*					
E.(2) BOILER BLOWDOWN	1 1/4" NPT	HEAT RELEASE: (FURNACE ONLY)	188506 Btu/DaFt*					PROJECT:
F.(1) SURFACE BLOWDOWN	1" NPT	RATED INPUT	10,481 MBH*					?
G.(1) MANWAY	12" x 16"	HEATING SURFACE (ASME)	1274 SqFt					
H.(4) HANDHOLE	3" x 4"	FURNACE HEATING SURFACE	89.62 SqFt					
J.(1) CLEANOUT	17" ID	FURNACE VOLUME:						
K.(2) FEEDWATER	2" NPT	FURNACE ONLY	55.49 CuFt					
L.(1) AUXILIARY/VENT	2" NPT	STEAMING VOLUME	27.50 CuFt					
M.(1) LOW FIRE HOLD	1" NPT	STEAM RELEASE AREA	43.33 SqFt					
N.(1) STACK TEMP	1/2" NPT	WATER CAPACITY:						
P.(1) SIGHTPORT	1" NPT	(FULL)	1,406 Gal @ 11,696 Lbs					
Q.( )		(NWL)	1,200 Gal @ 9,985 Lbs					
R.( )		SHIPPING WEIGHT:	19,200 Lbs					
S.( )								

NOTES		SUPERIOR BOILER		CHECKED BY	DATE
1. ALL CONTROLS MOUNTED AS PER SPECIFICATION SHEET.		APACHE		DRAWN BY	DATE
2. SPECIFICATION SHEET TAKES PRIORITY OVER R & D SHEET.				?	
3. REAR DOOR SWING:		BOILER MODEL			
(1) MIN SIDE, MAX REAR		8-5-1250-S150-			
(2) MAX SIDE, MIN REAR		DRAWING No			
4. BOILER DESIGN CODE ASME SECTION		1/50			
5. BOILER INSULATED WITH 2"-8# DENSITY MINERAL FIBER INSULATION WITH 22 GAUGE STEEL JACKET.					
6. ALL DIMENSIONS ARE ±1/2" UNLESS OTHERWISE NOTED.					
*7. HORSEPOWER & RELATED INFO BASED ON 5 SqFt FIRING.					

THIS DRAWING IS THE PROPERTY OF SUPERIOR BOILER WORKS & SHALL NOT BE REPRODUCED IN PART OR IN WHOLE, & NONE OF ITS INFORMATION SHALL BE REVEALED WITHOUT PERMISSION OR TO THE DETRIMENT OF THE OWNER. IT MUST BE RETURNED UPON REQUEST.	
---	--