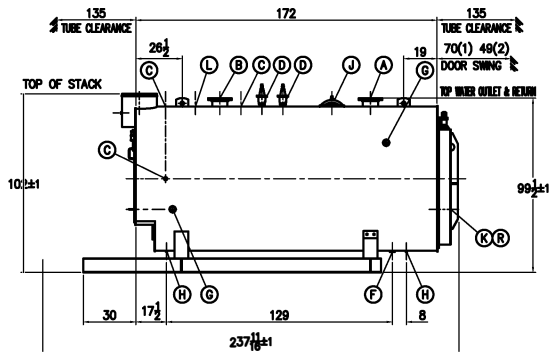
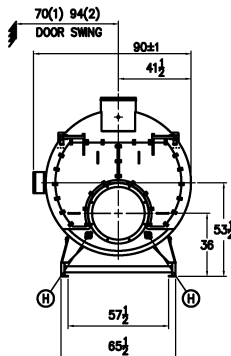


STACK DETAIL



### BOILER CONNECTIONS

A.(1) WATER OUTLET	8" 150# FLANGE
B.(1) WATER RETURN	8" 150# FLANGE
C.(4) LWCO	1" NPT
D.(2) SAFETY VALVE	2" NPT
E.( ) SAFETY VALVE	
F.(1) BOILER DRAIN	2" NPT
G.(4) WATER CIRCULATION	2 1/2" NPT
H.(4) HANDHOLE	3" x 4"
J.(1) MAINWAY	12" x 16"
K.(1) CLEANOUT	17" ID
L.(1) AIR VENT	2" NPT
M.(1) LOW FIRE HOLD	1" NPT
N.(4) AQUASTAT	1/2" NPT
P(1) AQUASTAT	3/4" NPT
Q.(1) STACK TEMP	1/2" NPT
R.(1) SIGHT PORT	1" PIPE
S.( )	

### RATINGS & CAPACITIES

HORSEPOWER	300*
DESIGN PRESSURE	30 PSI WATER
DESIGN TEMPERATURE	250°F
GROSS OUTPUT	10,042 MBH*
HEAT RELEASE: (FURNACE ONLY)	177,283 Btu/CuFt*
RATED INPUT	12,653 MBH*
HEATING SURFACE (ASME)	1,504 SqFt
FURNACE HEATING SURFACE	103.24 SqFt
FURNACE VOLUME:	
FURNACE ONLY	70.81 CuFt
WATER CAPACITY:	
(FULL)	1.782 Gal @ 14,652 Lbs
SHIPPING WEIGHT:	23,500 Lbs

LTR	DATE	REVISION

### NOTES

- ALL CONTROLS MOUNTED AS PER SPECIFICATION SHEET.
- SPECIFICATION SHEET TAKES PRIORITY OVER R & D SHEET.
- REAR DOOR SWING:
  - MIN SIDE, MAX REAR
  - MAX SIDE, MIN REAR
- BOILER DESIGN CODE ASME SECTION IV.
- BOILER INSULATED WITH 2" - 8# DENSITY MINERAL FIBER INSULATION WITH 22 GAUGE STEEL JACKET.
- ALL DIMENSIONS ARE ±1/2" UNLESS OTHERWISE NOTED.
- \*7. HORSEPOWER & RELATED INFO BASED ON 5 SqFt FIRING.



CHECKED BY  
X  
DRAWN BY  
X

APACHE BOILER MODEL  
8-5-1500-W30-

SCALE

1/50

DRAWING No

X

DATE  
DATE

THIS DRAWING IS THE PROPERTY OF SUPERIOR BOILER WORKS & SHALL NOT BE REPRODUCED IN PART OR IN WHOLE, & NONE OF ITS INFORMATION SHALL BE REVEALED WITHOUT PERMISSION OR TO THE DETRIMENT OF THE OWNER. IT MUST BE RETURNED UPON REQUEST.