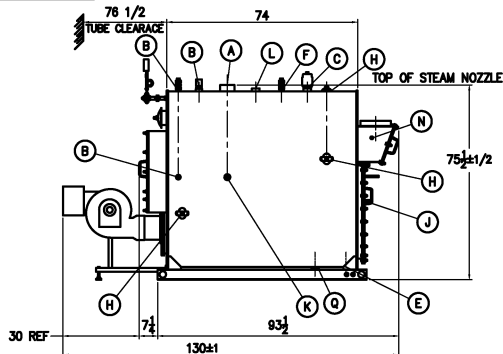


WATER LEVEL SEQUENCE



# BOILER CONNECTIONS

# RATINGS & CAPACITIES

LTR DATE

REVISION

BY

REPRESENTATIVE

A.(1) STEAM OUTLET	4" NPT
B.(4) LWCO	1" NPT
C.(1) SAFETY VALVE	2" NPT
D.( ) SAFETY VALVE	
E.(1) BOILER BLOWDOWN	1 1/4" NPT
F.(1) SURFACE BLOWDOWN	1" NPT
G.(1) HANDHOLE	4" x 6"
H.(5) HANDHOLE	3" x 4"
J.(1) SIGHTPORT	1 1/4" PIPE
K.(2) FEEDWATER	1" NPT
L.(1) AUXILIARY	2" NPT
M.( ) LOW FIRE HOLD	
N.(2) STACK TEMP	1/2" NPT
P.(1) PRESSURE RETROL	3/4" NPT
Q.(1) CLEANOUT	2" NPT
R.( )	
S.( )	

HORSEPOWER	80
DESIGN PRESSURE	15 PSIG STEAM
GROSS OUTPUT	2009 MBH
STEAM (FROM & AT 212°F)	2070 Lbs/Hr
HEAT RELEASE: (FURNACE ONLY)	218846 BTU/CuFt
RATED INPUT	2511 MBH
HEATING SURFACE (ASME)	245 SqFt
FURNACE HEATING SURFACE	31.70 SqFt
FURNACE VOLUME	14.34 CuFt
TURNAROUND VOLUME	4.44 CuFt
STEAMING VOLUME	11.80 CuFt
STEAM RELEASE AREA	15.38 SqFt
WATER CAPACITY:	
(FULL)	351 Gals @ 2,919 Lbs
(NWL)	283 Gals @ 2,185 Lbs
SHIPPING WEIGHT:	5,200 Lbs

# NOTES

1. ALL CONTROLS MOUNTED AS PER SPECIFICATION SHEET.
2. SPECIFICATION SHEET TAKES PRIORITY OVER R & D SHEET.
3. BOILER DESIGN CODE ASME SECTION IV.
4. BOILER INSULATED WITH 1" OF INSULATION AND JACKETED WITH 22 GAUGE STEEL.
5. ALL DIMENSIONS ARE ±1/2" UNLESS OTHERWISE NOTED.
- \*6. HORSEPOWER & RELATED INFO BASED ON 4 SqFt FIRING.



CHECKED BY

DATE

DRAWN BY

DATE

ARROWHEAD

BOILER MODEL

AR-4-240-S15-

SCALE

DRAWING No

1/34

?

THIS DRAWING IS THE PROPERTY OF SUPERIOR BOILER WORKS & SHALL NOT BE REPRODUCED IN PART OR IN WHOLE, & NONE OF ITS INFORMATION SHALL BE REVEALED WITHOUT PERMISSION OR TO THE DETRIMENT OF THE OWNER. IT MUST BE RETURNED UPON REQUEST.