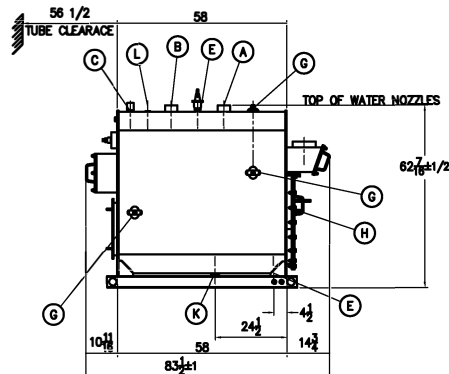


STACK DETAIL



BOILER CONNECTIONS

RATINGS & CAPACITIES

LTR DATE

REVISION

BY REPRESENTATIVE

A.(1) WATER OUTLET	3" NPT
B.(1) WATER RETURN	3" NPT
C.(1) LWCO	1" NPT
D.(1) SAFETY VALVE	1" NPT
E.(1) BOILER DRAIN	1 1/2" NPT
F.(1) HANDHOLE	4" x 6"
G.(5) HANDHOLE	3" x 4"
H.(1) SIGHTPORT	1 1/4" PIPE
J.(1) AIR VENT	1" NPT
K.(1) CLEANOUT	2" NPT
L.(1) LOW FIRE HOLD	1" NPT
M.(5) AQUASTAT	3/4" NPT
N.(1) STACK TEMP	1/2" NPT
P.()	
Q.()	
R.()	
S.()	

HORSEPOWER	20
DESIGN PRESSURE	30 PSIG WATER
DESIGN TEMPERATURE	250 F
GROSS OUTPUT	670 Lbs/hr
HEAT RELEASE (FURNACE ONLY)	136,000 BTU/CuFt
RATED INPUT	836 MBH
HEATING SURFACE (ASME)	83 SqFt
FURNACE HEATING SURFACE	17.11 SqFt
FURNACE VOLUME	6.15 CuFt
TURNAROUND VOLUME	3.36 CuFt
WATER CAPACITY:	
(FULL)	242 Gals @ 2,009 Lbs
SHIPPING WEIGHT:	4,000

NOTES

1. ALL CONTROLS MOUNTED AS PER SPECIFICATION SHEET.
2. SPECIFICATION SHEET TAKES PRIORITY OVER R & D SHEET.
3. BOILER DESIGN CODE ASME SECTION IV
4. BOILER INSULATED WITH 1"-6# DENSITY CERAMIC FIBER INSULATION WITH 22 GAUGE STEEL JACKET.
5. ALL DIMENSIONS ARE ±1/2" UNLESS OTHERWISE NOTED.
- *6. HORSEPOWER & RELATED INFO BASED ON 4 SqFt FIRING.

SUPERIOR
BOILER WORKS, INC.
MOTORCITY, KANSAS

ARROWHEAD

CHECKED BY
DATE
DRAWN BY
BOILER MODEL
AR-X-80-S15-M

SCALE

1/30

DRAWING No

?

THIS DRAWING IS THE PROPERTY OF SUPERIOR BOILER WORKS & SHALL NOT BE REPRODUCED IN PART OR IN WHOLE, & NONE OF ITS INFORMATION SHALL BE REVEALED WITHOUT PERMISSION OR TO THE DETRIMENT OF THE OWNER. IT MUST BE RETURNED UPON REQUEST.