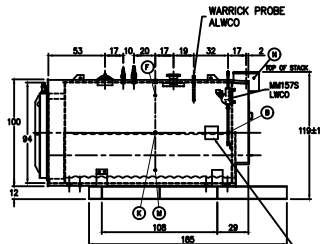
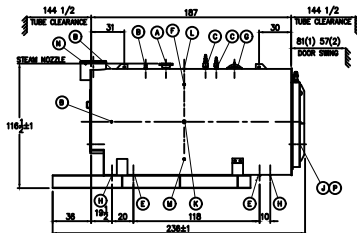
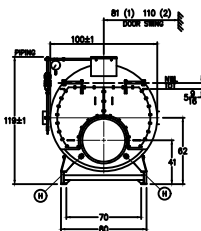


WATER LEVEL SEQUENCE



BOILER JUNCTION BOX



# BOILER CONNECTIONS

# RATINGS & CAPACITIES

LTR DATE

REVISION

BY

REPRESENTATIVE:

A.(1) STEAM OUTLET	6" 300# FLANGE
B.(4) LWCO	1" NPT
C.(2) SAFETY VALVE	2" NPT
D.( ) SAFETY VALVE	
E.(2) BOILER BLOWDOWN	1 1/2" NPT
F.(2) SURFACE BLOWDOWN	1" NPT
G.(1) MANWAY	12" x 16"
H.(4) HANDHOLE	3" x 4"
J.(1) CLEANOUT PORT	17" ID
K.(2) FEEDWATER	2" NPT
L.(1) AUXILIARY/VENT	2" NPT
M.(2) LOW FIRE HOLD	1/2" NPT
N.(2) STACK TEMP	1/2" NPT
P.(1) SIGHT PORT	1" PIPE
Q.( )	
R.( )	
S.( )	

HORSEPOWER	400*
DESIGN PRESSURE	150 PSIG STEAM
GROSS OUTPUT	13390 MBH*
STEAM (FROM & AT 212°F)	13800 LB/HR*
HEAT RELEASE: (FURNACE ONLY)	147,582 BTU/CuFt*
RATED INPUT	16738 MBH*
HEATING SURFACE (ASME)	2031 SqFt
FURNACE HEATING SURFACE	149.08 SqFt
FURNACE VOLUME:	
FURNACE ONLY	113.41 CuFt
STEAMING VOLUME	60.79 CuFt
STEAM RELEASE AREA	73.20 SqFt
WATER CAPACITY:	
(FULL)	3,008 GAL ● 25,001 LBS
(NWL)	2,551 GAL ● 21,218 LBS
SHIPPING WEIGHT:	33,800 LBS

- NOTES
1. ALL CONTROLS MOUNTED AS PER SPECIFICATION SHEET.
  2. SPECIFICATION SHEET TAKES PRIORITY OVER R & D SHEET.
  3. REAR DOOR SWING:
    - (1) MIN SIDE, MAX REAR
    - (2) MAX SIDE, MIN REAR
  4. BOILER DESIGN CODE ASME SECTION I
  5. BOILER INSULATED WITH 2" - 8# DENSITY MINERAL FIBER INSULATION WITH 22 GAUGE STEEL JACKET.
  6. ALL DIMENSIONS ARE ±1/2" UNLESS OTHERWISE NOTED.
  - \*7. HORSEPOWER & RELATED INFO BASED ON 5 SqFt FIRING.



AZTEC BOILER MODEL  
5-X-2007-S150-

SCALE

1/70

CHECKED BY

DRAWN BY

?

DATE

DATE

?

THIS DRAWING IS THE PROPERTY OF SUPERIOR BOILER WORKS & SHALL NOT BE REPRODUCED IN PART OR IN WHOLE, & NONE OF ITS INFORMATION SHALL BE REVEALED WITHOUT PERMISSION OR TO THE DETRIMENT OF THE OWNER. IT MUST BE RETURNED UPON REQUEST.