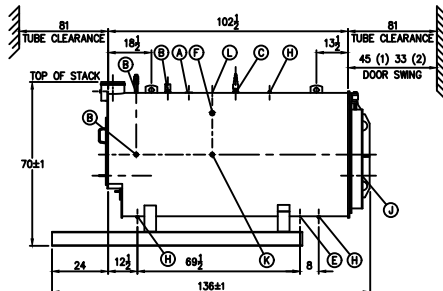
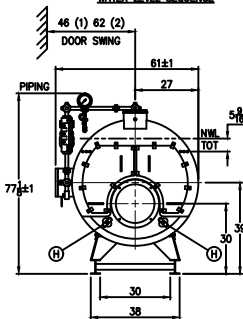


WATER LEVEL SEQUENCE



STACK DETAIL



BOILER CONNECTIONS

RATINGS & CAPACITIES

LTR DATE

REVISION

BY

REPRESENTATIVE:

A.(1) STEAM OUTLET	2" NPT	HORSEPOWER	40*
B.(4) LWCO	1" NPT	DESIGN PRESSURE	150 P.S.I.G. STEAM
C.(1) SAFETY VALVE	1 1/2" NPT	GROSS OUTPUT	1,339 MBH*
D.() SAFETY VALVE		STEAM (FROM & AT 212°F)	1,380 Lb/Hr*
E.(1) BOILER BLOWDOWN	1" NPT	HEAT RELEASE: (FURNACE ONLY)	144,112 BTU/CuFt*
F.(1) SURFACE BLOWDOWN	1" NPT	RATED INPUT	1,674 MBH*
G.() MANWAY		HEATING SURFACE (ASME)	209 SqFt
H.(5) HANDHOLE	3" x 4"	FURNACE HEATING SURFACE	32.08 SqFt
J.(1) SIGHTPORT	1" PIPE	FURNACE VOLUME:	
K.(2) FEEDWATER	1" NPT	FURNACE ONLY	11.61 CuFt
L.(1) AUXILIARY	1 1/2" NPT	STEAMING VOLUME	5.21 CuFt
M.() LOW FIRE HOLD		STEAM RELEASE AREA	17.65 SqFt
N.(1) STACK TEMP	1/2" NPT	WATER CAPACITY:	
P.()		(FULL)	505 GAL • 4,201 LBS
Q.()		(NWL)	466 GAL • 3,877 LBS
R.()		SHIPPING WEIGHT:	5,800 LBS
S.()			

NOTES

1. ALL CONTROLS MOUNTED AS PER SPECIFICATION SHEET.
2. SPECIFICATION SHEET TAKES PRIORITY OVER R & D SHEET.
3. REAR DOOR SWING:
 - (1) MIN SIDE, MAX REAR
 - (2) MAX SIDE, MIN REAR
4. BOILER DESIGN CODE ASME SECTION I.
5. BOILER INSULATED WITH 2" - 8# DENSITY MINERAL FIBER INSULATION WITH 22 GAUGE STEEL JACKET.
6. ALL DIMENSIONS ARE ±1/2" UNLESS OTHERWISE NOTED.
- *7. HORSEPOWER & RELATED INFO BASED ON 5 SqFt FIRING.

SUPERIOR BOILER

CHECKED BY

DATE

DRAWN BY

DATE

AZTEC

BOILER MODEL

5-X-205-S150-

SCALE

DRAWING No

1/32

X

THIS DRAWING IS THE PROPERTY OF SUPERIOR BOILER WORKS & SHALL NOT BE REPRODUCED IN PART OR IN WHOLE, & NONE OF ITS INFORMATION SHALL BE REVEALED WITHOUT PERMISSION OR TO THE DETRIMENT OF THE OWNER. IT MUST BE RETURNED UPON REQUEST.