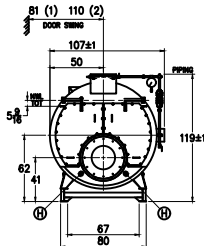
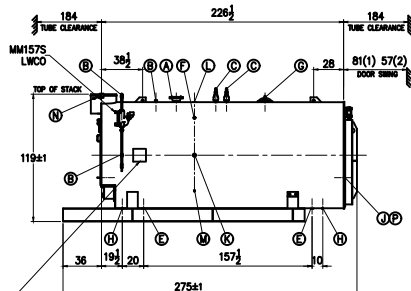


BOILER JUNCTION BOX



BOILER JUNCTION BOX



BOILER CONNECTIONS

RATINGS & CAPACITIES

LTR

DATE

REVISION

BY

REPRESENTATIVE:

A.(1) STEAM OUTLET 8" 300# FLANGE

B.(4) LWCO 1" NPT

C.(2) SAFETY VALVE 2" NPT

D.() SAFETY VALVE

E.(2) BOILER BLOWDOWN 1 1/2" NPT

F.(2) SURFACE BLOWDOWN 1" NPT

G.(1) MANWAY 12" x 16"

H.(4) HANDHOLE 3" x 4"

J.(1) CLEANOUT PORT 17" ID

K.(2) FEEDWATER 2" NPT

L.(1) AUXILIARY/VENT 2" NPT

M.(2) LOW FIRE HOLD 1" NPT

N.(2) STACK TEMP 1/2" NPT

P.(1) SIGHT PORT 1" NPT

Q.()

R.()

S.()

HORSEPOWER 500

DESIGN PRESSURE 150 PSIG STEAM

GROSS OUTPUT 16738 MBH

STEAM (FROM & AT 212°F) 17250 LB/HR

HEAT RELEASE: (FURNACE ONLY) 148772 BTU/CuFt

RATED INPUT 20922 MBH

HEATING SURFACE (ASME) 2523 SqFt

FURNACE HEATING SURFACE 185.39 SqFt

FURNACE VOLUME:

FURNACE ONLY 140.63 CuFt

STEAMING VOLUME 78.23 CuFt

STEAM RELEASE AREA 91.79 SqFt

WATER CAPACITY:

(FULL) 3,789 Gal @ 31,351 Lbs

(NWL) 3,199 Gal @ 26,608 Lbs

SHIPPING WEIGHT: 37,500 Lbs

NOTES

1. ALL CONTROLS MOUNTED AS PER SPECIFICATION SHEET.
2. SPECIFICATION SHEET TAKES PRIORITY OVER R & D SHEET.
3. REAR DOOR SWING:
(1) MIN SIDE, MAX REAR
(2) MAX SIDE, MIN REAR
4. BOILER DESIGN CODE ASME SECTION I
5. BOILER INSULATED WITH 2"-8# DENSITY MINERAL FIBER INSULATION WITH 22 GAUGE STEEL JACKET.
6. ALL DIMENSIONS ARE ±1/2" UNLESS OTHERWISE NOTED.
- *7. HORSEPOWER & RELATED INFO BASED ON 5 SqFt FIRING.

SUPERIOR
BOILER

CHECKED BY

DRAWN BY

X

DATE

DATE

AZTEC

BOILER MODEL

5-X-2506-S150-M

SCALE

DRAWING No

1/70

X

THIS DRAWING IS THE PROPERTY OF SUPERIOR BOILER WORKS & SHALL NOT BE REPRODUCED IN PART OR IN WHOLE, & NONE OF ITS INFORMATION SHALL BE REVEALED WITHOUT PERMISSION OR TO THE DETRIMENT OF THE OWNER. IT MUST BE RETURNED UPON REQUEST.