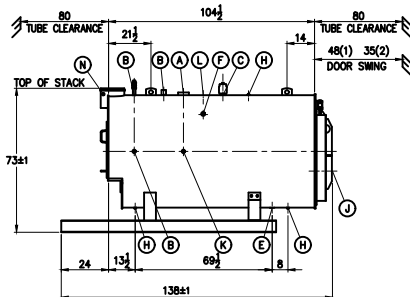
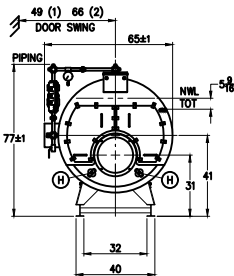
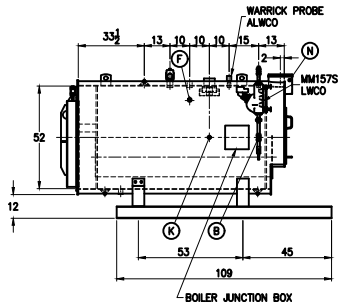





### STACK\_DETAIL



BOILER CONNECTIONS		RATINGS & CAPACITIES		LTR		DATE		REVISION		BY		REPRESENTATIVE:	
A.(1) STEAM OUTLET	4" NPT	HORSEPOWER	50										?
B.(4) LWCO	1" NPT	DESIGN PRESSURE	15 PSIG STEAM										
C.(1) SAFETY VALVE	2" NPT	GROSS OUTPUT	1674 MBH										
D.( ) SAFETY VALVE		STEAM (FROM & AT 212°F)	1725 Lb/Hr										
E.(1) BOILER BLOWDOWN	1 1/4" NPT	HEAT RELEASE: (FURNACE ONLY)	144653 BTU/CuFt									PROJECT:	?
F.(2) SURFACE BLOWDOWN	1" NPT	RATED INPUT	2092 MBH										
G.( ) MANWAY		HEATING SURFACE (ASME)	256 SqFt										
H.(5) HANDHOLE	3" x 4"	FURNACE HEATING SURFACE	34.96 SqFt										
J.(1) SIGHTPORT	1" PIPE	FURNACE VOLUME:		NOTES						CHECKED BY _____ DATE _____		THIS DRAWING IS THE PROPERTY OF SUPERIOR BOILER WORKS & SHALL NOT BE REPRODUCED IN PART OR IN WHOLE, & NONE OF ITS INFORMATION SHALL BE REVEALED WITHOUT PERMISSION OR TO THE DETRIMENT OF THE OWNER. IT MUST BE RETURNED UPON REQUEST.	
K.(2) FEEDWATER	1" NPT	FURNACE ONLY	14.46 CuFt										
L.(1) AUXILIARY/VENT	1 1/2" NPT	STEAMING VOLUME	8.75 CuFt	1. ALL CONTROLS MOUNTED AS PER SPECIFICATION SHEET. 2. SPECIFICATION SHEET TAKES PRIORITY OVER R & D SHEET. 3. REAR DOOR SWING: (1) MIN SIDE, MAX REAR (2) MAX SIDE, MIN REAR 4. BOILER DESIGN CODE: ASME SECTION IV 5. BOILER INSULATED WITH 2" - 84 DENSITY MINERAL FIBER INSULATION WITH 22 GAUGE STEEL JACKET. 6. ALL DIMENSIONS ARE ±1/2" UNLESS OTHERWISE NOTED. *7. HORSEPOWER & RELATED INFO BASED ON 5 SqFt FIRING.				AZTEC BOILER MODEL 5-5-253-S15-		DRAWING No ?			
M.( ) LOW FIRE HOLD		STEAM RELEASE AREA	21.25 SqFt										
N.(2) STACK TEMP	1/2" NPT	WATER CAPACITY:		SCALE 1/38									
P.( )		(FULL) 581 Gal @ 4,831 Lbs											
Q.( )		(NWL) 515 Gal @ 4,287 Lbs											
R.( )		SHIPPING WEIGHT: 6,500 Lbs											
S.( )													