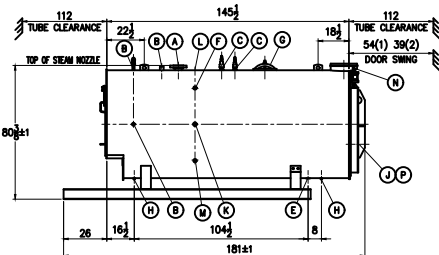
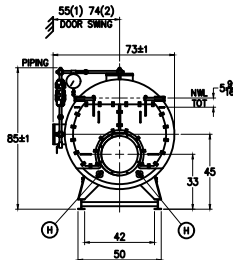
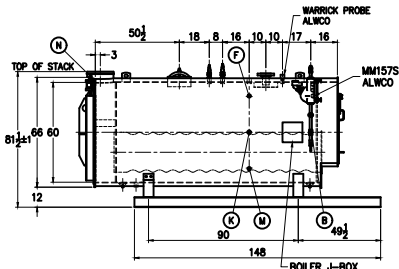


STACK DETAIL



BOILER CONNECTIONS

RATINGS & CAPACITIES

LTR DATE

REVISION

BY REPRESENTATIVE:

?

PROJECT:

?

NOTES

- ALL CONTROLS MOUNTED AS PER SPECIFICATION SHEET.
- SPECIFICATION SHEET TAKES PRIORITY OVER R & D SHEET.
- REAR DOOR SWING:
(1) MIN SIDE, MAX REAR
(2) MAX SIDE, MIN REAR
- BOILER DESIGN CODE ASME SECTION I
- BOILER INSULATED WITH 2"-8# DENSITY MINERAL FIBER INSULATION WITH 22 GAUGE STEEL JACKET.
- ALL DIMENSIONS ARE ± 1/2" UNLESS OTHERWISE NOTED.
- HORSEPOWER & RELATED INFO BASED ON 5 SqFt FIRING.

SUPERIOR
BOILER

MOHAWK

BOILER MODEL

4-X-508-S150

SCALE

1/45

CHECKED BY

DRAWN BY

?

DATE

DATE

DRAWING No

?

THIS DRAWING IS THE PROPERTY OF SUPERIOR BOILER WORKS & SHALL NOT BE REPRODUCED IN PART OR IN WHOLE, & NONE OF ITS INFORMATION SHALL BE REVEALED WITHOUT PERMISSION OR TO THE DETRIMENT OF THE OWNER. IT MUST BE RETURNED UPON REQUEST.

A.(1) STEAM OUTLET	4" 300# FLANGE
B.(4) LWCO	1" NPT
C.(2) SAFETY VALVE	1 1/2" NPT
D.() SAFETY VALVE	
E.(1) BOILER BLOWDOWN	1 1/4" NPT
F.(2) SURFACE BLOWDOWN	1" NPT
G.(1) MANWAY	12" X 16"
H.(4) HANDHOLE	3" X 4"
J.(1) CLEANOUT	17" ID
K.(2) FEEDWATER	1 1/4" NPT
L.(1) AUXILIARY/VENT	1 1/2" NPT
M.(2) LOW FIRE HOLD	1" NPT
N.(2) STACK TEMP	1/2" NPT
P.(1) SIGHTPORT	1" PIPE
Q.()	
R.()	
S.()	

HORSEPOWER	100*
DESIGN PRESSURE	150 PSIG STEAM
GROSS OUTPUT	3348 MBH*
STEAM (FROM & AT 212°F)	3450 Lb/Hr*
HEAT RELEASE: (FURNACE ONLY)	148466 BTU/Hr/CuFt*
RATED INPUT	4184 MBH*
HEATING SURFACE (ASME)	519 SqFt
FURNACE HEATING SURFACE	65.13 SqFt
FURNACE VOLUME:	
FURNACE ONLY	28.18 CuFt
STEAMING VOLUME	16.10 CuFt
STEAM RELEASE AREA	34.33 SqFt
WATER CAPACITY:	
	1,062 GAL @ 8,833 Lbs
	942 GAL @ 7,831 Lbs
SHIPPING WEIGHT:	10,700 Lbs