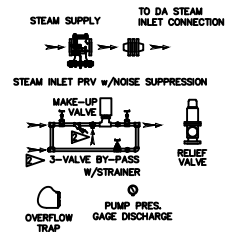


ITEMS TO SHIP LOOSE



DEAERATOR TANK CONNECTIONS

A. (3) PUMP SUCTION	3 FLG. IN.
B. (1) WATER INLET	2 1/2 IN.
C. (1) STEAM INLET	8 FLG. IN.
D. (1) LOW TEMP. RETURN	2 1/2 IN.
E. (1) MED TEMP RETURN	1 1/2 IN.
F. (1) HI TEMP RETURN	1 1/2 IN.
G. (1) DRAIN	2 IN.
H. (1) MANUAL VENT	3/4 IN.
J. (1) VENT CONDENSER	8 FLG. IN.
K. (1) OVERFLOW	2 IN.
L. (1) THERMOMETER	1 IN.
M. (1) RECIRCULATION	2 IN.
N. (1) CHEMICAL FEED	1 IN.
P. (1) MANWAY	12 X 16 IN.
Q. (2) LEVEL CONTROLS	1 IN.
R. (2) LEVEL ALARMS	1 IN.
S. (1) RELIEF VALVE	2 1/2 IN.
T. (1) VACUUM BREAKER	2 IN.

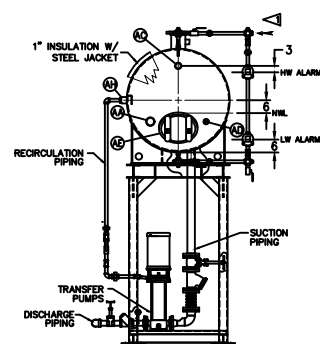
CONNECTIONS NPT UNLESS NOTED, FLANGES 150# UNLESS NOTED

SURGE TANK CONNECTIONS

X. (2) PUMP SUCTION	3 FLG. IN.
Y. (1) WATER INLET	2 IN.
Z. (1) LOW PRESS. RETURN	2 IN.
AA. (1) HI TEMP RETURN	3 IN.
AB. (1) DRAIN	2 IN.
AC. (1) OVERFLOW	2 IN.
AD. (1) CHEMICAL FEED	1 IN.
AE. (1) MANWAY	12 X 16 IN.
AF. (2) LEVEL CONTROLS	1 IN.
AG. (2) LEVEL ALARMS	1 IN.
AH. (1) RECIRCULATION	2 1/2 IN.
AJ. (1) THERMOMETER	1 IN.
AK. (1) VENT	3 IN.
AH. (2) COND. VENT	1 IN.

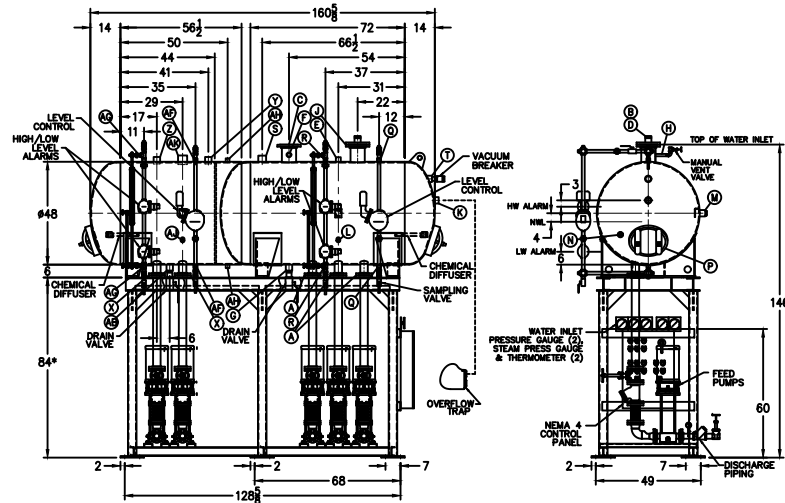
CONNECTIONS NPT UNLESS NOTED, FLANGES 150# UNLESS NOTED

FIELD CONNECT
STEAM SECTION PRESSURE GAUGE
WATER IN-LET PRESSURE GAUGE
FIELD PLUMB
WATER IN-LET PRESSURE GAUGE
(COMPONENTS NOT SUPPLIED)



- (D) LOW TEMP. RETURN
(<180 °F)
- (E) MEDIUM TEMP. RETURN
(180-227 °F)
- (F) HIGH TEMP. RETURN
(>227 °F)

* STAND HEIGHT SUBJECT TO PUMP NPSH REQUIREMENTS
ALL COMPONENTS CONTINGENT UPON FINAL ENGINEERING.
PANEL SIZE MAY VARY DEPENDING ON JOB REQUIREMENTS



LTR.	DATE	REVISIONS	BY
A	12-26-13	DESCRIPTION	

NOTES
1. ALL CONTROLS MOUNTED AS PER SPECIFICATION SHEET.
2. SPECIFICATION SHEET TAKES PRIORITY OVER DRAWING.
3. ALL DIMENSIONS ARE ±1\"/>

THIS DRAWING IS THE PROPERTY OF SUPERIOR BOILER WORKS AND SHALL NOT BE REPRODUCED IN PART OR IN WHOLE, AND NONE OF ITS INFORMATION SHALL BE REVEALED WITHOUT PERMISSION OR TO THE DETRIMENT OF THE OWNER, IT MUST BE RETURNED UPON REQUEST.

SOLO TO: SBW

JOB: SBW

DRAWN BY: D. RIDDER DATE: 6-28-14 CHECKED BY: DATE:

DRAWING NAME: DEAERATOR, SPRAY

MODEL NO: SSD014

SIZE: 430 GALLONS

SCALE: 1/40

DRAWING No: 15070XXX

SUPERIOR BOILER WORKS, INC. HUTCHINSON, KANSAS