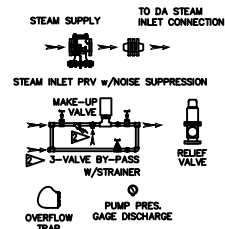


# ITEMS TO SHIP LOOSE



## DEAERATOR TANK CONNECTIONS

A. (3) PUMP SUCTION	3 FLG. IN.
B. (1) WATER INLET	2 1/2 IN.
C. (1) STEAM INLET	8 FLG. IN.
D. (1) LOW TEMP. RETURN	2 1/2 IN.
E. (1) MED TEMP RETURN	1 1/2 IN.
F. (1) HI TEMP RETURN	1 1/2 IN.
G. (1) DRAIN	2 1/2 IN.
H. (1) MANUAL VENT	3/4 IN.
J. (1) VENT CONDENSER	6 FLG. IN.
K. (1) OVERFLOW	2 IN.
L. (1) THERMOMETER	1 IN.
M. (1) RECIRCULATION	2 IN.
N. (1) CHEMICAL FEED	1 IN.
P. (1) MANWAY	12 X 16 IN.
Q. (2) LEVEL CONTROLS	1 IN.
R. (2) LEVEL ALARMS	1 IN.
S. (1) RELIEF VALVE	2 1/2 IN.
T. (1) VACUUM BREAKER	2 IN.

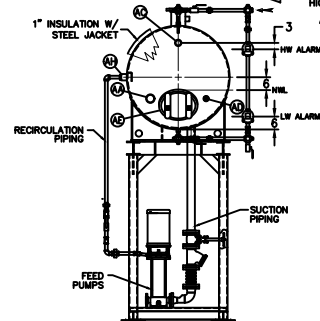
CONNECTIONS NPT UNLESS NOTED, FLANGES 150# UNLESS NOTED

## SURGE TANK CONNECTIONS

X. (2) PUMP SUCTION	3 FLG. IN.
Y. (1) WATER INLET	2 IN.
Z. (1) LOW PRESS. RETURN	2 IN.
AA. (1) HI TEMP RETURN	3 IN.
AB. (1) DRAIN	2 IN.
AC. (1) OVERFLOW	2 IN.
AD. (1) CHEMICAL FEED	1 IN.
AE. (1) MANWAY	12 X 16 IN.
AF. (2) LEVEL CONTROLS	1 IN.
AG. (2) LEVEL ALARMS	1 IN.
AH. (1) RECIRCULATION	2 IN.
AI. (1) THERMOMETER	1 IN.
AJ. (1) VENT	3 IN.
AH. (2) COND. VENT	1 IN.

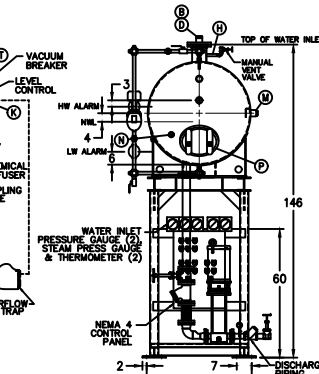
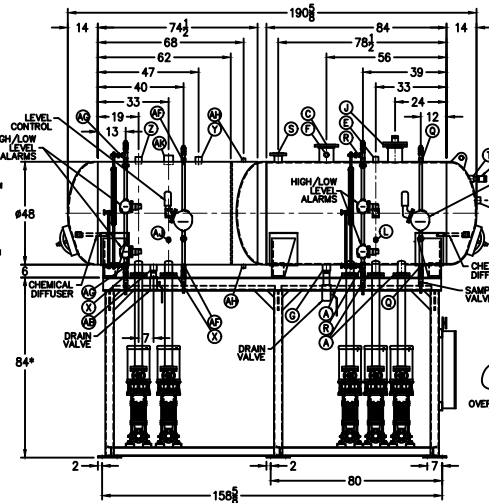
CONNECTIONS NPT UNLESS NOTED, FLANGES 150# UNLESS NOTED

FIELD CONNECT  
STEAM SECTION PRESSURE GAUGE  
WATER IN-LET PRESSURE GAUGE  
FIELD PLUMB  
WATER IN-LET PRESSURE GAUGE  
(COMPONENTS NOT SUPPLIED)



- (D) LOW TEMP. RETURN (<180 °F)
- (E) MEDIUM TEMP. RETURN (180-227 °F)
- (F) HIGH TEMP. RETURN (>227 °F)

\* STAND HEIGHT SUBJECT TO PUMP NPSH REQUIREMENTS  
ALL COMPONENTS CONTINGENT UPON FINAL ENGINEERING.  
PANEL SIZE MAY VARY DEPENDING ON JOB REQUIREMENTS



RATING & CAPACITIES		LTR.	DATE	REVISIONS	BY
DA TYPE	SPRAY	A	12-26-13	DESCRIPTION	
CAPACITY	24,000 LBS./HR.				
DA SECTION CAPACITY	500 GALS.				
DA STORAGE CAPACITY	10 MINUTES MIN.				
DESIGN PRESSURE	50 PSIG STEAM				
DESIGN TEMP.	400° F				
DEAERATION	.008 CC/LITER				
OPERATING PRESSURE	5 PSIG				
SURGE SECTION CAPACITY	480 GALS.				
SURGE STORAGE CAPACITY	10 MINUTES				
DRY WEIGHT.	9 LBS.				
OPERATING WEIGHT.	9 LBS.				
FLOODED WEIGHT.	9 LBS.				
THE ABOVE WEIGHTS DO NOT INCLUDE PUMPS, TRIM OR CONTROL PANEL.					
SHIPPING WEIGHT					
TANK (EMPTY)	7.777 LBS.				
STAND/PUMPS	7.777 LBS.				

- ALL CONTROLS MOUNTED AS PER SPECIFICATION SHEET.
- SPECIFICATION SHEET TAKES PRIORITY OVER DRAWING.
- ALL DIMENSIONS ARE ±1" UNLESS OTHERWISE NOTED.
- DA TANK DESIGN CODE ASME SECTION VIII DIV 1
- SEPARATE ALL LOADS FROM 3000 TO 1000 OF RATED OUTLET CAPACITY
- ELIMINATE TITRABLE FREE CARBON DIOXIDE TO 0.
- CORROSION ALLOWANCE 1/16"
- SUPERIOR BOILER WORKS, INC. RESERVES THE RIGHT TO FURNISH TRIM SHOWN OR AN EQUAL SUBSTITUTE AS DETERMINED BY SBW.

THIS DRAWING IS THE PROPERTY OF SUPERIOR BOILER WORKS AND SHALL NOT BE REPRODUCED IN PART OR IN WHOLE, AND NONE OF ITS INFORMATION SHALL BE REVEALED WITHOUT PERMISSION OR TO THE DETRIMENT OF THE OWNER, IT MUST BE RETURNED UPON REQUEST.			
SOLD TO: SBW			
JOB: SBW			
DRAWN BY: D. RIDDER	DATE: 7/5/2014	CHECKED BY:	DATE:
DRAWING NAME: DEAERATOR, SPRAY			
MODEL NO: SSD024			
SIZE: 500 GALLONS			
SUPERIOR BOILER WORKS, INC. HUTCHINSON, KANSAS		SCALE: 1/48	DRAWING No: 15070XXX