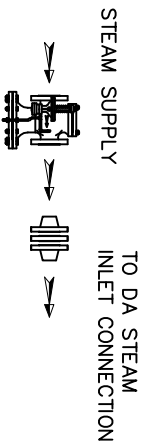
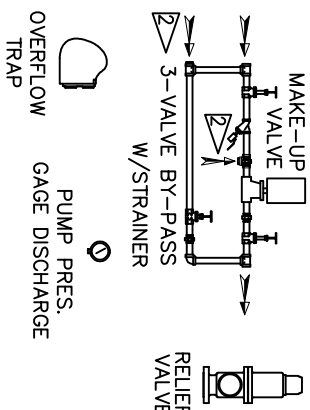


ITEMS TO SHIP LOOSE



STEAM INLET PRV w/NOISE SUPPRESSION



DEAERATOR TANK CONNECTIONS

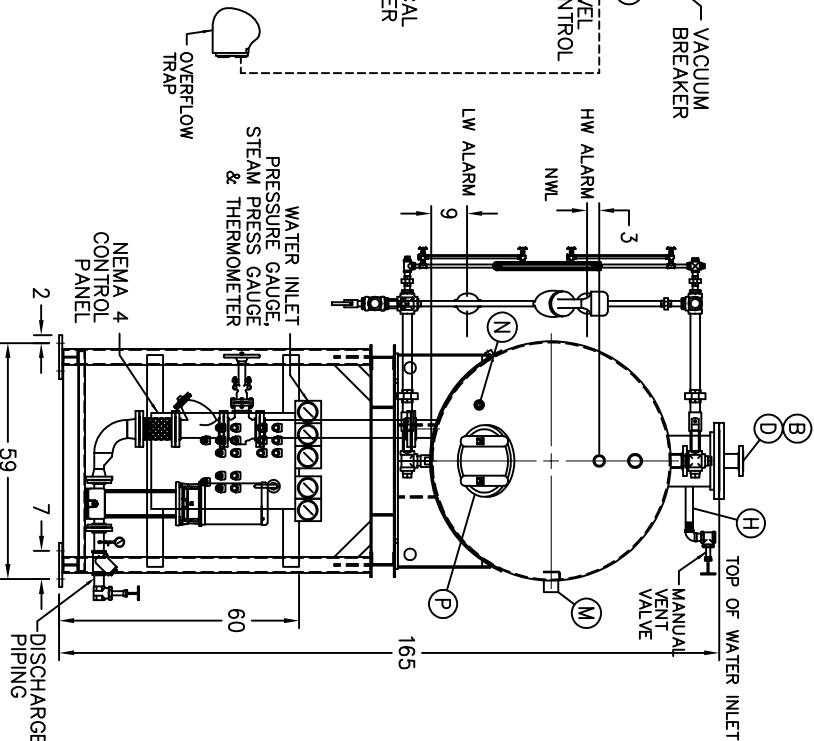
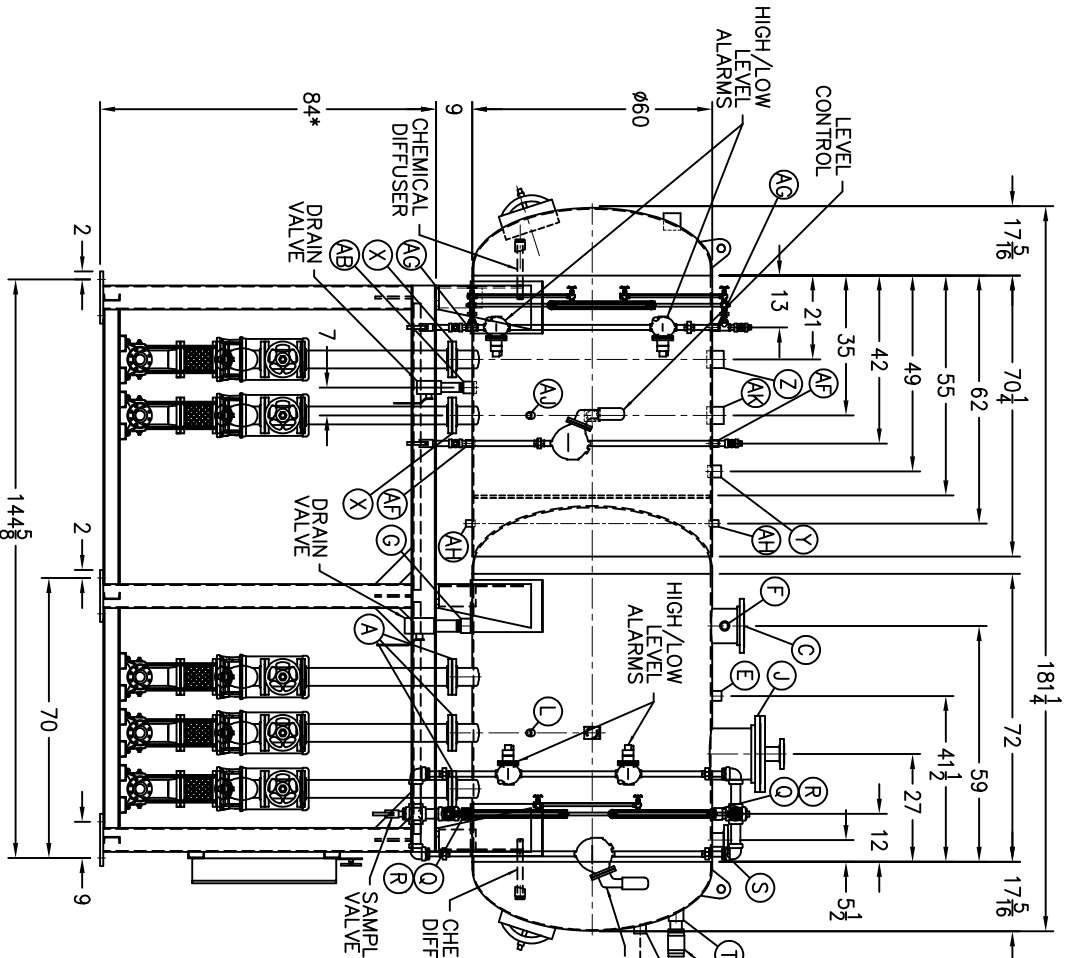
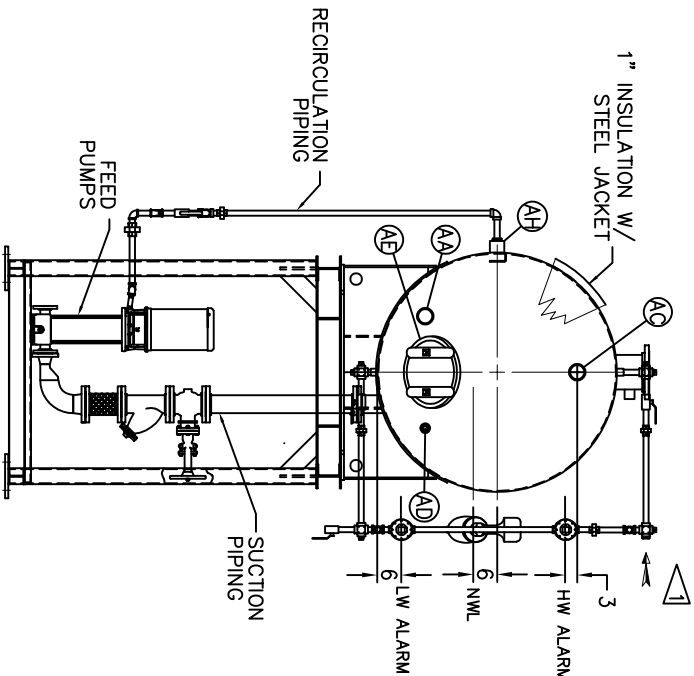
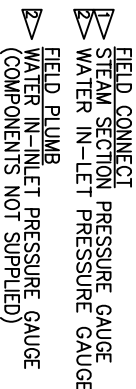
- A. (3) PUMP SUCTION 4 FLG. IN.
- B. (1) WATER INLET 3 FLG. IN.
- C. (1) STEAM INLET 8 FLG. IN.
- D. (1) LOW TEMP. RETURN 3 FLG. IN.
- E. (1) MED TEMP RETURN 1 1/2 IN.
- F. (1) HI TEMP RETURN 1 1/2 IN.
- G. (1) DRAIN 2 1/2 IN.
- H. (1) MANUAL VENT 1 1/2 IN.
- J. (1) VENT CONDENSOR 12 FLG. IN.
- K. (1) OVERFLOW 2 IN.
- L. (1) THERMOMETER 1 IN.
- M. (1) RECIRCULATION 2 1/2 IN.
- N. (1) CHEMICAL FEED 1 IN.
- P. (1) MANWAY 12 X 16 IN.
- Q. (2) LEVEL CONTROLS 2 IN.
- R. (2) LEVEL ALARMS 2 IN.
- S. (1) RELIEF VALVE 3 FLG. IN.
- T. (1) VACUUM BREAKER 2 1/2 IN.

CONNECTIONS NPT UNLESS NOTED, FLANGES 150# UNLESS NOTED

SURGE TANK CONNECTIONS

- X. (2) PUMP SUCTION 4 FLG. IN.
- Y. (1) WATER INLET 2 IN.
- Z. (1) LOW PRESS. RETURN 3 IN.
- AA. (1) HI TEMP RETURN 3 IN.
- AB. (1) DRAIN 2 IN.
- AC. (1) OVERFLOW 2 IN.
- AD. (1) CHEMICAL FEED 1 IN.
- AE. (1) MANWAY 12 X 16 IN.
- AF. (2) LEVEL CONTROLS 1 IN.
- AG. (2) LEVEL ALARMS 1 IN.
- AH. (1) RECIRCULATION 2 1/2 IN.
- AJ. (1) THERMOMETER 1 IN.
- AK. (1) VENT 3 IN.
- AH. (2) COND. VENT 1 IN.

CONNECTIONS NPT UNLESS NOTED, FLANGES 150# UNLESS NOTED



* STAND HEIGHT SUBJECT TO PUMP NPSH REQUIREMENTS
ALL COMPONENTS CONTINGENT UPON FINAL ENGINEERING
PANEL SIZE MAY VARY DEPENDING ON JOB REQUIREMENTS

RATING & CAPACITIES	
DA TYPE	SPRAY
CAPACITY	35,000 LBS/HR
DA SECTION CAPACITY	800 GALS.
DA STORAGE CAPACITY	11 MINUTES MIN.
DESIGN PRESSURE	50 PSIG STEAM
DESIGN TEMP.	400° F
DEAERATION	.005 CC/LITER
OPERATING PRESSURE	5 PSIG
SURGE STORAGE CAPACITY	700 GALS
DRY WEIGHT.	10 MINUTES
OPERATING WEIGHT.	2 LBS
FLOODED WEIGHT.	2 LBS
THE ABOVE WEIGHTS DO NOT INCLUDE PUMPS, TRIM OR CONTROL PANEL.	
SHIPPING WEIGHT	
TANK (EMPTY)	2,222 LBS.
STAND/PUMPS	2,222 LBS.

LTR.	DATE	REVISIONS	BY
A	12-26-13	DESCRIPTION	XX/XX
NOTES			
1. ALL CONTROLS MOUNTED AS PER SPECIFICATION SHEET.			
2. SPECIFICATION SHEET TAKES PRIORITY OVER DRAWING.			
3. ALL DIMENSIONS ARE ±1" UNLESS OTHERWISE NOTED.			
4. DA TANK DESIGN CODE ASME SECTION VIII, DIV 1			
5. DEERATE ALL LOADS FROM 3% TO 100% OF RATED OUTLET CAPACITY			
6. ELIMINATE TITRATABLE FREE CARBON DIOXIDE TO 0.			
7. CORROSION ALLOWANCE 1/16".			
8. SUPERIOR BOILER WORKS, INC. RESERVES THE RIGHT TO FURNISH TRIM SHOWN OR AN EQUAL SUBSTITUTE AS DETERMINED BY SBW.			

THIS DRAWING IS THE PROPERTY OF SUPERIOR BOILER WORKS AND SHALL NOT BE REPRODUCED IN PART OR IN WHOLE, AND NONE OF ITS INFORMATION SHALL BE REVEALED WITHOUT PERMISSION OR TO THE DETRIMENT OF THE OWNER, IT MUST BE RETURNED UPON REQUEST.

SOLD TO: SBW

JOB: SBW

DRAWN BY: D. RIDDER

DATE: 6-26-14

CHECKED BY:

DATE:

DRAWING NAME

DEAERATOR, SPRAY

MODEL NO: SSD035

SIZE: 800 GALLONS

SCALE: 1/48

DRAWING No

15070XXXX