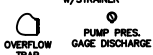


ITEMS TO SHIP LOOSE

STEAM SUPPLY TO DA STEAM INLET CONNECTION



STEAM INLET PRV w/NOISE SUPPRESSION



DEAERATOR TANK CONNECTIONS

A. (3) PUMP SUCTION	4 FLG. IN.
B. (1) WATER INLET	3 FLG. IN.
C. (1) STEAM INLET	8 FLG. IN.
D. (1) LOW TEMP. RETURN	3 FLG. IN.
E. (1) MED TEMP RETURN	2 IN.
F. (1) HI TEMP RETURN	1 1/2 IN.
G. (1) DRAIN	2 1/2 IN.
H. (1) MANUAL VENT	1 1/2 IN.
J. (1) VENT CONDENSER	12 FLG. IN.
K. (1) OVERFLOW	2 IN.
L. (1) THERMOMETER	1 IN.
M. (1) RECIRCULATION	2 1/2 IN.
N. (1) CHEMICAL FEED	1 IN.
P. (1) MANWAY	12 X 16 IN.
Q. (2) LEVEL CONTROLS	2 IN.
R. (2) LEVEL ALARMS	2 IN.
S. (1) RELIEF VALVE	3 FLG. IN.
T. (1) VACUUM BREAKER	2 1/2 IN.

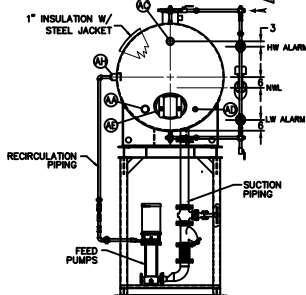
CONNECTIONS NPT UNLESS NOTED, FLANGES 150# UNLESS NOTED

SURGE TANK CONNECTIONS

X. (2) PUMP SUCTION	4 FLG. IN.
Y. (1) WATER INLET	2 IN.
Z. (1) LOW PRESS. RETURN	3 IN.
AA. (1) HI TEMP RETURN	3 IN.
AB. (1) DRAIN	2 IN.
AC. (1) OVERFLOW	2 IN.
AD. (1) CHEMICAL FEED	1 IN.
AE. (1) MANWAY	12 X 16 IN.
AF. (2) LEVEL CONTROLS	1 IN.
AG. (2) LEVEL ALARMS	1 IN.
AH. (1) RECIRCULATION	2 1/2 IN.
AJ. (1) THERMOMETER	1 IN.
AK. (1) VENT	3 IN.
AL. (2) COND. VENT	1 IN.

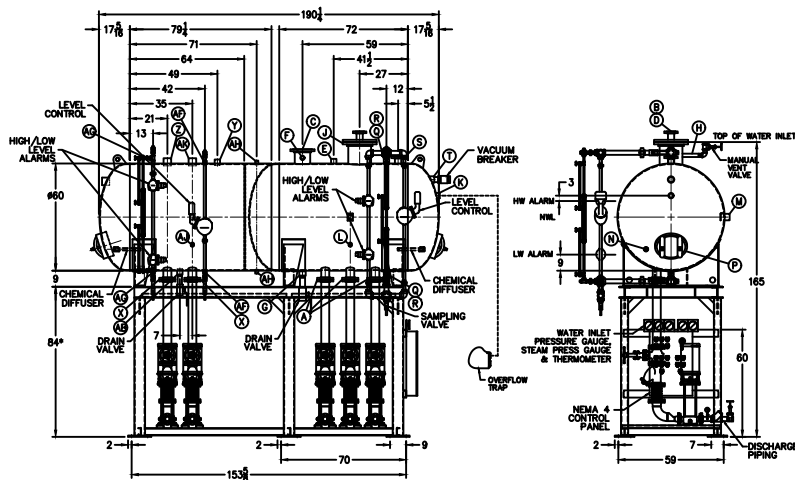
CONNECTIONS NPT UNLESS NOTED, FLANGES 150# UNLESS NOTED

FIELD CONNECT
STEAM SECTION PRESSURE GAUGE
WATER IN-LET PRESSURE GAUGE
FIELD PLUMB
WATER IN-LET PRESSURE GAUGE
(COMPONENTS NOT SUPPLIED)



- D. LOW TEMP. RETURN (<180 °F)
- E. MEDIUM TEMP. RETURN (180-227 °F)
- F. HIGH TEMP. RETURN (>227 °F)

* STAND HEIGHT SUBJECT TO PUMP NPSH REQUIREMENTS
ALL COMPONENTS CONTINGENT UPON FINAL ENGINEERING
PANEL SIZE MAY VARY DEPENDING ON JOB REQUIREMENTS



RATING & CAPACITIES	
DA TYPE	SPRAY
CAPACITY	40,000 LBS./HR.
DA SECTION CAPACITY	800 GALS.
DA STORAGE CAPACITY	10 MINUTES MIN.
DESIGN PRESSURE	50 PSIG STEAM
DESIGN TEMP.	400° F
DEAERATION	.008 CC/LITER
OPERATING PRESSURE	5 PSIG
SURGE SECTION CAPACITY	800 GALS.
SURGE STORAGE CAPACITY	10 MINUTES
DRY WEIGHT.	9 LBS.
OPERATING WEIGHT.	9 LBS.
FLOODED WEIGHT.	9 LBS.
THE ABOVE WEIGHTS DO NOT INCLUDE PUMPS, TRIM OR CONTROL PANEL	
SHIPPING WEIGHT	
TANK (EMPTY)	7.777 LBS.
STAND/PUMPS	7.777 LBS.

LTR.	DATE	REVISIONS
A	12-26-13	DESCRIPTION

NOTES	
1.	ALL CONTROLS MOUNTED AS PER SPECIFICATION SHEET.
2.	SPECIFICATION SHEET TAKES PRIORITY OVER DRAWING.
3.	ALL DIMENSIONS ARE ±1" UNLESS OTHERWISE NOTED.
4.	DA TANK DESIGN CODE ASME SECTION VIII DIV 1
5.	SEPARATE ALL LOADS FROM 3000 TO 1000 OF RATED OUTLET CAPACITY
6.	ELIMINATE TITRABLE FREE CARBON DIOXIDE TO 0.
7.	CORROSION ALLOWANCE 1/16"
8.	SUPERIOR BOILER WORKS, INC. RESERVES THE RIGHT TO FURNISH TRIM SHOWN OR AN EQUAL SUBSTITUTE AS DETERMINED BY SBW.

THIS DRAWING IS THE PROPERTY OF SUPERIOR BOILER WORKS AND SHALL NOT BE REPRODUCED IN PART OR IN WHOLE, AND NONE OF ITS INFORMATION SHALL BE REVEALED WITHOUT PERMISSION OR TO THE DETRIMENT OF THE OWNER, IT MUST BE RETURNED UPON REQUEST.			
SOLD TO:			
SBW			
JOB:			
SBW			
DRAWN BY:	DATE	CHECKED BY:	DATE
D. RIDDER	6-26-14		
DRAWING NAME			
DEAERATOR, SPRAY			
MODEL NO: SSD040			
SIZE: 800 GALLONS			
SUPERIOR BOILER WORKS, INC. HUTCHINSON, KANSAS		SCALE 1/48	DRAWING NO 15070XXX