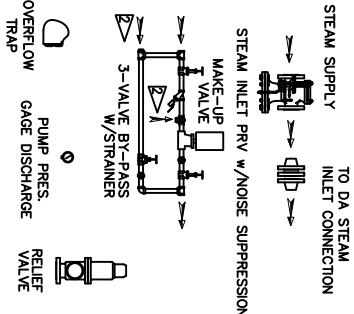
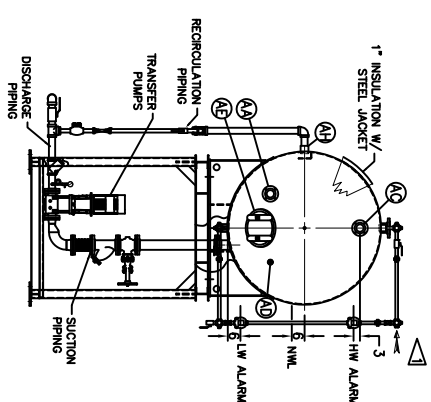


ITEMS TO SHIP LOOSE



FIELD CONNECT  
STEAM SECTION PRESSURE GAUGE  
STEAM INLET PRESSURE GAUGE  
WATER INLET PRESSURE GAUGE  
(COMPONENTS NOT SUPPLIED)

DEAERATOR TANK CONNECTIONS	
A. (3) PUMP SUCTION	4 FLG. IN.
B. (1) WATER INLET	3 FLG. IN.
C. (1) STEAM INLET	8 FLG. IN.
D. (1) LOW TEMP. RETURN	3 FLG. IN.
E. (1) MED TEMP. RETURN	2 1/2 IN.
F. (1) HI TEMP. RETURN	2 IN.
G. (1) DRAIN	2 1/2 IN.
H. (1) MANUAL VENT	1 1/2 IN.
I. (1) VENT CONDENSOR	12 FLG. IN.
J. (1) OVERFLOW	3 FLG. IN.
K. (1) THERMOMETER	1 IN.
L. (1) RECIRCULATION	2 1/2 IN.
M. (1) CHEMICAL FEED	1 IN.
N. (1) MANWAY	12 X 16 IN.
O. (2) LEVEL CONTROLS	2 IN.
P. (2) LEVEL ALARMS	2 IN.
Q. (1) RELIEF VALVE	3" 300# FLG. IN.
R. (1) VACUUM BREAKER	2 1/2 IN.



- LOW TEMP. RETURN  
(D) (<180 F)  
MEDIUM TEMP. RETURN  
(E) (180-227 F)  
HIGH TEMP. RETURN  
(F) (>227 F)

\* STAND HEIGHT SUBJECT TO PUMP NPSH REQUIREMENTS  
ALL COMPONENTS CONTINGENT UPON FINAL ENGINEERING.  
PANEL SIZE MAY VARY DEPENDING ON JOB REQUIREMENTS

CONNECTIONS NPT UNLESS NOTED, FLANGES 150# UNLESS NOTED		RATING & CAPACITIES		REVISIONS		NOTES	
SURGE TANK CONNECTIONS		LTR.	DATE	DESCRIPTION	BY	DATE	DESCRIPTION
X. (2) PUMP SUCTION	4 FLG. IN.	A	12-26-13		SS		
Y. (1) WATER INLET	2 IN.						
Z. (1) LOW PRESS. RETURN	3 FLG. IN.						
AA. (1) HI TEMP. RETURN	3 FLG. IN.						
AB. (1) DRAIN	2 1/2 IN.						
AC. (1) OVERFLOW	3 FLG. IN.						
AD. (1) CHEMICAL FEED	1 IN.						
AE. (1) MANWAY	12 X 16 IN.						
AF. (2) LEVEL CONTROLS	1 IN.						
AG. (2) LEVEL ALARMS	1 IN.						
AH. (1) RECIRCULATION	2 1/2 IN.						
AI. (1) THERMOMETER	1 IN.						
AK. (1) VENT	4 FLG. IN.						
AL. (2) COND. VENT	1 IN.						

TANK (EMPTY)	2,777	LBS.
STAND/PUMPS	2,777	LBS.

DRAWN BY: D. RIDDER	DATE	CHECKED BY: X	DATE
DRAWING NAME: DEAERATOR, SPRAY			
MODEL NO: SSD0701155-125			
SIZE: 1,450 GALLONS			
SCALE: 1/60		DRAWING No: 15070XXX	

1. ALL CONTROLS MOUNTED AS PER SPECIFICATION SHEET.  
2. SPECIFICATION SHEET TAKES PRIORITY OVER DRAWING.  
3. ALL DIMENSIONS ARE ±1 UNLESS OTHERWISE NOTED.  
4. DA TANK DESIGN CODE ASME SECTION VIII, DIV 1  
5. DEARATE ALL LOADS FROM 3% TO 100% OF RATED OUTLET CAPACITY  
6. ELIMINATE TITRATABLE FREE CARBON DIOXIDE TO 0.  
7. CORROSION ALLOWANCE 1/16"  
8. SUPERIOR BOILER WORKS, INC. RESERVES THE RIGHT TO FURNISH TRIM SHOWN OR AN EQUAL SUBSTITUTE AS DETERMINED BY SPN.