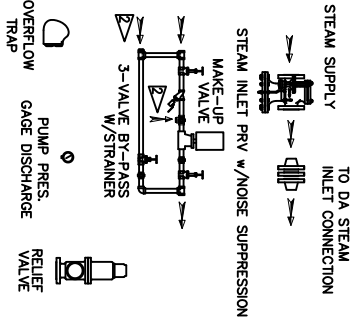
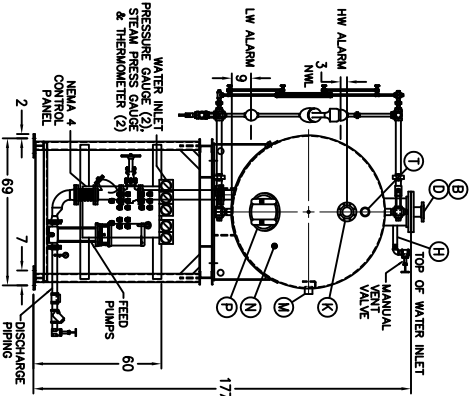
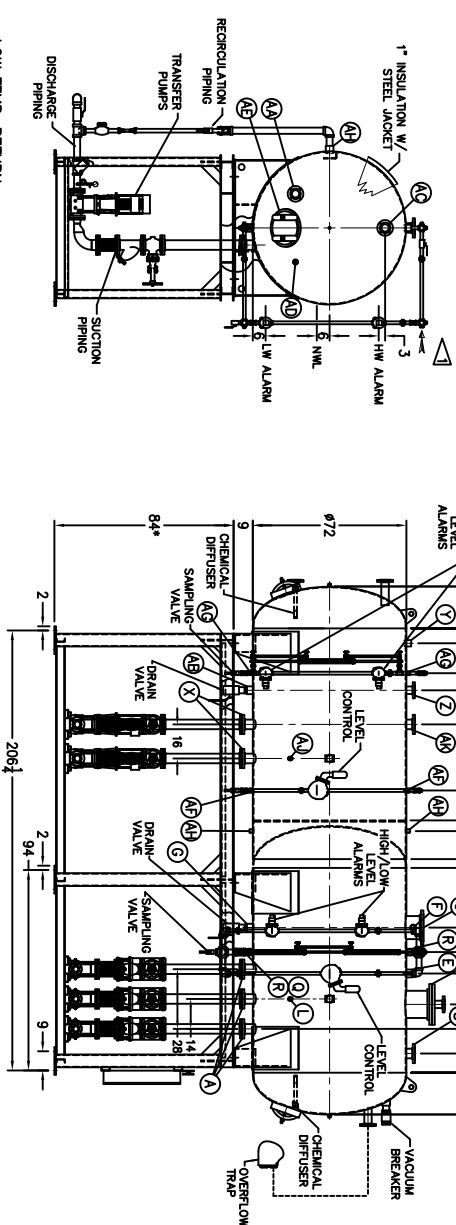


ITEMS TO SHIP LOOSE



FIELD CONNECT
STEAM SECTION PRESSURE GAUGE
STEAM INLET PRESSURE GAUGE
WATER INLET PRESSURE GAUGE
(COMPONENTS NOT SUPPLIED)



DEAERATOR TANK CONNECTIONS

- A. (3) PUMP SUCTION _____ 4 FLG. IN.
B. (1) WATER INLET _____ 3 FLG. IN.
C. (1) STEAM INLET _____ 10 FLG. IN.
D. (1) LOW TEMP. RETURN _____ 3 FLG. IN.
E. (1) MED TEMP. RETURN _____ 2 1/2 IN.
F. (1) HI TEMP RETURN _____ 2 IN.
G. (1) DRAIN _____ 2 1/2 IN.
H. (1) MANUAL VENT _____ 1 1/2 IN.
J. (1) VENT CONDENSOR _____ 12 FLG. IN.
K. (1) OVERFLOW _____ 3 FLG. IN.
L. (1) THERMOMETER _____ 1 IN.
M. (1) RECIRCULATION _____ 2 1/2 IN.
N. (1) CHEMICAL FEED _____ 1 IN.
P. (1) MANWAY _____ 12 X 16 IN.
Q. (2) LEVEL CONTROLS _____ 2 IN.
R. (2) LEVEL ALARMS _____ 2 IN.
S. (1) RELIEF VALVE _____ 3\"/>

CONNECTIONS NOT UNLESS NOTED, FLANGES 150# UNLESS NOTED

SURGE TANK CONNECTIONS

- X. (2) PUMP SUCTION _____ 4 FLG. IN.
Y. (1) WATER INLET _____ 2 IN.
Z. (1) LOW PRESS. RETURN _____ 3 FLG. IN.
AA. (1) HI TEMP RETURN _____ 3 FLG. IN.
AB. (1) DRAIN _____ 2 1/2 IN.
AC. (1) OVERFLOW _____ 3 FLG. IN.
AD. (1) CHEMICAL FEED _____ 1 IN.
AE. (1) MANWAY _____ 12 X 16 IN.
AF. (2) LEVEL CONTROLS _____ 1 IN.
AG. (2) LEVEL ALARMS _____ 1 IN.
AH. (1) RECIRCULATION _____ 2 1/2 IN.
AJ. (1) THERMOMETER _____ 1 IN.
AK. (1) VENT _____ 4 FLG. IN.
AL. (2) COND. VENT _____ 1 IN.

CONNECTIONS NOT UNLESS NOTED, FLANGES 150# UNLESS NOTED

RATING & CAPACITIES

- DA TYPE _____ SPRAY
CAPACITY _____ 80,000 LBS./HR.
DA SECTION CAPACITY _____ 1,620 GALS.
DA STORAGE CAPACITY _____ 10 MINUTES MIN.
DESIGN PRESSURE _____ 50 PSIG STEAM
DESIGN TEMP. _____ 400. F
DEAERATION _____ .005 CC/LITER
OPERATING PRESSURE _____ 5 PSIG
SURGE SECTION CAPACITY _____ 1,600 GALS.
SURGE STORAGE CAPACITY _____ 10 MINUTES
DRY WEIGHT _____ 2 LBS.
OPERATING WEIGHT _____ 2 LBS.
FLOODED WEIGHT _____ 2 LBS.
THE ABOVE WEIGHTS DO NOT INCLUDE PUMPS, TRIM OR CONTROL PANEL.

- TANK (EMPTY) _____ 2,722 LBS.
STAND/PUMPS _____ 2,722 LBS.

REVISIONS

LTR.	DATE	DESCRIPTION	BY
A	12-26-13		SS

NOTES

- ALL CONTROLS MOUNTED AS PER SPECIFICATION SHEET.
- SPECIFICATION SHEET TAKES PRIORITY OVER DRAWING.
- ALL DIMENSIONS ARE ±1 UNLESS OTHERWISE NOTED.
- DA TANK DESIGN CODE ASME SECTION VIII, DIV 1
- DEAERATE ALL LOADS FROM 30% 100% OF RATED OUTLET CAPACITY
- ELIMINATE TITRATABLE FREE CARBON DIOXIDE TO 0.
- CORROSION ALLOWANCE 1/16"
- SUPERIOR ROILER WORKS, INC. RESERVES THE RIGHT TO FURNISH TRIM SHOWN OR AN EQUAL SUBSTITUTE AS DETERMINED BY SPK.

THIS DRAWING IS THE PROPERTY OF SUPERIOR ROILER WORKS AND SHALL NOT BE REPRODUCED IN PART OR IN WHOLE AND NO PARTS INFORMATION SHALL BE FURNISHED WITHOUT PERMISSION OR TO THE RETURN OF THE OWNER. IT MUST BE RETURNED UPON REQUEST.

SCALE TO: _____

DRAWN BY: _____

D. RIDDER

DATE _____

CHECKED BY: _____

DATE _____

DEAERATOR, SPRAY

MODEL NO: SSD080T155-125

SIZE: 1,620 GALLONS



SCALE 1/60

DRAWING No

15070XXX