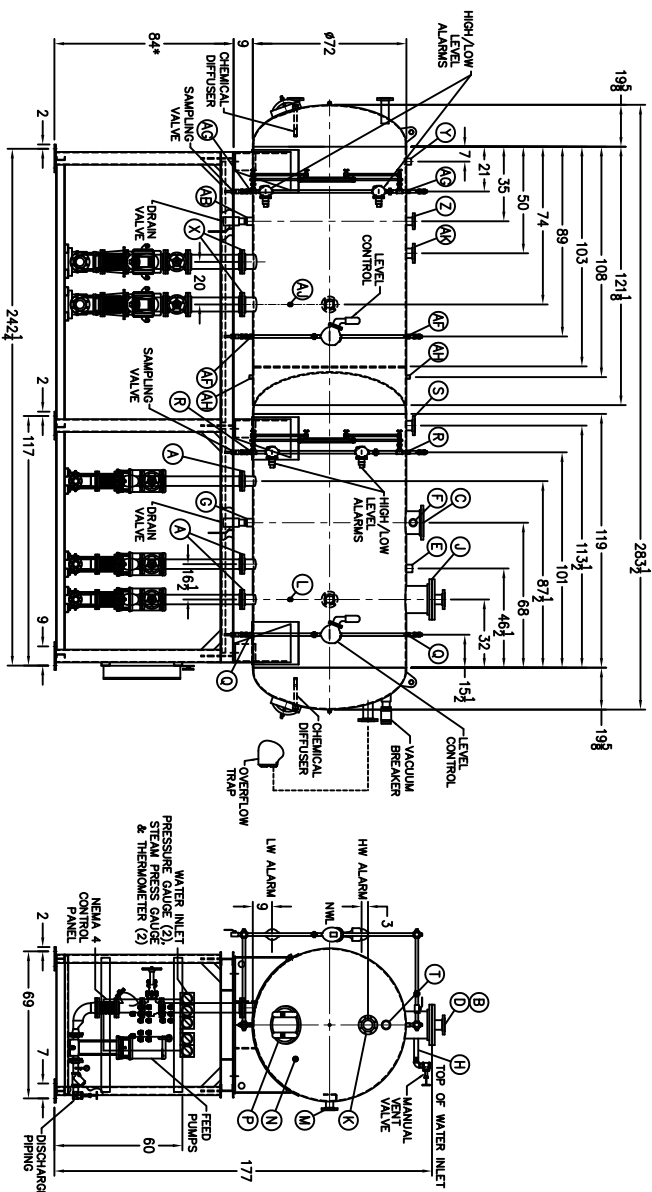
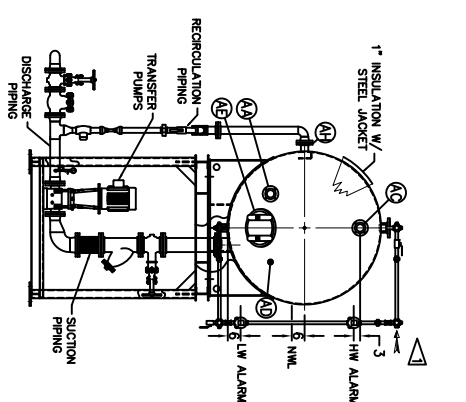
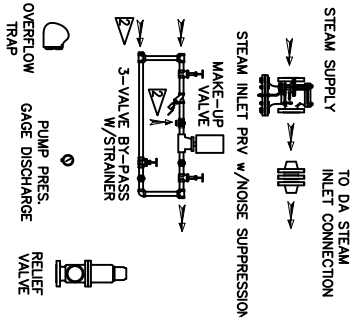


ITEMS TO SHIP LOOSE



|    |                      |    |      |          |
|----|----------------------|----|------|----------|
| A. | (3) PUMP SUCTION     | 4  | FLG  | IN.      |
| B. | (1) WATER INLET      | 4  | FLG  | IN.      |
| C. | (1) STEAM INLET      | 10 | FLG  | IN.      |
| D. | (1) LOW TEMP. RETURN | 4  | FLG  | IN.      |
| E. | (1) MED TEMP. RETURN | 2  | 1/2  | IN.      |
| F. | (1) HI TEMP. RETURN  | 2  | 1/2  | IN.      |
| G. | (1) DRAIN            | 2  | 1/2  | IN.      |
| H. | (1) MANUAL VENT      | 1  | 1/2  | IN.      |
| I. | (1) VENT CONDENSOR   | 12 | FLG  | IN.      |
| J. | (1) OVERFLOW         | 4  | FLG  | IN.      |
| K. | (1) THERMOMETER      | 1  | IN.  |          |
| L. | (1) RECORICULATOR    | 3  | FLG  | IN.      |
| M. | (1) CHEMICAL FEED    | 1  | IN.  |          |
| N. | (1) CHEMICAL FEED    | 12 | X    | 16       |
| P. | (1) MAINWAY          | 1  | IN.  |          |
| Q. | (2) LEVEL CONTROLS   | 1  | IN.  |          |
| R. | (2) LEVEL ALARMS     | 1  | IN.  |          |
| S. | (1) RELIEF VALVE     | 4" | 300# | FLG. IN. |
| T. | (1) VACUUM BREAKER   | 3  | IN.  |          |

CONNECTIONS NPT UNLESS NOTED, FLANGES 150# UNLESS NOTED

## SURGE TANK CONNECTIONS

|                          |             |
|--------------------------|-------------|
| X (2) PUMP INLET         | 6 FLG. IN.  |
| Y (1) WATER INLET        | 2 IN.       |
| Z (1) FLOW PRESS. RETURN | 3 FLG. IN.  |
| AA (1) HI TEMP RETURN    | 3 FLG. IN.  |
| AB (1) DRAIN             | 2 1/2 IN.   |
| AC (1) OVERFLOW          | 3 FLG. IN.  |
| AD (1) CHEMICAL FEED     | 1 IN.       |
| AE (1) MANWAY            | 12 X 16 IN. |
| AF (2) LEVEL CONTROLS    | 1 IN.       |
| AG (2) LEVEL ALARMS      | 1 IN.       |
| AH (1) RECIRCULATION     | 3 FLG. IN.  |
| AI (1) THERMOMETER       | 1 IN.       |
| AJ (1) VENT              | 4 FLG. IN.  |
| AH (2) COND. VENT        | 1 IN.       |

CONNECTIONS NPT UNLESS NOTED, FLANGES 150# UNLESS NOTED

| RATING & CAPACITIES   |                   |  |  | LTR. | DATE     | REVISIONS   | BY             |
|---|-------------------|--|--|------|----------|-------------|----------------|
| DA TYPE _____   | SPRAY             |  |  | A    | 12-26-13 | DESCRIPTION | <del>SSW</del> |
| CAPACITY _____  | 90,000 LBS./HR.   |  |  |      |          |             |                |
| DA SECTION CAPACITY _____   | 1,950 GALS.       |  |  |      |          |             |                |
| DA STORAGE CAPACITY _____   | 10.5 MINUTES MIN. |  |  |      |          |             |                |
| DESIGN PRESSURE _____   | 50 PSIG STEAM     |  |  |      |          |             |                |
| DESIGN TEMP. _____  | 400 F.            |  |  |      |          |             |                |
| DEAERATION _____  | .005 CC/LITER     |  |  |      |          |             |                |
| OPERATING PRESSURE _____  | 5 PSIG            |  |  |      |          |             |                |
| SURGE SECTION CAPACITY _____  | 1,800 GALS.       |  |  |      |          |             |                |
| SURGE STORAGE CAPACITY _____  | 10 MINUTES        |  |  |      |          |             |                |
| DRY WEIGHT _____  | 2 LBS.            |  |  |      |          |             |                |
| OPERATING WEIGHT _____  | 2 LBS.            |  |  |      |          |             |                |
| FLOODED WEIGHT _____  | 2 LBS.            |  |  |      |          |             |                |
| THE ABOVE WEIGHTS DO NOT INCLUDE PUMPS, TRIM OR CONTROL PANEL.  |                   |  |  |      |          |             |                |
| SHIPPING WEIGHT   |                   |  |  |      |          |             |                |
| TANK (EMPTY) _____  | 2,222 LBS.        |  |  |      |          |             |                |
| STAND /PUMPS _____  | 2,177 LBS.        |  |  |      |          |             |                |
| NOTES   |                   |  |  |      |          |             |                |
| 1. ALL CONTROLS MOUNTED AS PER SPECIFICATION SHEET.<br>2. SPECIFICATION SHEET TAKES PRIORITY OVER DRAWING.<br>3. ALL DIMENSIONS ARE $\frac{1}{4}"$ UNLESS OTHERWISE NOTED.<br>4. DA TANK DESIGN CODE ASME SECTION VIII DIV 1<br>5. ELIMINATE ALL LOSS FROM CARBON MON. OR RATED<br>6. CORROSION ALLOWANCE 1/16"<br>7. SUPPLIER BOLTER WORKS, INC. RESERVES THE RIGHT TO FURNISH TRIM<br>8. SHOWN OR AN EQUAL SUBSTITUTE AS DETERMINED BY SSW. |                   |  |  |      |          |             |                |
| <div style="display: flex; justify-content: space-between;"> <div> <p><b>Superior</b><br/>BOLTER WORKS, INC.<br/>HITCHINSON, KANSAS</p> </div> <div style="text-align: center;"> <p>MODEL NO: <u>SSD0901T155-125</u></p> <p>SIZE: <u>1.950</u> GALLONS</p> </div> <div> <p>SCALE <u>1/60</u></p> <p>DRAWING No <u>15070XXXX</u></p> </div> </div>   |                   |  |  |      |          |             |                |
| <div style="display: flex; justify-content: space-between;"> <div> <p>DR. RIDDER</p> <p>DRAWING NAME</p> <p>DEAERATOR, SPRAY</p> </div> <div style="text-align: center;"> <p>DATE</p> <p>CHECKED BY:</p> <p>DATE</p> </div> </div>  |                   |  |  |      |          |             |                |
| <p>JOB: _____</p> <p style="text-align: center;">X</p> <p style="text-align: center;">X</p>   |                   |  |  |      |          |             |                |
| <p>THIS DRAWING IS THE PROPERTY OF SUPERIOR BOLTER WORKS AND SHALL NOT BE REPRODUCED IN PART OR IN WHOLE, AND NONE OF ITS INFORMATION SHALL BE REVEALED WITHOUT PERMISSION OR TO THE DETRIMENT OF THE OWNER. IT MUST BE RETURNED UPON REQUEST.</p> <p>SOLD TO: _____</p>  |                   |  |  |      |          |             |                |