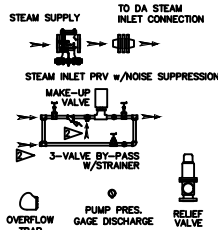


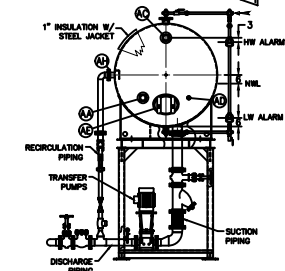
ITEMS TO SHIP LOOSE



DEAERATOR TANK CONNECTIONS

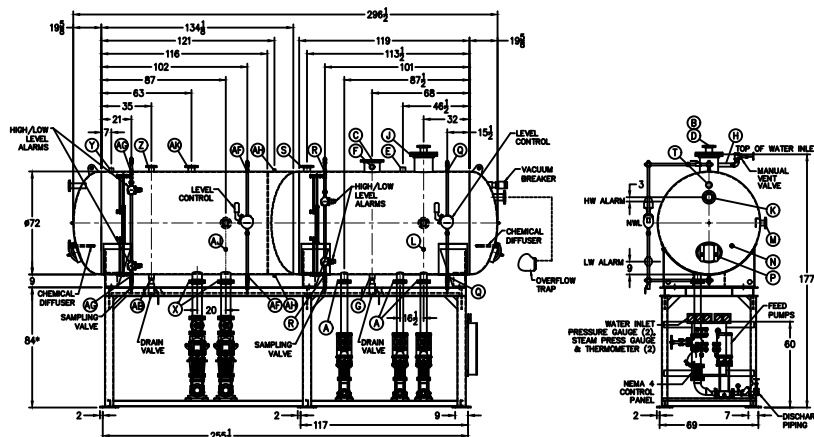
- | | |
|-------------------------|-------------|
| A. (3) PUMP SUCTION | 4 FLG. IN. |
| B. (1) WATER INLET | 4 FLG. IN. |
| C. (1) STEAM INLET | 10 FLG. IN. |
| D. (1) LOW TEMP. RETURN | 4 FLG. IN. |
| E. (1) MED TEMP RETURN | 2 1/2 IN. |
| F. (1) HI TEMP RETURN | 2 1/2 IN. |
| G. (1) DRAIN | 2 1/2 IN. |
| H. (2) MANUAL VENT | 1 IN. |
| I. (1) VENT CONDENSOR | 12 FLG. IN. |
| J. (1) OVERFLOW | 4 FLG. IN. |
| K. (1) THERMOMETER | 1 IN. |
| M. (1) RECIRCULATION | 3 FLG. IN. |
| N. (1) CHEMICAL FEED | 1 IN. |
| P. (1) MANWAY | 12 X 16 IN. |
| Q. (2) LEVEL CONTROLS | 1 IN. |
| R. (1) LOW ALARM | 1 IN. |
| S. (1) RELIEF VALVE | 4 FLG. IN. |
| T. (1) VACUUM BREAKER | 3 IN. |

FIELD CONNECT
 STEAM SECTION PRESSURE GAUGE
 WATER IN-LET PRESSURE GAUGE
 FIELD PLUMB
 WATER IN-INLET PRESSURE GAUGE
 (COMPONENTS NOT SUPPLIED)



- (D) LOW TEMP. RETURN
($<180^{\circ}\text{F}$)
- (E) MEDIUM TEMP. RETURN
($180\text{--}227^{\circ}\text{F}$)
- (F) HIGH TEMP. RETURN
($>227^{\circ}\text{F}$)

* STAND HEIGHT SUBJECT TO PUMP NPSH REQUIREMENTS
ALL COMPONENTS CONTINGENT UPON FINAL ENGINEERING.
PANEL SIZE MAY VARY DEPENDING ON JOB REQUIREMENTS



CONNECTIONS NPT UNLESS NOTED. FLANGES 150# UNLESS NOTED

SURGE TANK CONNECTIONS

- | | |
|--------------------------|-------------|
| X. (2) PUMP SUCTION | 6 FLG IN. |
| Y. (1) WATER INLET | 2 IN. |
| Z. (1) LOW PRESS. RETURN | 3 FLG IN. |
| AA. (1) HI TEMP RETURN | 3 FLG IN. |
| AB. (1) DRAIN | 2 1/2 IN. |
| AC. (1) OVERFLOW | 3 FLG IN. |
| AD. (1) CHEMICAL FEED | 1 IN. |
| AE. (1) MANWAY | 12 X 16 IN. |
| AF. (2) LEVEL CONTROLS | 1 IN. |
| AG. (2) LEVEL ALARMS | 1 IN. |
| AH. (1) RECIRCULATION | 3 FLG IN. |
| AJ. (1) THERMOMETER | 1 IN. |
| AK. (1) VENT | 4 FLG IN. |
| AH. (2) COND. VENT | 1 IN. |

CONNECTIONS NPT UNLESS NOTED, FLANGES 150# UNLESS NOTED


RATING & CAPACITIES		LTR.	DATE	REVISIONS	B
DA TYPE _____	SPRAY	A	12-26-13	DESCRIPTION	
CAPACITY _____	100,000 LBS./HR.				
DA SECTION CAPACITY _____	1,050 GALS.				
DA STORAGE CAPACITY _____	10 MINUTES MIN.				
DESIGN PRESSURE _____	50 PSIG STEAM				
DESIGN TEMP. _____	400° F				
DEAERATION _____	.005 CC/LITER				
OPERATING PRESSURE _____	5 PSIG				
SURGE SECTION CAPACITY _____	2,000 GALS.				
SURGE STORAGE CAPACITY _____	10 MINUTES				
DRY WEIGHT. _____	7 LBS.				
OPERATING WEIGHT. _____	7 LBS.				
FLOODED WEIGHT. _____	7 LBS.				
THE ABOVE WEIGHTS DO NOT INCLUDE PUMPS, TANK OR CONTROL PANELS.					
SHIPPING WEIGHT				NOTES	
TANK (EMPTY) _____	7 ??? LBS.			1. ALL CONTROLS MOUNTED AS PER SPECIFICATION SHEET.	
STAND (PUMPS) _____	7 ??? LBS.			2. SPECIFICATION SHEET TAKES PRIORITY OVER DRAWING.	
				3. ALL DIMENSIONS ARE .31" UNLESS OTHERWISE NOTED.	
				4. DA TANK DESIGN CODE IS/SG SECTION 10 DIV 1	
				5. DECATATE ALL LUNGS FROM 3000 TO 6 OF RATED OUTLET CAPACITY	
				6. ELIMINATE TITRATABLE FREE CARBON DIOXIDE TO 0.	
				7. CORROSION ALLOWANCE	
				8. SUPERIOR BOILER WORKS, INC. RESERVES THE RIGHT TO FURNISH TRIM SHOWN OR AN EQUAL SUBSTITUTE AS DETERMINED BY SOW.	

THIS DRAWING IS THE PROPERTY OF SUPERIOR BOILER WORKS AND SHALL NOT BE REPRODUCED IN PART OR IN WHOLE, AND NONE OF ITS INFORMATION SHALL BE REVEALED WITHOUT PERMISSION OR TO THE DETRIMENT OF THE OWNER. IT MUST BE RETURNED UPON REQUEST.

SOLD TO:

	X
JOB:	Y

DRAWN BY: D. RIDDER				DATE _____		CHECKED BY:		DATE	
------------------------	--	--	--	---------------	--	-------------	--	------	--

D. RIDDER			
DRAWING NAME			
DEAERATOR SPRAY			

DEAERATOR, SPRAY
MODEL NO: SSD100T155-125

SIZE: 1,950 GALLONS

SUPERIOR
PUMP & MOTOR CO.

SCALE
1/60

DRAWING No
15070XX

BOILER WORKS, INC.
MITCHELSON, KANSAS 66502