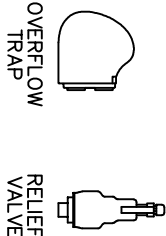
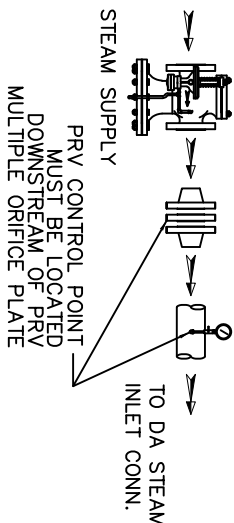


ITEMS TO SHIP LOOSE

STEAM INLET PRV W/NOISE SUPPRESSION
(IF REQUIRED)

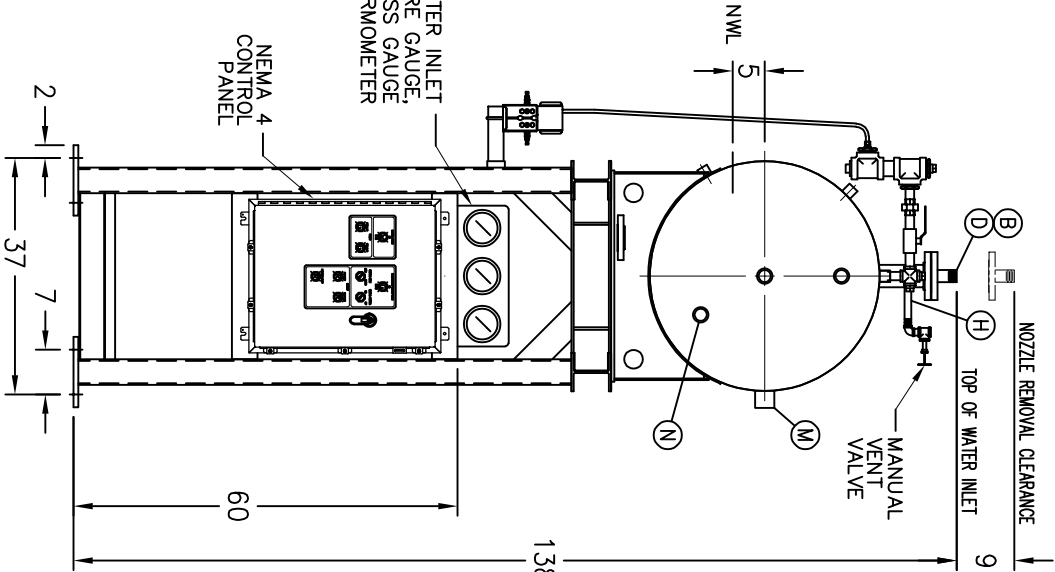
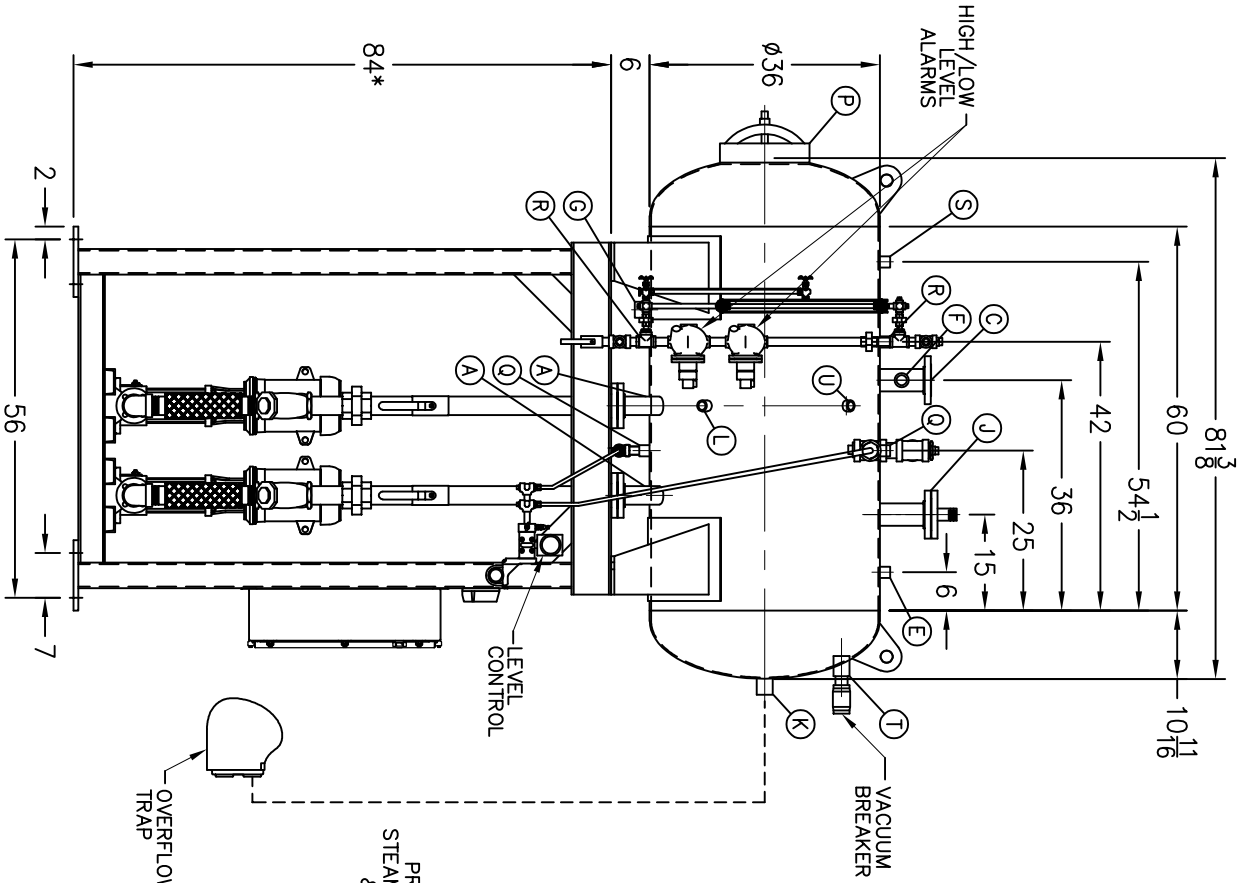
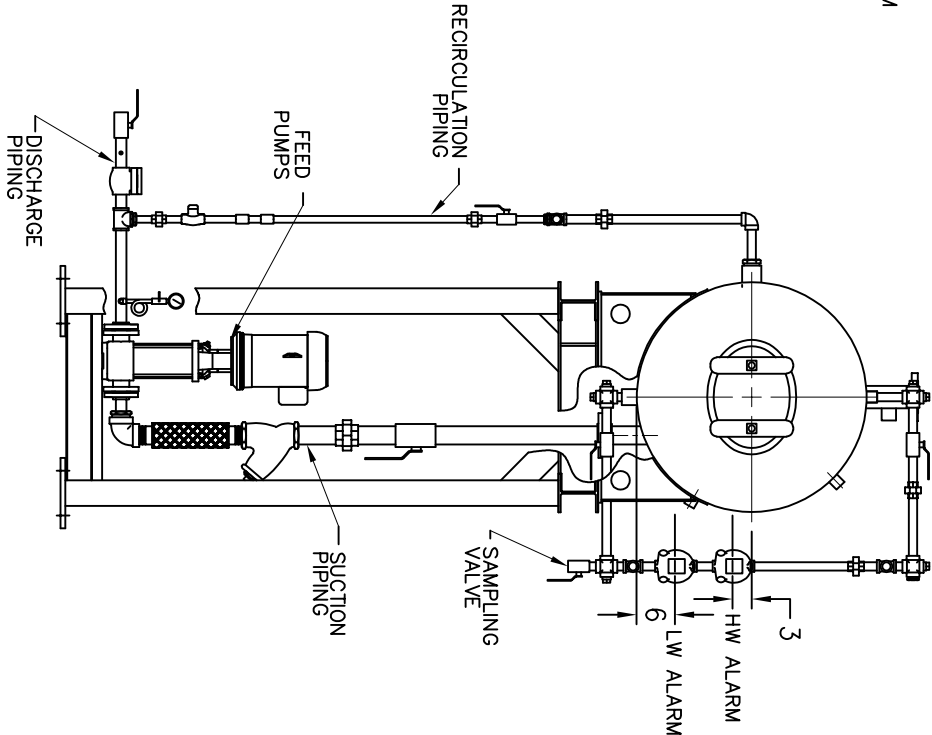


- D LOW TEMP. RETURN (<80 °F)
- E MEDIUM TEMP. RETURN (180–227 °F)
- F HIGH TEMP. RETURN (>227 °F)

* STAND HEIGHT SUBJECT TO PUMP NPSH REQUIREMENTS
PUMPS SIZED TO SPECIFIC JOB REQUIREMENTS.
ALL COMPONENTS CONTINGENT UPON FINAL ENGINEERING.
PANEL SIZE MAY VARY DEPENDING ON JOB REQUIREMENTS

DEAERATOR TANK CONNECTIONS

- A. (2) PUMP SUCTION 2 1/2 FLG. IN.
- B. (1) WATER INLET 1 1/2 IN.
- C. (1) STEAM INLET 3 FLG. IN.
- D. (1) LOW TEMP. RETURN 1 1/2 IN.
- E. (1) MED TEMP RETURN 1 IN.
- F. (1) HI TEMP RETURN 1 1/4 IN.
- G. (1) DRAIN 1 1/2 IN.
- H. (1) MANUAL VENT 3/4 IN.
- J. (1) VENT CONDENSOR 3 FLG. IN.
- K. (1) OVERFLOW 1 1/2 IN.
- L. (1) THERMOMETER 1 IN.
- M. (1) RECIRCULATION 2 IN.
- N. (1) CHEMICAL FEED 1 1/2 IN.
- P. (1) MANWAY 12 X 16 IN.
- Q. (2) LEVEL CONTROLS 1 IN.
- R. (2) LEVEL ALARMS 1 IN.
- S. (1) RELIEF VALVE 1 IN.
- T. (1) VACUUM BREAKER 1 1/2 IN.
- U. (1) AUXILIARY CONN. 1 1/2 IN.



RATING & CAPACITIES		LTR.	DATE	REVISIONS	BY
DA TYPE	SPRAY				
CAPACITY	3,500 LBS/HR				
DA SECTION CAPACITY	150 GALS.				
DA STORAGE CAPACITY	21 MINUTES MIN.				
DESIGN PRESSURE	50 PSIG STEAM				
DESIGN TEMP.	400° F				
DEAERATION	.005 CC/LITER				
OPERATING PRESSURE	5 PSIG				
DRY WEIGHT.	2,196 LBS				
OPERATING WEIGHT.	3,089 LBS				
FLOODED WEIGHT.	3,398 LBS				
THE ABOVE WEIGHTS DO NOT INCLUDE PUMPS, TRIM OR CONTROL PANEL.					
SHIPPING WEIGHT					
TANK (EMPTY)	1,198 LBS.				
STAND/PUMPS	2,200 LBS.				

THIS DRAWING IS THE PROPERTY OF SUPERIOR BOILER AND SHALL NOT BE REPRODUCED IN PART OR IN WHOLE, AND NONE OF ITS INFORMATION SHALL BE REVEALED WITHOUT PERMISSION OR TO THE DETRIMENT OF THE OWNER, IT MUST BE RETURNED UPON REQUEST.			
SOLD TO:		SB	
JOB: _____			
DRAWN BY:		DATE	CHECKED BY:
DEAERATOR, SPRAY		DATE	
DRAWING NAME			
MODEL NO: SS003D155-125			
SIZE: 150 GALLONS			
SCALE 1/30		DRAWING No	
