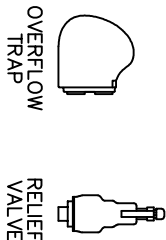
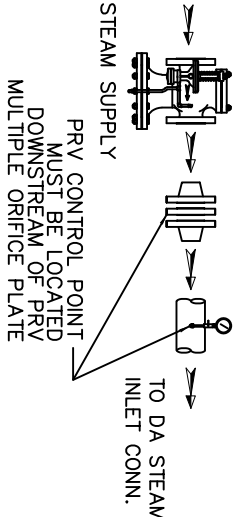


ITEMS TO SHIP LOOSE

STEAM INLET PRV W/NOISE SUPPRESSION
(IF REQUIRED)

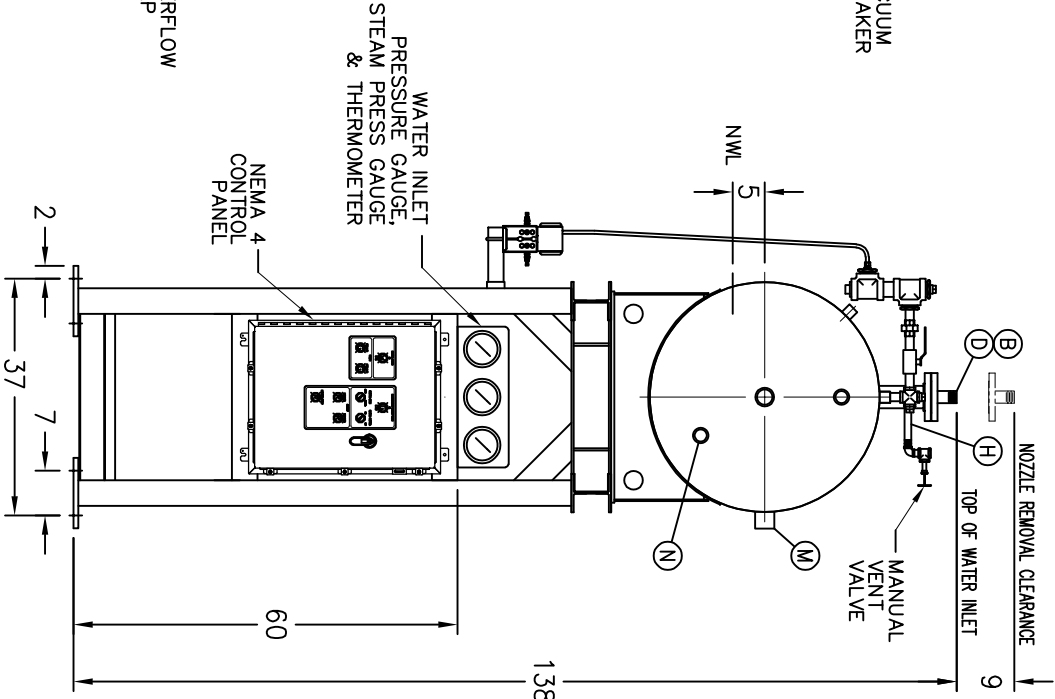
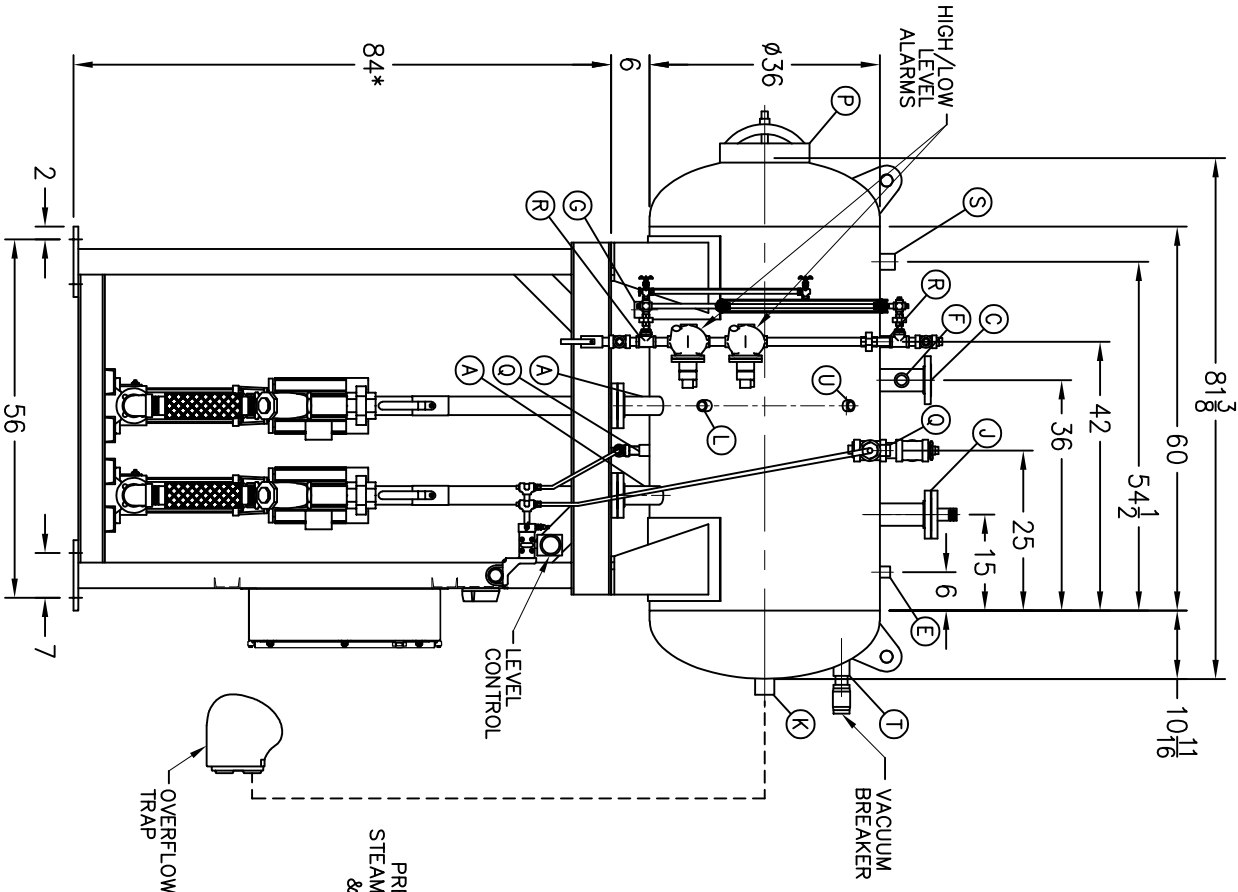
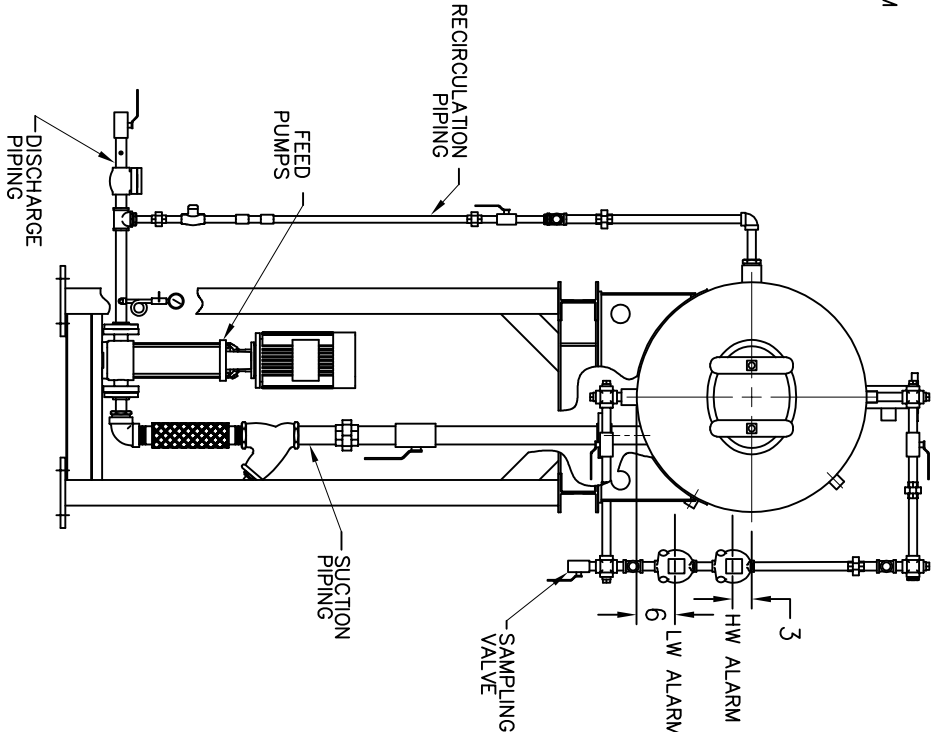


- D LOW TEMP. RETURN (<180 °F)
- E MEDIUM TEMP. RETURN (180–227 °F)
- F HIGH TEMP. RETURN (>227 °F)

* STAND HEIGHT SUBJECT TO PUMP NPSH REQUIREMENTS
PUMPS SIZED TO SPECIFIC JOB REQUIREMENTS.
ALL COMPONENTS CONTINGENT UPON FINAL ENGINEERING.
PANEL SIZE MAY VARY DEPENDING ON JOB REQUIREMENTS

DEAERATOR TANK CONNECTIONS

- A. (2) PUMP SUCTION 2 1/2 FLG. IN.
- B. (1) WATER INLET 1 1/2 IN.
- C. (1) STEAM INLET 3 FLG. IN.
- D. (1) LOW TEMP. RETURN 1 1/2 IN.
- E. (1) MED TEMP RETURN 1 IN.
- F. (1) HI TEMP RETURN 1 1/4 IN.
- G. (1) DRAIN 1 1/2 IN.
- H. (1) MANUAL VENT 3/4 IN.
- J. (1) VENT CONDENSOR 3 FLG. IN.
- K. (1) OVERFLOW 2 IN.
- L. (1) THERMOMETER 1 IN.
- M. (1) RECIRCULATION 2 IN.
- N. (1) CHEMICAL FEED 1 1/2 IN.
- P. (1) MANWAY 12 X 16 IN.
- Q. (2) LEVEL CONTROLS 1 IN.
- R. (2) LEVEL ALARMS 1 IN.
- S. (1) RELIEF VALVE 1 1/2 IN.
- T. (1) VACUUM BREAKER 1 1/2 IN.
- U. (1) AUX. CONNECTION 1 IN.



RATING & CAPACITIES		LTR.	DATE	REVISIONS	BY
DA TYPE	SPRAY				
CAPACITY	7,000 LBS/HR				
DA SECTION CAPACITY	150 GALS.				
DA STORAGE CAPACITY	10.5 MINUTES MIN.				
DESIGN PRESSURE	50 PSIG STEAM				
DESIGN TEMP.	400° F				
DEAERATION	.005 CC/LITER				
OPERATING PRESSURE	5 PSIG				
DRY WEIGHT.	2,196 LBS				
OPERATING WEIGHT.	3,089 LBS				
FLOODED WEIGHT.	3,398 LBS				
THE ABOVE WEIGHTS DO NOT INCLUDE PUMPS, TRIM OR CONTROL PANEL.					
SHIPPING WEIGHT					
TANK (EMPTY)	1,201 LBS.				
STAND/PUMPS	1,275 LBS.				

NOTES			
1. ALL CONTROLS MOUNTED AS PER SPECIFICATION SHEET.			
2. SPECIFICATION SHEET TAKES PRIORITY OVER DRAWING.			
3. ALL DIMENSIONS ARE ±1" UNLESS OTHERWISE NOTED.			
4. DA TANK DESIGN CODE ASME SECTION VIII, DIV 1			
5. DEAERATE ALL LOADS FROM 3%TO 100% OF RATED OUTLET CAPACITY			
6. ELIMINATE TITRATABLE FREE CARBON DIOXIDE TO 0.			
7. CORROSION ALLOWANCE 1/16"			
8. TANK SEPARATED FROM STAND FOR SHIPMENT.			
9. SUPERIOR BOILER, INC. RESERVES THE RIGHT TO FURNISH TRIM SHOWN OR AN EQUAL SUBSTITUTE AS DETERMINED BY SB.			

THIS DRAWING IS THE PROPERTY OF SUPERIOR BOILER AND SHALL NOT BE REPRODUCED IN PART OR IN WHOLE, AND NONE OF ITS INFORMATION SHALL BE REVEALED WITHOUT PERMISSION OR TO THE DETRIMENT OF THE OWNER, IT MUST BE RETURNED UPON REQUEST.			
SOLD TO: SB			
JOB: SB			
DRAWN BY:	DATE	CHECKED BY:	DATE
DRAWING NAME			
DEAERATOR, SPRAY			
MODEL NO: SS007D155-125			
SIZE: 150 GALLONS			
SCALE		DRAWING No	
1/30			

