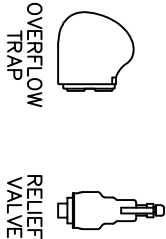
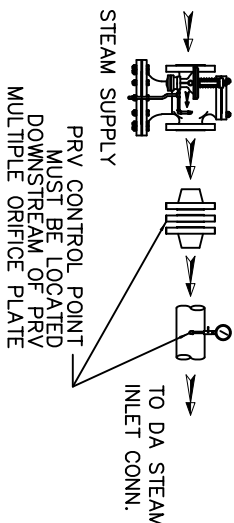


ITEMS TO SHIP LOOSE

STEAM INLET PRV w/NOISE SUPPRESSION
(IF REQUIRED)



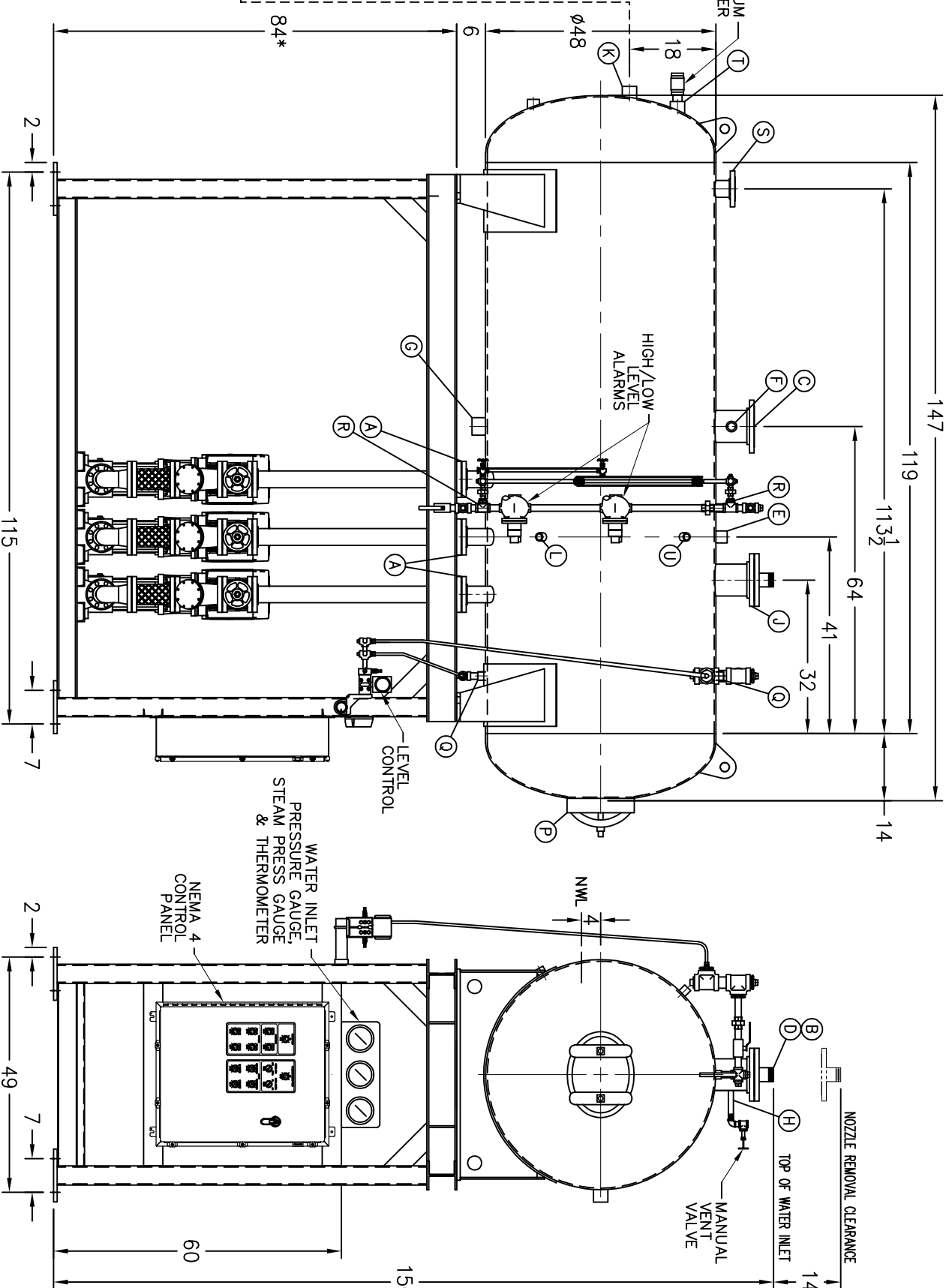
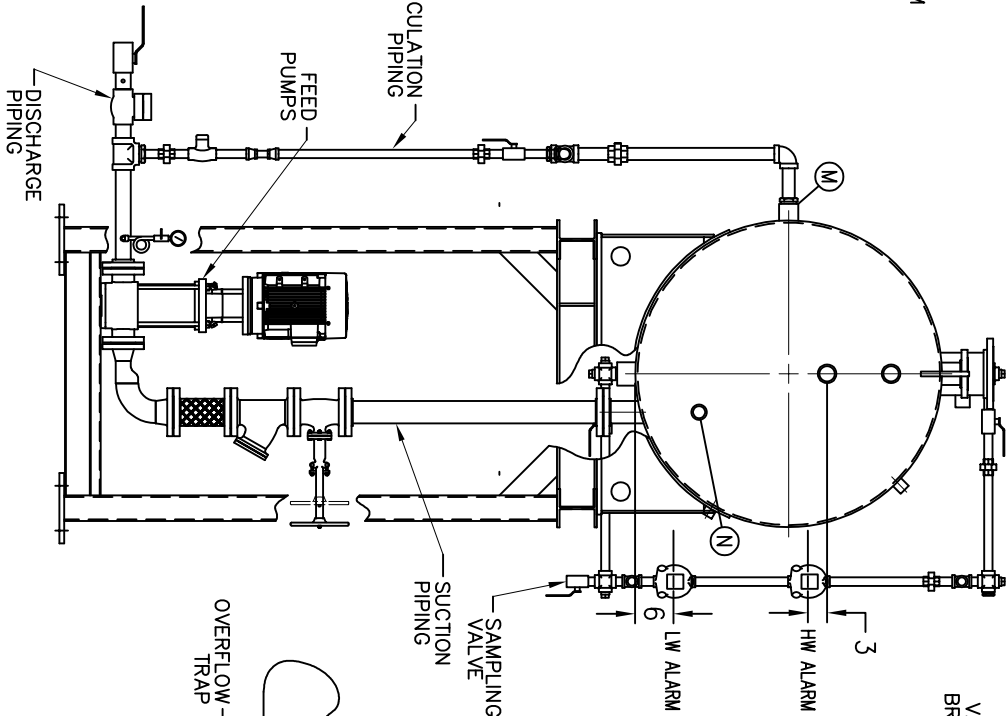
- D LOW TEMP. RETURN (<180 °F)
- E MEDIUM TEMP. RETURN (180–227 °F)
- F HIGH TEMP. RETURN (>227 °F)

* STAND HEIGHT SUBJECT TO PUMP NPSH REQUIREMENTS
PUMPS SIZED TO SPECIFIC JOB REQUIREMENTS.
ALL COMPONENTS CONTINGENT UPON FINAL ENGINEERING.
PANEL SIZE MAY VARY DEPENDING ON JOB REQUIREMENTS

DEAERATOR TANK CONNECTIONS

- A. (3) PUMP SUCTION 3 FLG. IN.
- B. (1) WATER INLET 2 1/2 IN.
- C. (1) STEAM INLET 6 FLG. IN.
- D. (1) LOW TEMP. RETURN 2 1/2 IN.
- E. (1) MED TEMP RETURN 1 1/2 IN.
- F. (1) HI TEMP RETURN 1 1/4 IN.
- G. (1) DRAIN 2 1/2 IN.
- H. (1) MANUAL VENT 3/4 IN.
- J. (1) VENT CONDENSOR 6 FLG. IN.
- K. (1) OVERFLOW 2 IN.
- L. (1) THERMOMETER 1 IN.
- M. (1) RECIRCULATION 2 IN.
- N. (1) CHEMICAL FEED 1 1/2 IN.
- P. (1) MANWAY 12 X 16 IN.
- Q. (2) LEVEL CONTROLS 1 IN.
- R. (2) LEVEL ALARMS 1 IN.
- S. (1) RELIEF VALVE 3 FLG. IN.
- T. (1) VACUUM BREAKER 2 IN.
- U. (1) AUXILIARY CONN. 2 IN.

CONNECTIONS NPT UNLESS NOTED, FLANGES 150# UNLESS NOTED



RATING & CAPACITIES	
DA TYPE	SPRAY
CAPACITY	30,000 LBS/HR
DA SECTION CAPACITY	675 GALS.
DA STORAGE CAPACITY	11 MINUTES MIN.
DESIGN PRESSURE	50 PSIG STEAM
DESIGN TEMP.	400° F
DEAERATION	.005 CC/LITER
OPERATING PRESSURE	5 PSIG
DRY WEIGHT.	4,654 LBS
OPERATING WEIGHT.	8,194 LBS
FLOODED WEIGHT.	10,023 LBS
THE ABOVE WEIGHTS DO NOT INCLUDE PUMPS, TRIM OR CONTROL PANEL.	
SHIPPING WEIGHT	
TANK (EMPTY)	3,238 LBS.
STAND/PUMPS	6,600 LBS.

RATING & CAPACITIES	LTR.	DATE	REVISIONS
DA TYPE			
CAPACITY			
DA SECTION CAPACITY			
DA STORAGE CAPACITY			
DESIGN PRESSURE			
DESIGN TEMP.			
DEAERATION			
OPERATING PRESSURE			
DRY WEIGHT.			
OPERATING WEIGHT.			
FLOODED WEIGHT.			
THE ABOVE WEIGHTS DO NOT INCLUDE PUMPS, TRIM OR CONTROL PANEL.			
SHIPPING WEIGHT			
TANK (EMPTY)			
STAND/PUMPS			

BY THIS DRAWING IS THE PROPERTY OF SUPERIOR BOILER AND SHALL NOT BE REPRODUCED IN PART OR IN WHOLE, AND NONE OF ITS INFORMATION SHALL BE REVEALED WITHOUT PERMISSION OR TO THE DETRIMENT OF THE OWNER, IT MUST BE RETURNED UPON REQUEST.			
SOLD TO: SB			
JOB: SB			
DRAWN BY: DATE CHECKED BY: DATE			
DRAWING NAME: DEAERATOR, SPRAY			
MODEL NO: SS030T155-125			
SIZE: 675 GALLONS			
SCALE: 1/30			
DRAWING No			

NOTES

1. ALL CONTROLS MOUNTED AS PER SPECIFICATION SHEET.
2. SPECIFICATION SHEET TAKES PRIORITY OVER DRAWING.
3. ALL DIMENSIONS ARE ±1" UNLESS OTHERWISE NOTED.
4. DA TANK DESIGN CODE ASME SECTION VIII, DIV 1
5. DEAEATE ALL LOADS FROM 3%TO 100% OF RATED OUTLET CAPACITY
6. ELIMINATE TITRATABLE FREE CARBON DIOXIDE TO 0.
7. CORROSION ALLOWANCE 1/16"
8. TANK SEPARATED FROM STAND FOR SHIPMENT.
9. SUPERIOR BOILER, INC. RESERVES THE RIGHT TO FURNISH TRIM SHOWN OR AN EQUAL SUBSTITUTE AS DETERMINED BY SB.

