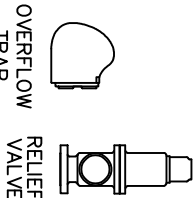
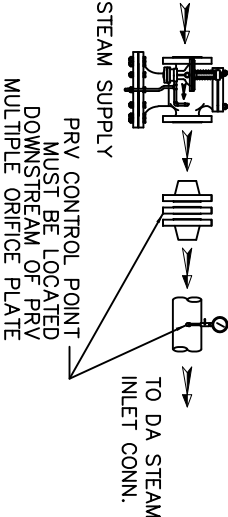


ITEMS TO SHIP LOOSE

STEAM INLET PRV w/NOISE SUPPRESSION  
(IF REQUIRED)



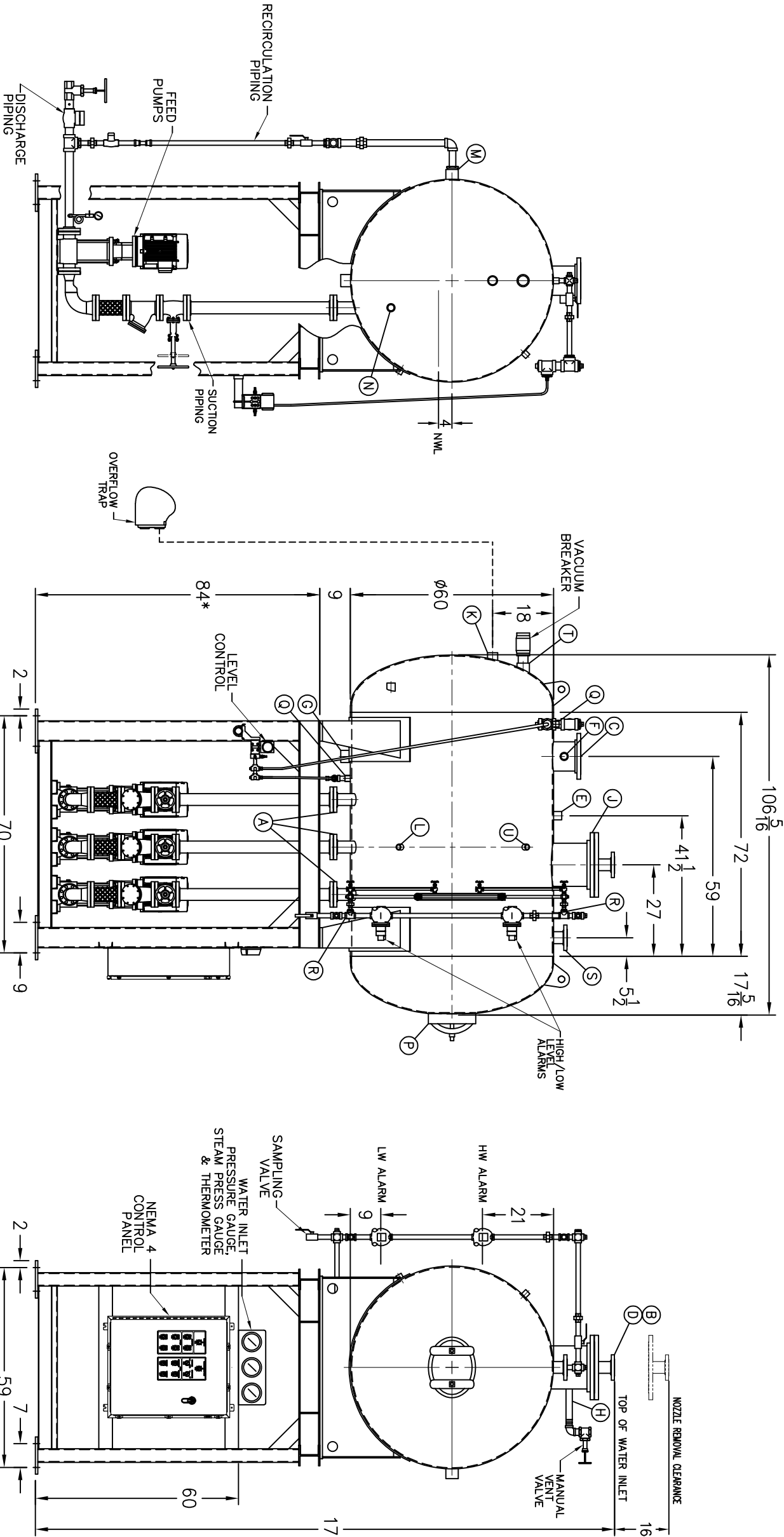
- D LOW TEMP. RETURN (<180 °F)
- E MEDIUM TEMP. RETURN (180–227 °F)
- F HIGH TEMP. RETURN (>227 °F)

\* STAND HEIGHT SUBJECT TO PUMP NPSH REQUIREMENTS  
PUMPS SIZED TO SPECIFIC JOB REQUIREMENTS.  
ALL COMPONENTS CONTINGENT UPON FINAL ENGINEERING.  
PANEL SIZE MAY VARY DEPENDING ON JOB REQUIREMENTS

DEAERATOR TANK CONNECTIONS

- A. (3) PUMP SUCTION \_\_\_\_\_ 3 FLG. IN.
- B. (1) WATER INLET \_\_\_\_\_ 3 FLG. IN.
- C. (1) STEAM INLET \_\_\_\_\_ 8 FLG. IN.
- D. (1) LOW TEMP. RETURN \_\_\_\_\_ 3 FLG. IN.
- E. (1) MED TEMP RETURN \_\_\_\_\_ 1 1/2 IN.
- F. (1) HI TEMP RETURN \_\_\_\_\_ 1 1/2 IN.
- G. (1) DRAIN \_\_\_\_\_ 2 1/2 IN.
- H. (1) MANUAL VENT \_\_\_\_\_ 1 1/2 IN.
- J. (1) VENT CONDENSOR \_\_\_\_\_ 12 FLG. IN.
- K. (1) OVERFLOW \_\_\_\_\_ 2 IN.
- L. (1) THERMOMETER \_\_\_\_\_ 1 IN.
- M. (1) RECIRCULATION \_\_\_\_\_ 2 1/2 IN.
- N. (1) CHEMICAL FEED \_\_\_\_\_ 1 1/2 IN.
- P. (1) MANWAY \_\_\_\_\_ 12 X 16 IN.
- Q. (2) LEVEL CONTROLS \_\_\_\_\_ 1 IN.
- R. (2) LEVEL ALARMS \_\_\_\_\_ 1 IN.
- S. (1) RELIEF VALVE \_\_\_\_\_ 3" 300# FLG. IN.
- T. (1) VACUUM BREAKER \_\_\_\_\_ 2 1/2 IN.
- U. (1) AUXILIARY CONN. \_\_\_\_\_ 1 IN.

CONNECTIONS NPT UNLESS NOTED, FLANGES 150# UNLESS NOTED



RATING & CAPACITIES

DA TYPE	SPRAY
CAPACITY	35,000 LBS/HR
DA SECTION CAPACITY	800 GALS.
DA STORAGE CAPACITY	11 MINUTES MIN.
DESIGN PRESSURE	50 PSIG STEAM
DESIGN TEMP.	400° F
DEAERATION	.005 CC/LITER
OPERATING PRESSURE	5 PSIG
DRY WEIGHT.	4,984 LBS
OPERATING WEIGHT.	9,668 LBS
FLOODED WEIGHT.	12,065 LBS
THE ABOVE WEIGHTS DO NOT INCLUDE PUMPS, TRIM OR CONTROL PANEL.	
SHIPPING WEIGHT	
TANK (EMPTY)	3,555 LBS.
STAND/PUMPS	6,590 LBS.

LTR. DATE

REVISIONS

BY

NOTES

1. ALL CONTROLS MOUNTED AS PER SPECIFICATION SHEET.
2. SPECIFICATION SHEET TAKES PRIORITY OVER DRAWING.
3. ALL DIMENSIONS ARE ±1" UNLESS OTHERWISE NOTED.
4. DA TANK DESIGN CODE ASME SECTION VIII, DIV 1
5. DEAERATE ALL LOADS FROM 3%TO 100% OF RATED OUTLET CAPACITY
6. ELIMINATE TITRATABLE FREE CARBON DIOXIDE TO 0.
7. CORROSION ALLOWANCE 1/16"
8. TANK SEPARATED FROM STAND FOR SHIPMENT.
9. SUPERIOR BOILER, INC. RESERVES THE RIGHT TO FURNISH TRIM SHOWN OR AN EQUAL SUBSTITUTE AS DETERMINED BY SB.

THIS DRAWING IS THE PROPERTY OF SUPERIOR BOILER AND SHALL NOT BE REPRODUCED IN PART OR IN WHOLE, AND NONE OF ITS INFORMATION SHALL BE REVEALED WITHOUT PERMISSION OR TO THE DETRIMENT OF THE OWNER, IT MUST BE RETURNED UPON REQUEST.

SOLD TO:

SB

JOB:

SB

DRAWN BY:

DATE

CHECKED BY:

DATE

DRAWING NAME

DEAERATOR, SPRAY

MODEL NO: SS035T155–125

SIZE: 800 GALLONS

SCALE

1/36

DRAWING No

