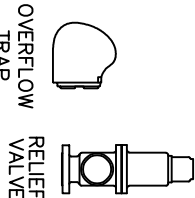
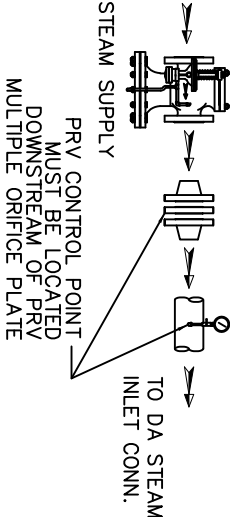


ITEMS TO SHIP LOOSE

STEAM INLET PRV w/ NOISE SUPPRESSION
(IF REQUIRED)



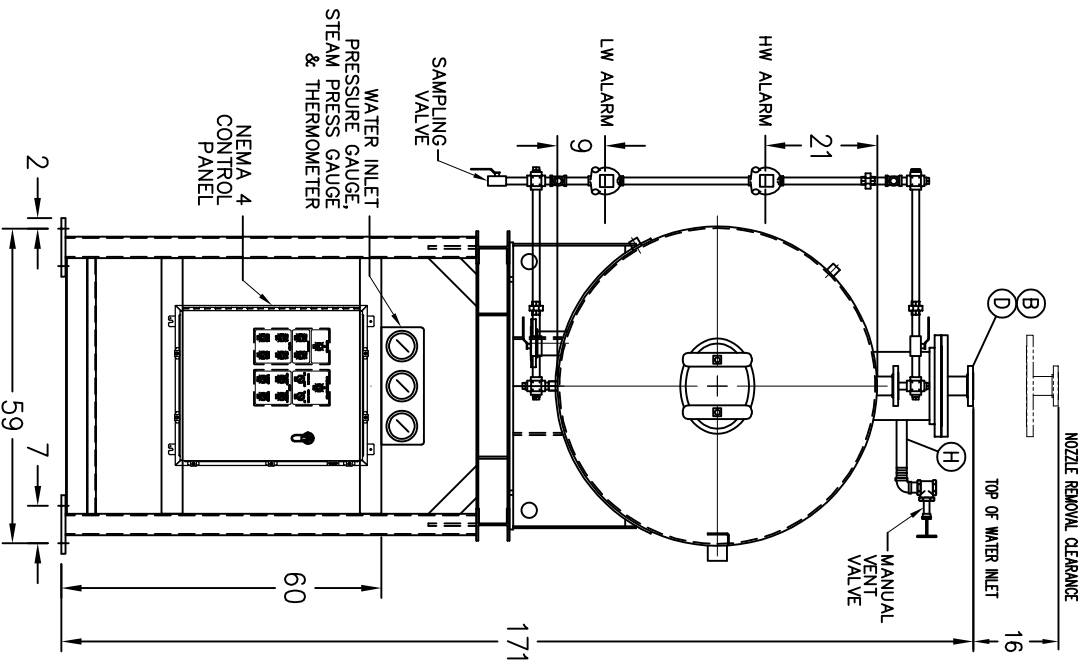
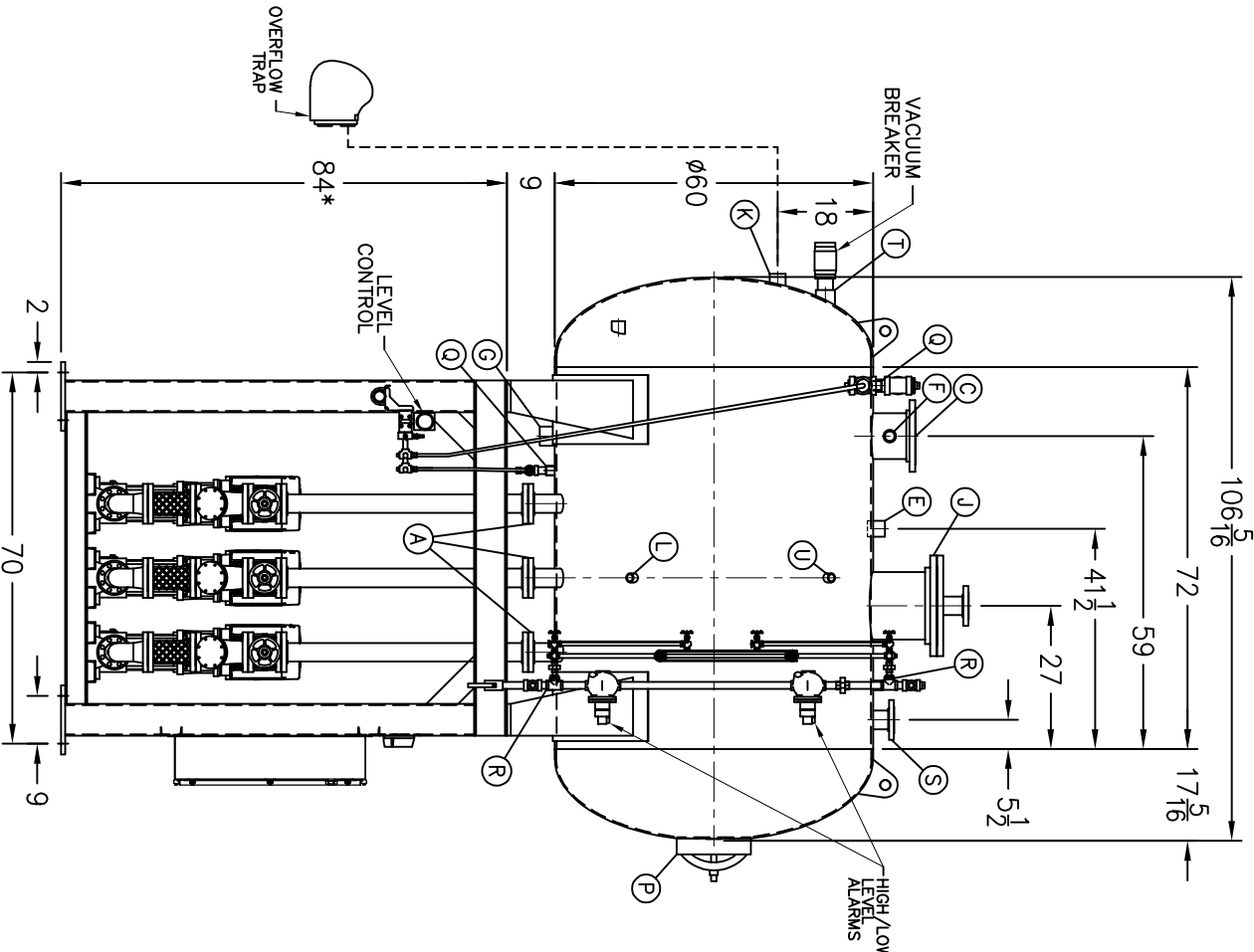
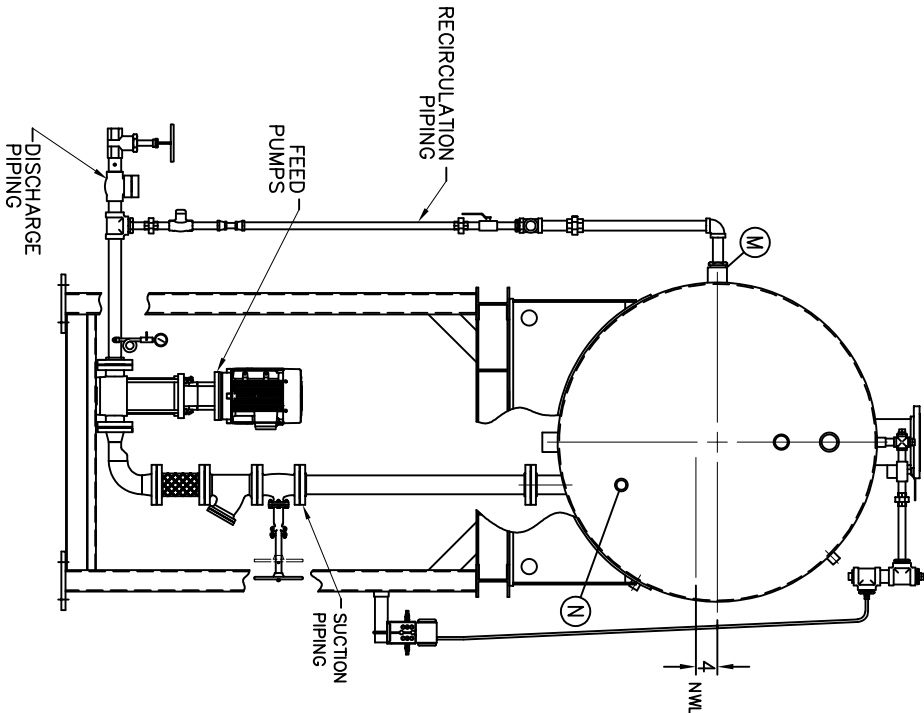
- D LOW TEMP. RETURN (<180 °F)
- E MEDIUM TEMP. RETURN (180–227 °F)
- F HIGH TEMP. RETURN (>227 °F)

* STAND HEIGHT SUBJECT TO PUMP NPSH REQUIREMENTS
PUMPS SIZED TO SPECIFIC JOB REQUIREMENTS.
ALL COMPONENTS CONTINGENT UPON FINAL ENGINEERING.
PANEL SIZE MAY VARY DEPENDING ON JOB REQUIREMENTS

DEAERATOR TANK CONNECTIONS

- A. (3) PUMP SUCTION _____ 3 FLG. IN.
- B. (1) WATER INLET _____ 3 FLG. IN.
- C. (1) STEAM INLET _____ 8 FLG. IN.
- D. (1) LOW TEMP. RETURN _____ 3 FLG. IN.
- E. (1) MED TEMP RETURN _____ 2 IN.
- F. (1) HI TEMP RETURN _____ 1 1/2 IN.
- G. (1) DRAIN _____ 2 1/2 IN.
- H. (1) MANUAL VENT _____ 1 1/2 IN.
- J. (1) VENT CONDENSOR _____ 12 FLG. IN.
- K. (1) OVERFLOW _____ 2 IN.
- L. (1) THERMOMETER _____ 1 IN.
- M. (1) RECIRCULATION _____ 2 1/2 IN.
- N. (1) CHEMICAL FEED _____ 1 1/2 IN.
- P. (1) MANWAY _____ 12 X 16 IN.
- Q. (2) LEVEL CONTROLS _____ 1 IN.
- R. (2) LEVEL ALARMS _____ 1 IN.
- S. (1) RELIEF VALVE _____ 3" 300# FLG. IN.
- T. (1) VACUUM BREAKER _____ 2 1/2 IN.
- U. (1) AUXILIARY CONN. _____ 1 IN.

CONNECTIONS NPT UNLESS NOTED, FLANGES 150# UNLESS NOTED



RATING & CAPACITIES			REVISIONS		
DA TYPE		SPRAY	LTR.	DATE	BY
CAPACITY		40,000 LBS./HR			
DA SECTION CAPACITY		800 GALS.			
DA STORAGE CAPACITY		10 MINUTES MIN.			
DESIGN PRESSURE		50 PSIG STEAM			
DESIGN TEMP.		400° F			
DEAERATION		.005 CC/LITER			
OPERATING PRESSURE		5 PSIG			
DRY WEIGHT.		4,984 LBS			
OPERATING WEIGHT.		9,668 LBS			
FLOODED WEIGHT.		12,065 LBS			
THE ABOVE WEIGHTS DO NOT INCLUDE PUMPS, TRIM OR CONTROL PANEL.					
SHIPPING WEIGHT					
TANK (EMPTY)		3,559 LBS.			
STAND/PUMPS		6,910 LBS.			

NOTES

1. ALL CONTROLS MOUNTED AS PER SPECIFICATION SHEET.

2. SPECIFICATION SHEET TAKES PRIORITY OVER DRAWING.

3. ALL DIMENSIONS ARE ±1" UNLESS OTHERWISE NOTED.

4. DA TANK DESIGN CODE ASME SECTION VIII, DIV 1

5. DEAERATE ALL LOADS FROM 3% TO 100% OF RATED OUTLET CAPACITY

6. ELIMINATE TITRATABLE FREE CARBON DIOXIDE TO 0.

7. CORROSION ALLOWANCE 1/16"

8. TANK SEPARATED FROM STAND FOR SHIPMENT.

9. SUPERIOR BOILER, INC. RESERVES THE RIGHT TO FURNISH TRIM SHOWN OR AN EQUAL SUBSTITUTE AS DETERMINED BY SB.

THIS DRAWING IS THE PROPERTY OF SUPERIOR BOILER AND SHALL NOT BE REPRODUCED IN PART OR IN WHOLE, AND NONE OF ITS INFORMATION SHALL BE REVEALED WITHOUT PERMISSION OR TO THE DETRIMENT OF THE OWNER, IT MUST BE RETURNED UPON REQUEST.

SOLD TO:

SB

JOB:

SB

DRAWN BY:

DATE

CHECKED BY:

DATE

DRAWING NAME

DEAERATOR, SPRAY

MODEL NO:

SS040T155-125

SIZE:

800 GALLONS

SCALE

1/36

DRAWING No