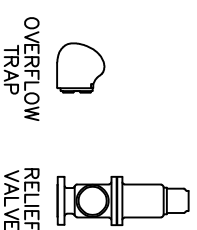
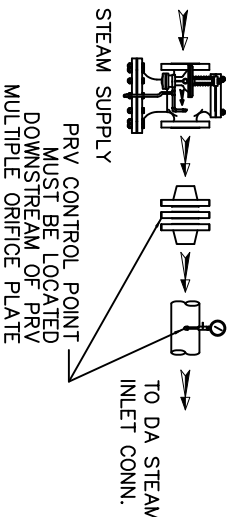


ITEMS TO SHIP LOOSE

STEAM INLET PRV w/NOISE SUPPRESSION
(IF REQUIRED)

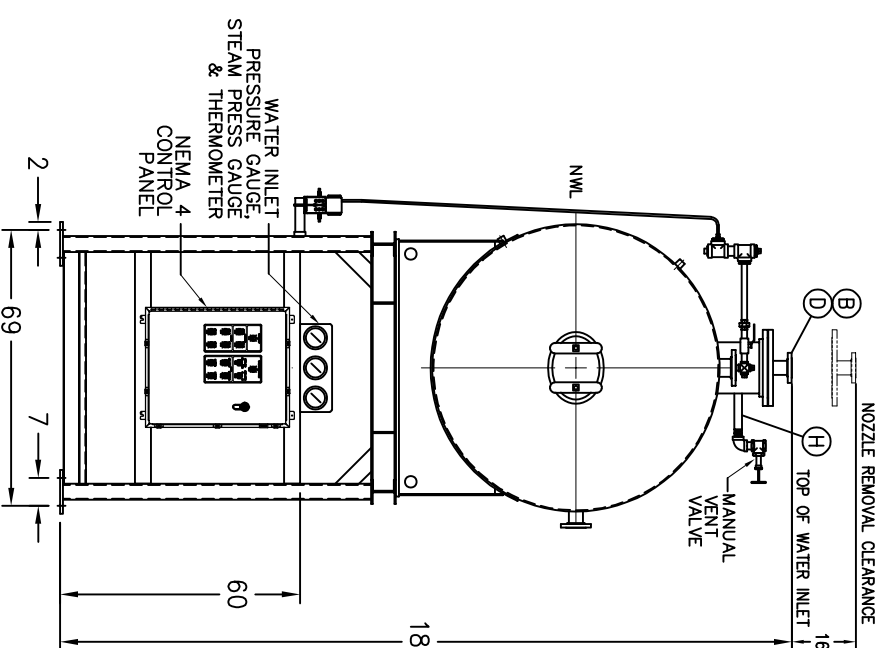
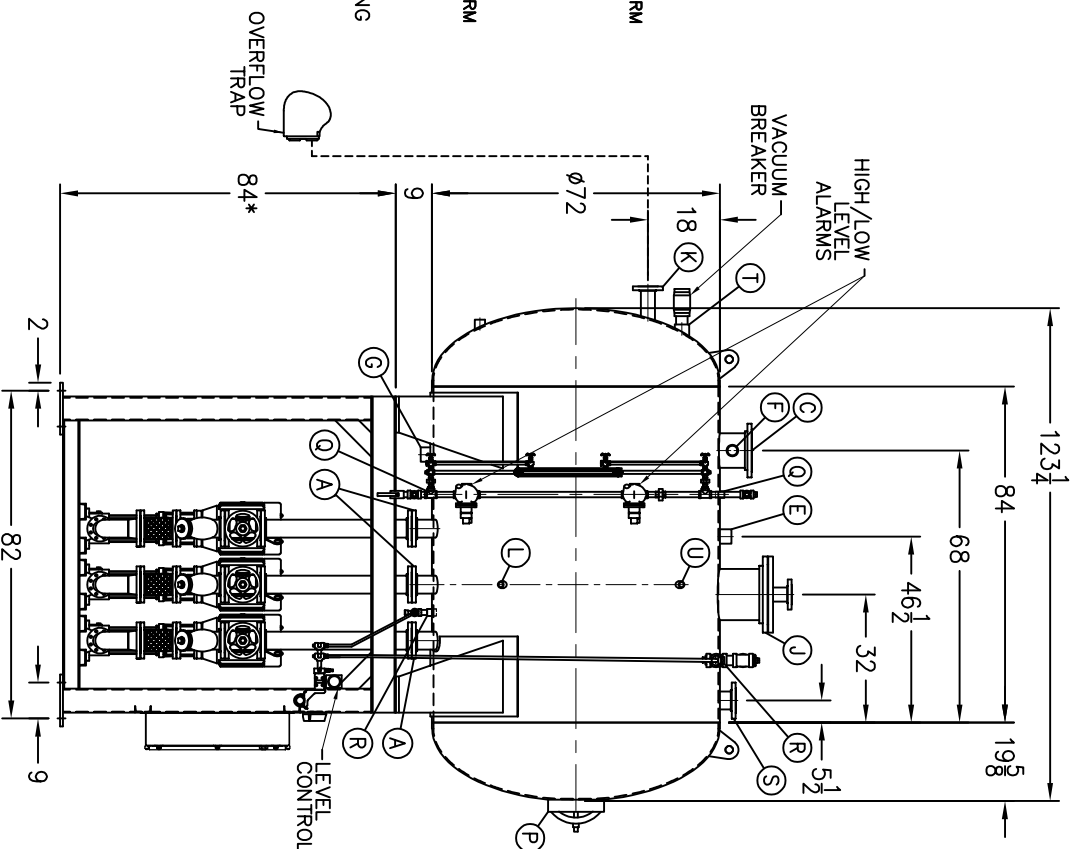
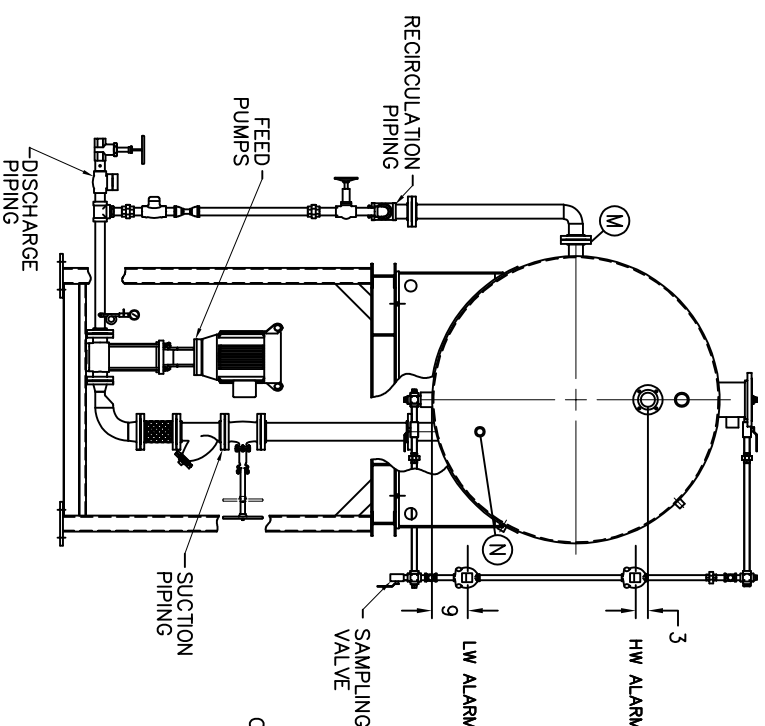
- ☐ D LOW TEMP. RETURN
 (<180 °F)
☐ E MEDIUM TEMP. RETURN
 (180–227 °F)
☐ F HIGH TEMP. RETURN
 (>227 °F)

* STAND HEIGHT SUBJECT TO PUMP NPSH REQUIREMENTS
PUMPS SIZED TO SPECIFIC JOB REQUIREMENTS.
ALL COMPONENTS CONTINGENT UPON FINAL ENGINEERING.
PANEL SIZE MAY VARY DEPENDING ON JOB REQUIREMENTS

DEAERATOR TANK CONNECTIONS

- | | | |
|-------------------------|---------|----|
| A. (3) PUMP SUCTION | 4 FLG | IN |
| B. (1) WATER INLET | 3 FLG | IN |
| C. (1) STEAM INLET | 8 FLG | IN |
| D. (1) LOW TEMP. RETURN | 3 FLG | IN |
| E. (1) MED TEMP RETURN | 2 1/2 | IN |
| F. (1) HI TEMP RETURN | 2 | IN |
| G. (1) DRAIN | 2 1/2 | IN |
| H. (1) MANUAL VENT | 1 1/2 | IN |
| J. (1) VENT CONDENSOR | 12 FLG | IN |
| K. (1) OVERFLOW | 3 FLG | IN |
| L. (1) THERMOMETER | 1 | IN |
| M. (1) RECIRCULATION | 3 FLG | IN |
| N. (1) CHEMICAL FEED | 1 1/2 | IN |
| P. (1) MANWAY | 12 X 16 | IN |
| Q. (2) LEVEL CONTROLS | 1 | IN |
| R. (2) LEVEL ALARMS | 1 1/2 | IN |
| S. (1) RELIEF VALVE | 4 FLG | IN |
| T. (1) VACUUM BREAKER | 2 1/2 | IN |
| U. (1) AUX. CONNECTION | 1 | IN |

CONNECTIONS NPT UNLESS NOTED, FLANGES 150# UNLESS NOTED



RATING & CAPACITIES			LTR.	DATE	REVISIONS	BY
DA TYPE	SPRAY					
CAPACITY	70,000 LBS/HR					
DA SECTION CAPACITY	1,450 GALS.					
DA STORAGE CAPACITY	10 MINUTES MIN.					
DESIGN PRESSURE	50 PSIG STEAM					
DESIGN TEMP.	400° F					
DEAERATION	.005 CC/LITER					
OPERATING PRESSURE	5 PSIG					
DRY WEIGHT.	6,335 LBS					
OPERATING WEIGHT.	14,209 LBS					
FLOODED WEIGHT.	19,127 LBS					
THE ABOVE WEIGHTS DO NOT INCLUDE PUMPS, TRIM OR CONTROL PANEL.						
SHIPPING WEIGHT						
TANK (EMPTY)	4,754	LBS.				
STAND/PUMPS	8,900	LBS.				
NOTES						
1. ALL CONTROLS MOUNTED AS PER SPECIFICATION SHEET.						
2. SPECIFICATION SHEET TAKES PRIORITY OVER DRAWING.						
3. ALL DIMENSIONS ARE ±1" UNLESS OTHERWISE NOTED.						
4. DA TANK DESIGN CODE ASME SECTION VIII, DIV 1						
5. DEAEATE ALL LOADS FROM 3%TO 100% OF RATED OUTLET CAPACITY						
6. ELIMINATE TITRATABLE FREE CARBON DIOXIDE TO 0.						
7. CORROSION ALLOWANCE 1/16"						
8. TANK SEPARATED FROM STAND FOR SHIPMENT.						
9. SUPERIOR BOILER, INC. RESERVES THE RIGHT TO FURNISH TRIM						
SHOWN OR AN EQUAL SUBSTITUTE AS DETERMINED BY SB.						
THIS DRAWING IS THE PROPERTY OF SUPERIOR BOILER AND SHALL NOT BE REPRODUCED IN PART OR IN WHOLE, AND NONE OF ITS INFORMATION SHALL BE REVEALED WITHOUT PERMISSION OR TO THE DETRIMENT OF THE OWNER, IT MUST BE RETURNED UPON REQUEST.						
SOLD TO: SB						
JOB: SB						
DRAWN BY:		DATE	CHECKED BY:		DATE	
DRAWING NAME						
DEAERATOR, SPRAY						
MODEL NO: SS070T155-125						
SIZE: 1,450 GALLONS						
SCALE		DRAWING No				
1/48						
