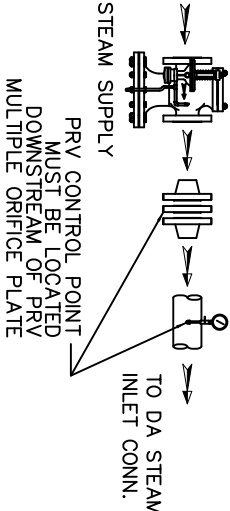


ITEMS TO SHIP LOOSE

STEAM INLET PRV w/NOISE SUPPRESSION
(IF REQUIRED)

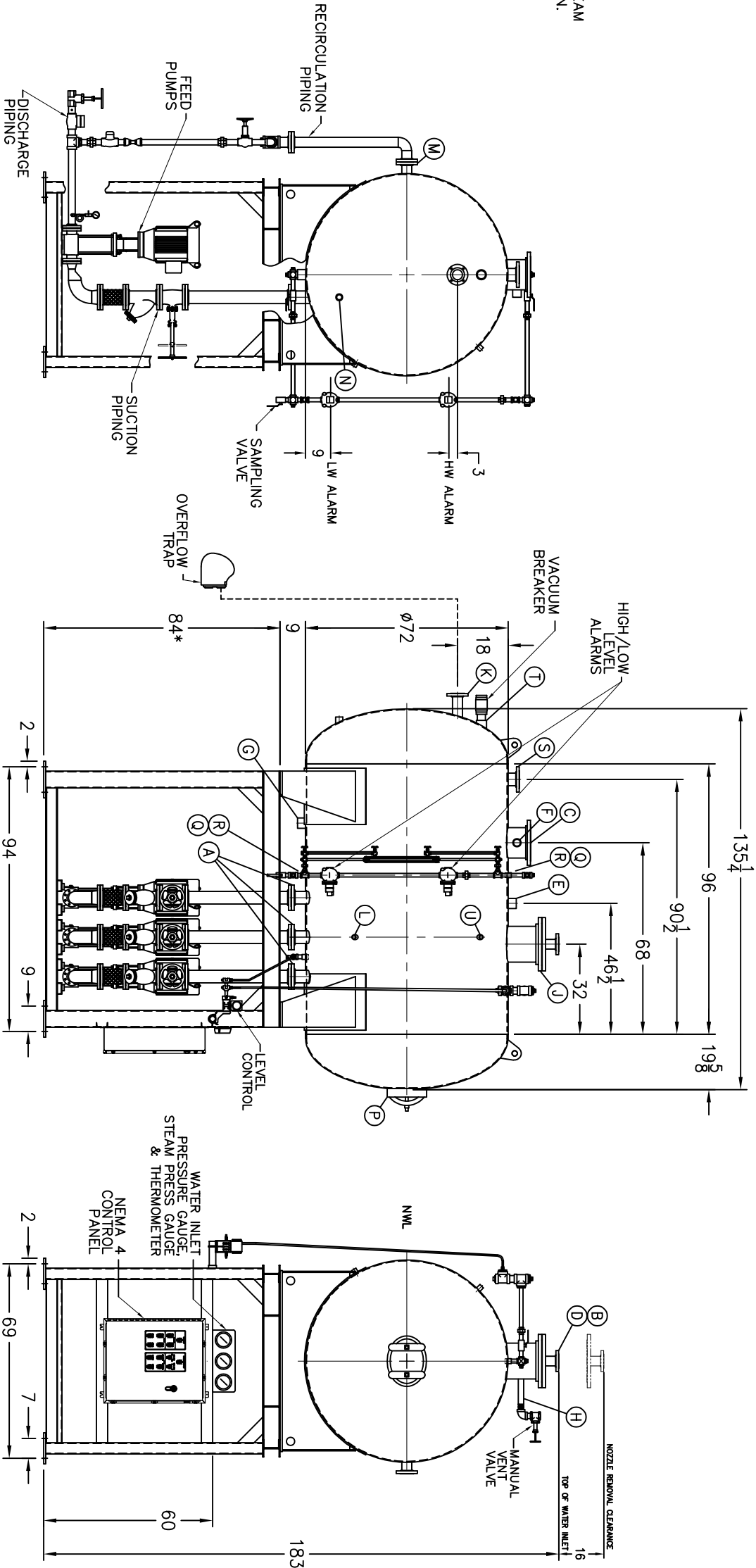


- D LOW TEMP. RETURN (<180 °F)
- E MEDIUM TEMP. RETURN (180–227 °F)
- F HIGH TEMP. RETURN (>227 °F)

* STAND HEIGHT SUBJECT TO PUMP NPSH REQUIREMENTS
PUMPS SIZED TO SPECIFIC JOB REQUIREMENTS.
ALL COMPONENTS CONTINGENT UPON FINAL ENGINEERING.
PANEL SIZE MAY VARY DEPENDING ON JOB REQUIREMENTS

DEAERATOR TANK CONNECTIONS

- A. (3) PUMP SUCTION _____ 4 FLG. IN.
- B. (1) WATER INLET _____ 3 FLG. IN.
- C. (1) STEAM INLET _____ 10 FLG. IN.
- D. (1) LOW TEMP. RETURN _____ 3 FLG. IN.
- E. (1) MED TEMP RETURN _____ 2 1/2 IN.
- F. (1) HI TEMP RETURN _____ 2 IN.
- G. (1) DRAIN _____ 2 1/2 IN.
- H. (1) MANUAL VENT _____ 1 1/2 IN.
- J. (1) VENT CONDENSOR _____ 12 FLG. IN.
- K. (1) OVERFLOW _____ 3 FLG. IN.
- L. (1) THERMOMETER _____ 1 IN.
- M. (1) RECIRCULATION _____ 3 FLG. IN.
- N. (1) CHEMICAL FEED _____ 1 1/2 IN.
- P. (1) MANWAY _____ 12 X 16 IN.
- Q. (2) LEVEL CONTROLS _____ 2 IN.
- R. (2) LEVEL ALARMS _____ 2 IN.
- S. (1) RELIEF VALVE _____ 4” 300# FLG. IN.
- T. (1) VACUUM BREAKER _____ 2 1/2 IN.
- U. (1) AUX. CONNECTION _____ 1 IN.



RATING & CAPACITIES			REVISIONS		
DA TYPE	_____	SPRAY	LTR.	DATE	BY
CAPACITY	_____	80,000 LBS/HR			
DA SECTION CAPACITY	_____	1,620 GALS.			
DA STORAGE CAPACITY	_____	10 MINUTES MIN.			
DESIGN PRESSURE	_____	50 PSIG STEAM			
DESIGN TEMP.	_____	400° F			
DEAERATION	_____	.005 CC/LITER			
OPERATING PRESSURE	_____	5 PSIG			
DRY WEIGHT.	_____	6,820 LBS			
OPERATING WEIGHT.	_____	15,546 LBS			
FLOODED WEIGHT.	_____	21,007 LBS			
THE ABOVE WEIGHTS DO NOT INCLUDE PUMPS, TRIM OR CONTROL PANEL.					
SHIPPING WEIGHT					
TANK (EMPTY) _____ LBS.					
STAND/PUMPS _____ LBS.					
NOTES 1. ALL CONTROLS MOUNTED AS PER SPECIFICATION SHEET. 2. SPECIFICATION SHEET TAKES PRIORITY OVER DRAWING. 3. ALL DIMENSIONS ARE ±1" UNLESS OTHERWISE NOTED. 4. DA TANK DESIGN CODE ASME SECTION VIII, DIV 1 5. DEAERATE ALL LOADS FROM 3%TO 100% OF RATED OUTLET CAPACITY 6. ELIMINATE TITRATABLE FREE CARBON DIOXIDE TO 0. 7. CORROSION ALLOWANCE 1/16". 8. TANK SEPARATED FROM STAND FOR SHIPMENT. 9. SUPERIOR BOILER, INC. RESERVES THE RIGHT TO FURNISH TRIM SHOWN OR AN EQUAL SUBSTITUTE AS DETERMINED BY SB.					
DRAWING NAME DEAERATOR, SPRAY					
MODEL NO: SS080T155–125					
SIZE: 1,620 GALLONS					
SCALE 1/48					
DRAWING No					