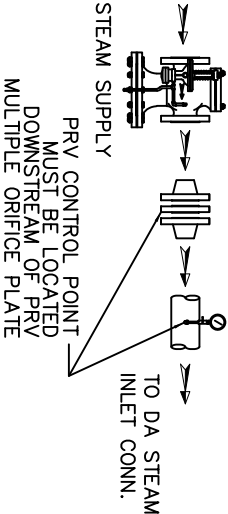
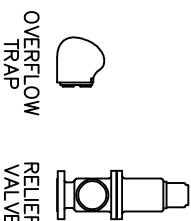


ITEMS TO SHIP LOOSE

STEAM INLET PRV w/NOISE SUPPRESSION
(IF REQUIRED)



- LOW TEMP. RETURN
(<180 °F)
- MEDIUM TEMP. RETURN
(180–227 °F)
- HIGH TEMP. RETURN
(>227 °F)

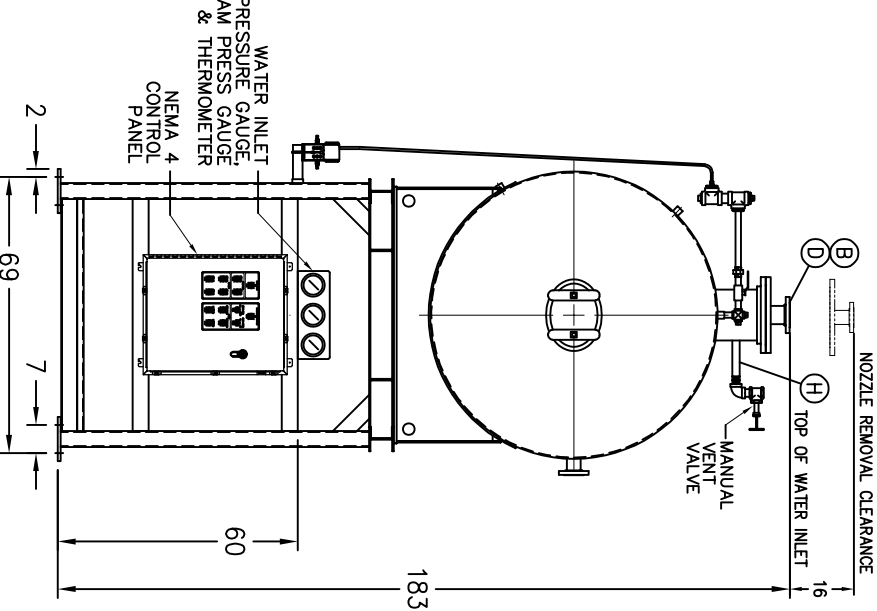
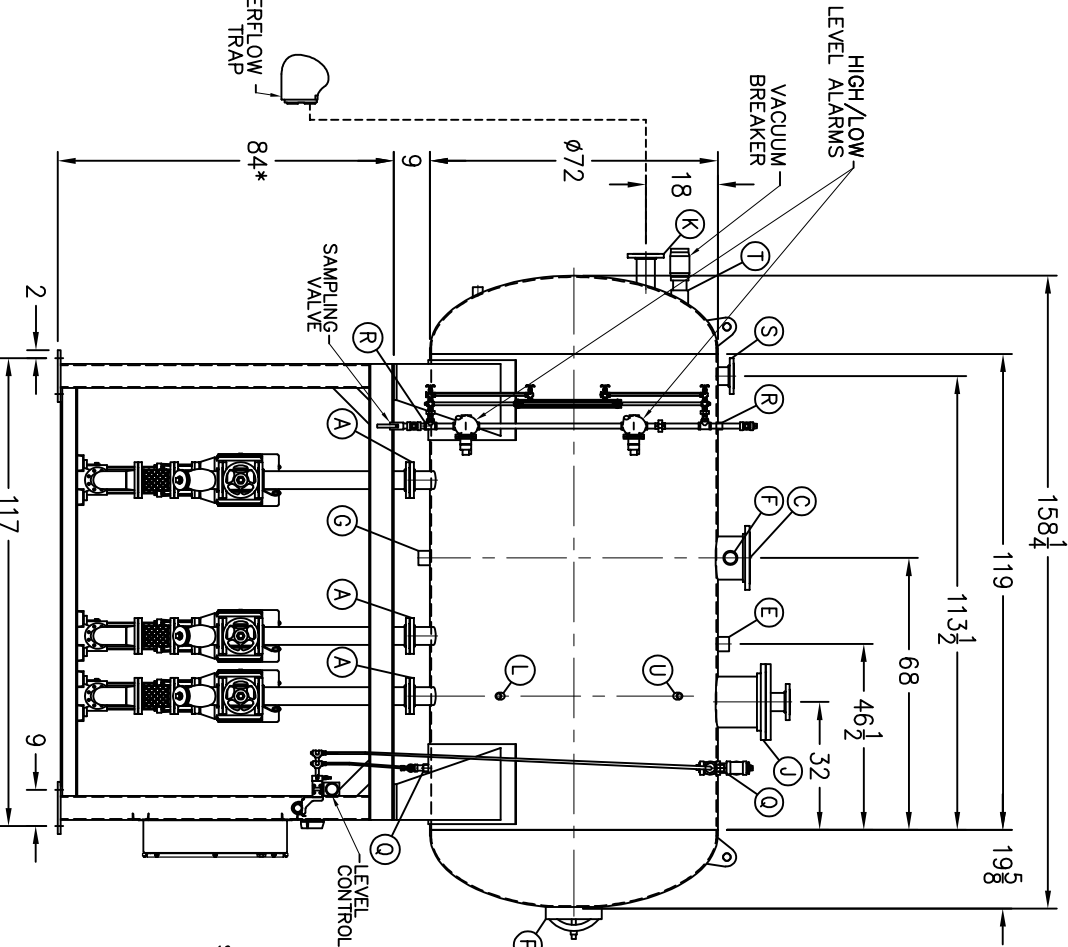
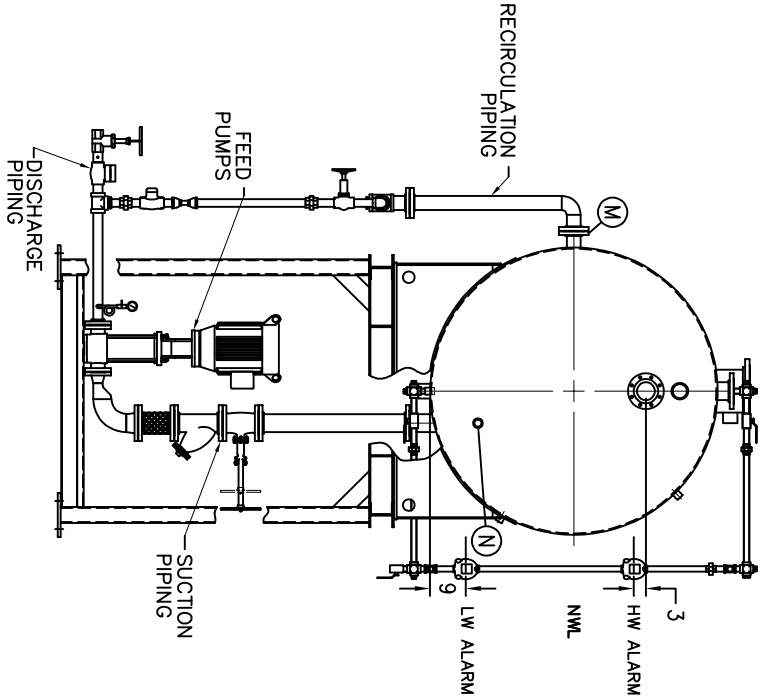


* STAND HEIGHT SUBJECT TO PUMP NPSH REQUIREMENTS
PUMPS SIZED TO SPECIFIC JOB REQUIREMENTS.
ALL COMPONENTS CONTINGENT UPON FINAL ENGINEERING.
PANEL SIZE MAY VARY DEPENDING ON JOB REQUIREMENTS

DEAERATOR TANK CONNECTIONS

- A. (3) PUMP SUCTION _____ 4 FLG. IN.
- B. (1) WATER INLET _____ 4 FLG. IN.
- C. (1) STEAM INLET _____ 10 FLG. IN.
- D. (1) LOW TEMP. RETURN _____ 4 FLG. IN.
- E. (1) MED TEMP RETURN _____ 2 1/2 IN.
- F. (1) HI TEMP RETURN _____ 2 1/2 IN.
- G. (1) DRAIN _____ 2 1/2 IN.
- H. (1) MANUAL VENT _____ 1 1/2 IN.
- J. (1) VENT CONDENSOR _____ 12 FLG. IN.
- K. (1) OVERFLOW _____ 4 FLG. IN.
- L. (1) THERMOMETER _____ 1 IN.
- M. (1) RECIRCULATION _____ 3 FLG. IN.
- N. (1) CHEMICAL FEED _____ 1 1/2 IN.
- P. (1) MANWAY _____ 12 X 16 IN.
- Q. (2) LEVEL CONTROLS _____ 1 IN.
- R. (2) LEVEL ALARMS _____ 1 IN.
- S. (1) RELIEF VALVE _____ 4" 300# FLG. IN.
- T. (1) VACUUM BREAKER _____ 3 IN.
- U. (1) AUX. CONNECTION _____ 1 IN.

CONNECTIONS NPT UNLESS NOTED, FLANGES 150# UNLESS NOTED



RATING & CAPACITIES	
DA TYPE _____	SPRAY
CAPACITY _____	90,000 LBS/HR
DA SECTION CAPACITY _____	1,950 GALS.
DA STORAGE CAPACITY _____	10.5 MINUTES MIN.
DESIGN PRESSURE _____	50 PSIG STEAM
DESIGN TEMP. _____	400° F
DEAERATION _____	.005 CC/LITER
OPERATING PRESSURE _____	5 PSIG
DRY WEIGHT. _____	7,546 LBS
OPERATING WEIGHT. _____	17,908 LBS
FLOODED WEIGHT. _____	24,388 LBS
THE ABOVE WEIGHTS DO NOT INCLUDE PUMPS, TRIM OR CONTROL PANEL.	
SHIPPING WEIGHT	
TANK (EMPTY) _____	5,752 LBS.
STAND/PUMPS _____	5,490 LBS.

LTR.	DATE	REVISIONS	BY
NOTES			
1. ALL CONTROLS MOUNTED AS PER SPECIFICATION SHEET.			
2. SPECIFICATION SHEET TAKES PRIORITY OVER DRAWING.			
3. ALL DIMENSIONS ARE ±1" UNLESS OTHERWISE NOTED.			
4. DA TANK DESIGN CODE ASME SECTION VIII, DIV 1			
5. DEAERATE ALL LOADS FROM 3%TO 100% OF RATED OUTLET CAPACITY			
6. ELIMINATE TITRATABLE FREE CARBON DIOXIDE TO 0.			
7. CORROSION ALLOWANCE 1/16"			
8. TANK SEPARATED FROM STAND FOR SHIPMENT.			
9. SUPERIOR BOILER, INC. RESERVES THE RIGHT TO FURNISH TRIM SHOWN OR AN EQUAL SUBSTITUTE AS DETERMINED BY SB.			

THIS DRAWING IS THE PROPERTY OF SUPERIOR BOILER AND SHALL NOT BE REPRODUCED IN PART OR IN WHOLE, AND NONE OF ITS INFORMATION SHALL BE REVEALED WITHOUT PERMISSION OR TO THE DETRIMENT OF THE OWNER, IT MUST BE RETURNED UPON REQUEST.

SOLD TO: _____

JOB: _____

DRAWN BY: _____

DATE _____

CHECKED BY: _____

DATE _____

DEAERATOR, SPRAY

MODEL NO: SS090T155–125

SIZE: 1,950 GALLONS

SCALE 1/48

DRAWING No _____

