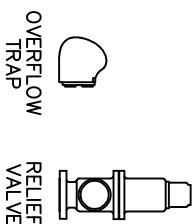
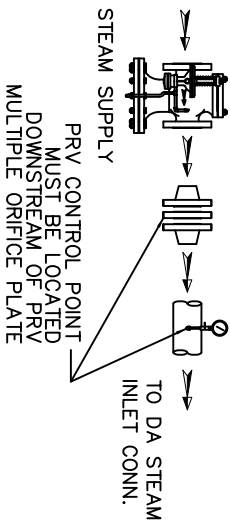


ITEMS TO SHIP LOOSE

STEAM INLET PRV w/NOISE SUPPRESSION  
(IF REQUIRED)



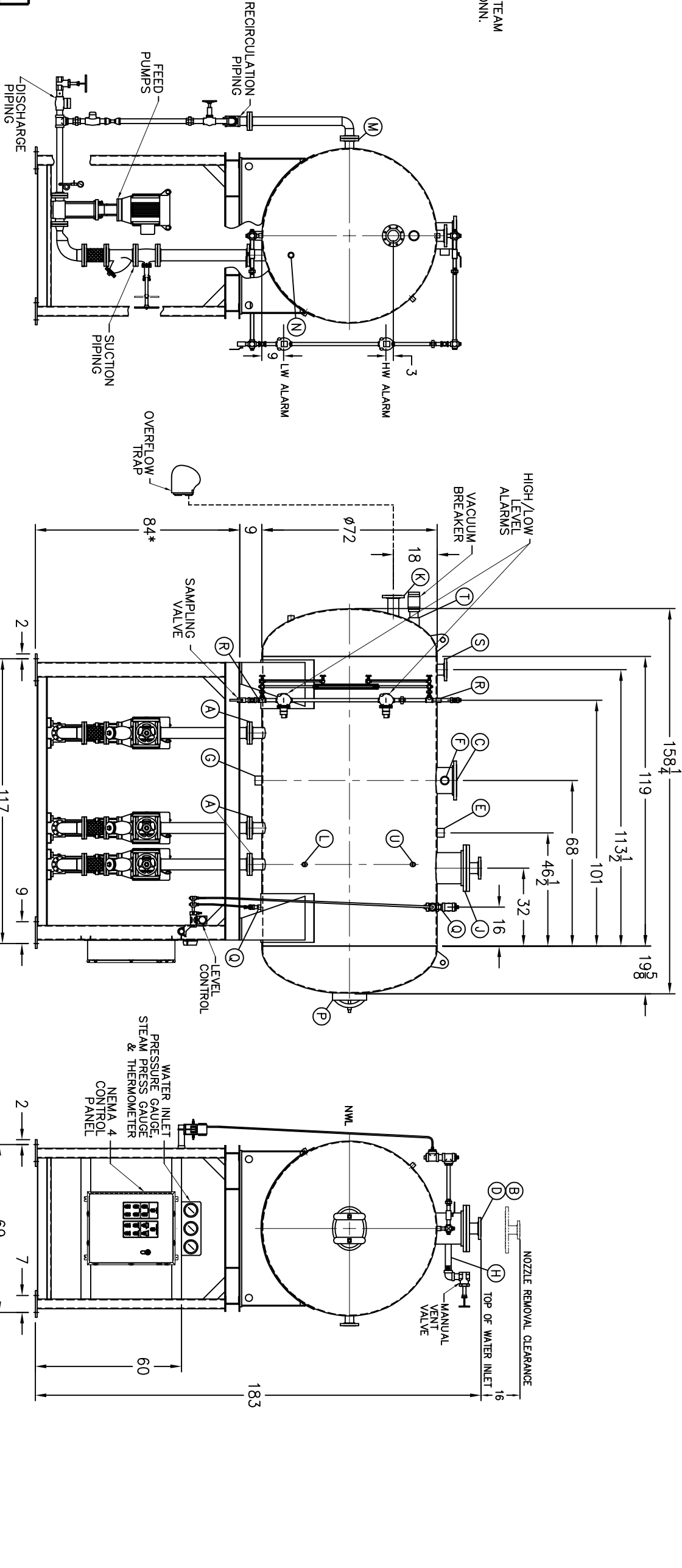
- LOW TEMP. RETURN  
(<180 °F)
- MEDIUM TEMP. RETURN  
(180–227 °F)
- HIGH TEMP. RETURN  
(>227 °F)

\* STAND HEIGHT SUBJECT TO PUMP NPSH REQUIREMENTS  
PUMPS SIZED TO SPECIFIC JOB REQUIREMENTS.  
ALL COMPONENTS CONTINGENT UPON FINAL ENGINEERING.  
PANEL SIZE MAY VARY DEPENDING ON JOB REQUIREMENTS

DEAERATOR TANK CONNECTIONS

- A. (4) PUMP SUCTION \_\_\_\_\_ 4 FLG. IN.
- B. (1) WATER INLET \_\_\_\_\_ 4 FLG. IN.
- C. (1) STEAM INLET \_\_\_\_\_ 10 FLG. IN.
- D. (1) LOW TEMP. RETURN \_\_\_\_\_ 4 FLG. IN.
- E. (1) MED TEMP RETURN \_\_\_\_\_ 2 1/2 IN.
- F. (1) HI TEMP RETURN \_\_\_\_\_ 2 1/2 IN.
- G. (1) DRAIN \_\_\_\_\_ 2 1/2 IN.
- H. (1) MANUAL VENT \_\_\_\_\_ 2 IN.
- J. (1) VENT CONDENSOR \_\_\_\_\_ 12 FLG. IN.
- K. (1) OVERFLOW \_\_\_\_\_ 4 FLG. IN.
- L. (1) THERMOMETER \_\_\_\_\_ 1 IN.
- M. (1) RECIRCULATION \_\_\_\_\_ 3 FLG. IN.
- N. (1) CHEMICAL FEED \_\_\_\_\_ 1 1/2 IN.
- P. (1) MANWAY \_\_\_\_\_ 12 X 16 IN.
- Q. (2) LEVEL CONTROLS \_\_\_\_\_ 1 IN.
- R. (2) LEVEL ALARMS \_\_\_\_\_ 1 IN.
- S. (1) RELIEF VALVE \_\_\_\_\_ 4” 300# FLG. IN.
- T. (1) VACUUM BREAKER \_\_\_\_\_ 3 IN.
- U. (1) AUX. CONNECTION \_\_\_\_\_ 1 IN.

CONNECTIONS NPT UNLESS NOTED, FLANGES 150# UNLESS NOTED



RATING & CAPACITIES		LTR.	DATE	REVISIONS	BY
DA TYPE	_____				
CAPACITY	_____				
DA SECTION CAPACITY	_____				
DA STORAGE CAPACITY	_____				
DESIGN PRESSURE	_____				
DESIGN TEMP.	_____				
DEAERATION	_____				
OPERATING PRESSURE	_____				
DRY WEIGHT.	_____				
OPERATING WEIGHT.	_____				
FLOODED WEIGHT.	_____				
THE ABOVE WEIGHTS DO NOT INCLUDE PUMPS, TRIM OR CONTROL PANEL.					
SHIPPING WEIGHT					
TANK (EMPTY)	_____				
STAND/PUMPS	_____				

<div>1. ALL CONTROLS MOUNTED AS PER SPECIFICATION SHEET.</div> <div>2. SPECIFICATION SHEET TAKES PRIORITY OVER DRAWING.</div> <div>3. ALL DIMENSIONS ARE ±1" UNLESS OTHERWISE NOTED.</div> <div>4. DA TANK DESIGN CODE ASME SECTION VIII, DIV 1</div> <div>5. DEARATE ALL LOADS FROM 32TO 100% OF RATED OUTLET CAPACITY</div> <div>6. ELIMINATE TITRATABLE FREE CARBON DIOXIDE TO 0.</div> <div>7. CORROSION ALLOWANCE 1/16".</div> <div>8. TANK SEPARATED FROM STAND FOR SHIPMENT.</div> <div>9. SUPERIOR BOILER, INC. RESERVES THE RIGHT TO FURNISH TRIM SHOWN OR AN EQUAL SUBSTITUTE AS DETERMINED BY SB.</div>					
NOTES					

THIS DRAWING IS THE PROPERTY OF SUPERIOR BOILER AND SHALL NOT BE REPRODUCED IN PART OR IN WHOLE, AND NONE OF ITS INFORMATION SHALL BE REVEALED WITHOUT PERMISSION OR TO THE DETRIMENT OF THE OWNER, IT MUST BE RETURNED UPON REQUEST.					
SOLD TO: _____					
JOB: _____					
DRAWN BY: _____		DATE _____	CHECKED BY: _____	DATE _____	
DRAWING NAME DEAERATOR, SPRAY					
MODEL NO: _____					
SIZE: _____					
SCALE 1/48		DRAWING No _____			
SUPERIOR BOILER					