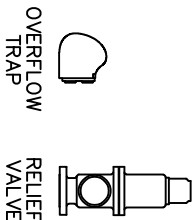
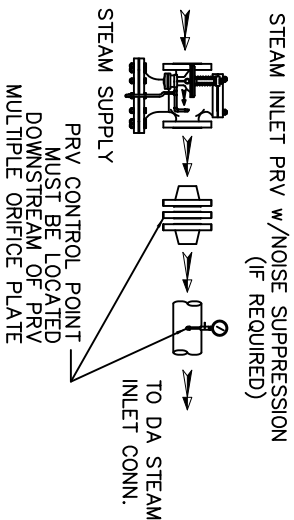


ITEMS TO SHIP LOOSE



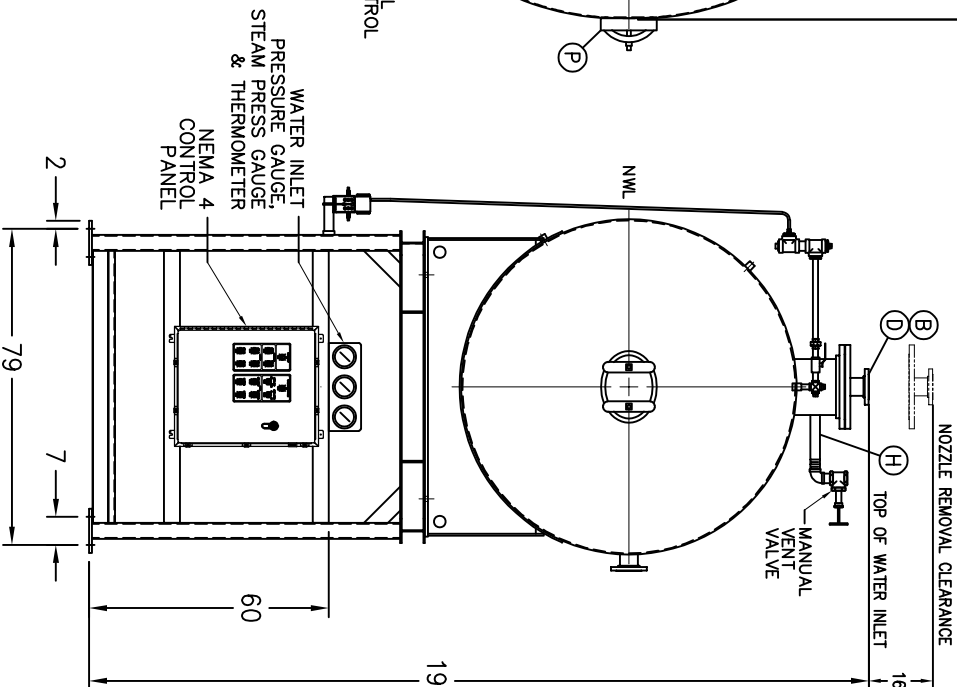
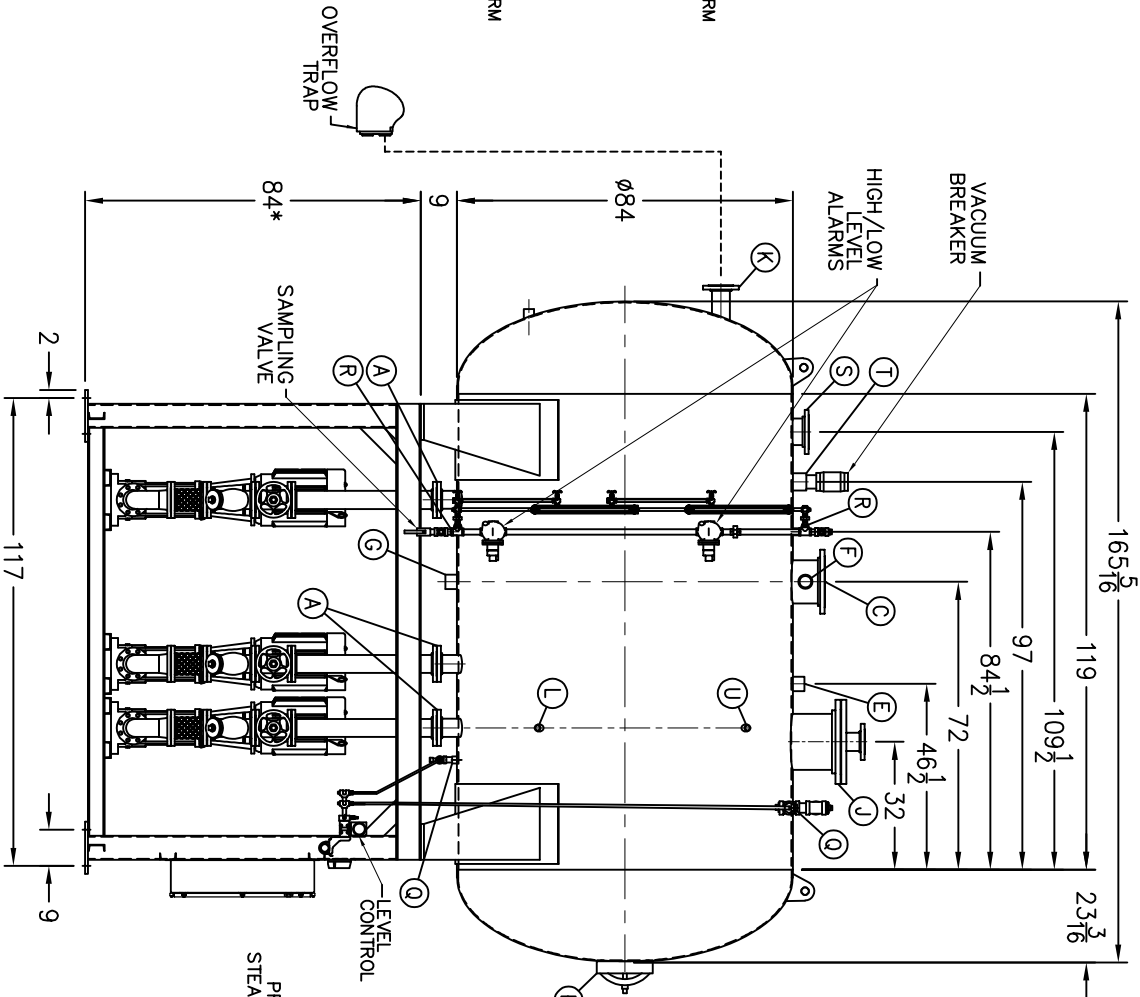
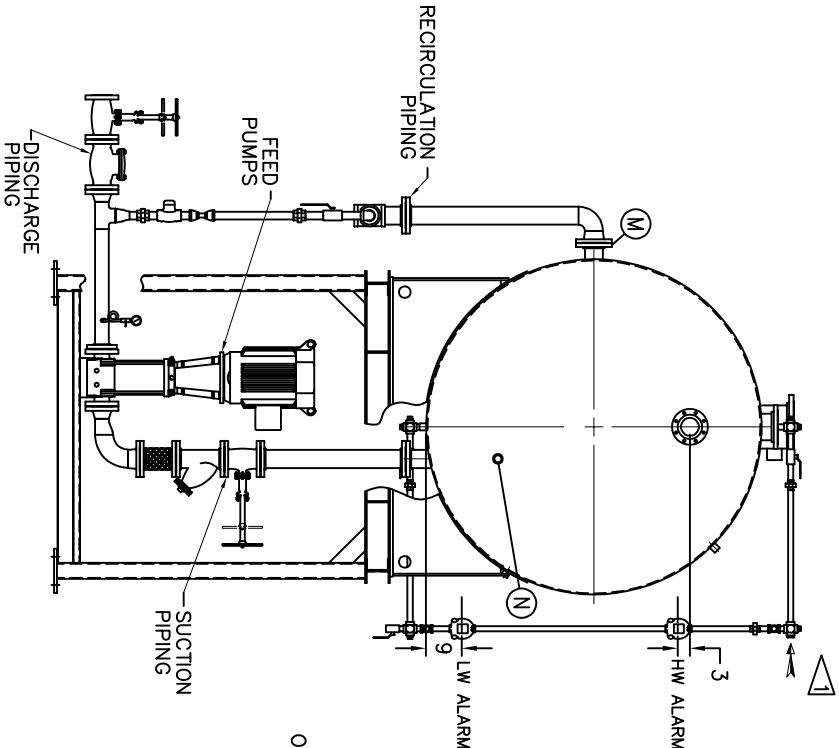
- LOW TEMP. RETURN  
(<180 °F)
- MEDIUM TEMP. RETURN  
(180–227 °F)
- HIGH TEMP. RETURN  
(>227 °F)

\* STAND HEIGHT SUBJECT TO PUMP NPSH REQUIREMENTS  
PUMPS SIZED TO SPECIFIC JOB REQUIREMENTS.  
ALL COMPONENTS CONTINGENT UPON FINAL ENGINEERING.  
PANEL SIZE MAY VARY DEPENDING ON JOB REQUIREMENTS

DEAERATOR TANK CONNECTIONS

- A. (4) PUMP SUCTION \_\_\_\_\_ 4 FLG. IN.
- B. (1) WATER INLET \_\_\_\_\_ 4 FLG. IN.
- C. (1) STEAM INLET \_\_\_\_\_ 10 FLG. IN.
- D. (1) LOW TEMP. RETURN \_\_\_\_\_ 4 FLG. IN.
- E. (1) MED TEMP RETURN \_\_\_\_\_ 2 1/2 IN.
- F. (1) HI TEMP RETURN \_\_\_\_\_ 2 1/2 IN.
- G. (1) DRAIN \_\_\_\_\_ 2 1/2 IN.
- H. (1) MANUAL VENT \_\_\_\_\_ 2 IN.
- J. (1) VENT CONDENSOR \_\_\_\_\_ 14 FLG. IN.
- K. (1) OVERFLOW \_\_\_\_\_ 4 FLG. IN.
- L. (1) THERMOMETER \_\_\_\_\_ 1 IN.
- M. (1) RECIRCULATION \_\_\_\_\_ 4 FLG. IN.
- N. (1) CHEMICAL FEED \_\_\_\_\_ 1 1/2 IN.
- P. (1) MANWAY \_\_\_\_\_ 12 X 16 IN.
- Q. (2) LEVEL CONTROLS \_\_\_\_\_ 2 IN.
- R. (2) LEVEL ALARMS \_\_\_\_\_ 2 IN.
- S. (1) RELIEF VALVE \_\_\_\_\_ 6" 300# FLG. IN.
- T. (1) VACUUM BREAKER \_\_\_\_\_ 3 IN.
- U. (1) AUX CONNECTION \_\_\_\_\_ 1 IN.

CONNECTIONS NPT UNLESS NOTED, FLANGES 150# UNLESS NOTED



| RATING & CAPACITIES  |                 | LTR. | DATE | REVISIONS | BY   |
|--|-----------------|------|------|-----------|------|
| DA TYPE  | SPRAY           |      |      |           |      |
| CAPACITY   | 125,000 LBS/HR  |      |      |           |      |
| DA SECTION CAPACITY  | 2,750 GALS.     |      |      |           |      |
| DA STORAGE CAPACITY  | 11 MINUTES MIN. |      |      |           |      |
| DESIGN PRESSURE  | 50 PSIG STEAM   |      |      |           |      |
| DESIGN TEMP.   | 400° F          |      |      |           |      |
| DEAERATION   | .005 CC/LITER   |      |      |           |      |
| OPERATING PRESSURE   | 5 PSIG          |      |      |           |      |
| DRY WEIGHT.  | 9,377 LBS       |      |      |           |      |
| OPERATING WEIGHT.  | 23,931 LBS      |      |      |           |      |
| FLOODED WEIGHT.  | 34,143 LBS      |      |      |           |      |
| THE ABOVE WEIGHTS DO NOT INCLUDE PUMPS, TRIM OR CONTROL PANEL. |                 |      |      |           |      |
| SHIPPING WEIGHT  |                 |      |      |           |      |
| TANK (EMPTY)   | 7,242           |      |      |           | LBS. |
| STAND/PUMPS  | 10,975          |      |      |           | LBS. |

NOTES

1. ALL CONTROLS MOUNTED AS PER SPECIFICATION SHEET.

2. SPECIFICATION SHEET TAKES PRIORITY OVER DRAWING.

3. ALL DIMENSIONS ARE ±1" UNLESS OTHERWISE NOTED.

4. DA TANK DESIGN CODE ASME SECTION VIII, DIV 1

5. DEAERATE ALL LOADS FROM 3%TO 100% OF RATED OUTLET CAPACITY

6. ELIMINATE TITRATABLE FREE CARBON DIOXIDE TO 0.

7. CORROSION ALLOWANCE 1/16"

8. TANK SEPARATED FROM STAND FOR SHIPMENT.

9. SUPERIOR BOILER, INC. RESERVES THE RIGHT TO FURNISH TRIM SHOWN OR AN EQUAL SUBSTITUTE AS DETERMINED BY SB.

DRAWING NAME

DEAERATOR, SPRAY

MODEL NO:

SS125Q155–125

SIZE:

2,750 GALLONS

SCALE

1/48

DRAWING No

THIS DRAWING IS THE PROPERTY OF SUPERIOR BOILER AND SHALL NOT BE REPRODUCED IN PART OR IN WHOLE, AND NONE OF ITS INFORMATION SHALL BE REVEALED WITHOUT PERMISSION OR TO THE DETRIMENT OF THE OWNER, IT MUST BE RETURNED UPON REQUEST.

SOLD TO:

SB

JOB:

SB

DRAWN BY:

DATE

CHECKED BY:

DATE

