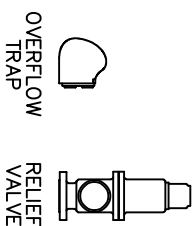
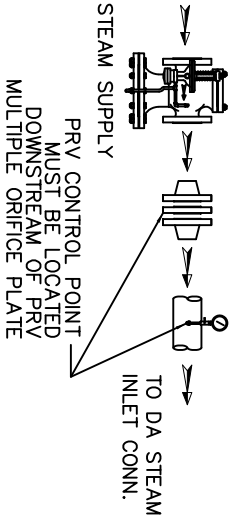


ITEMS TO SHIP LOOSE

STEAM INLET PRV w/NOISE SUPPRESSION
(IF REQUIRED)



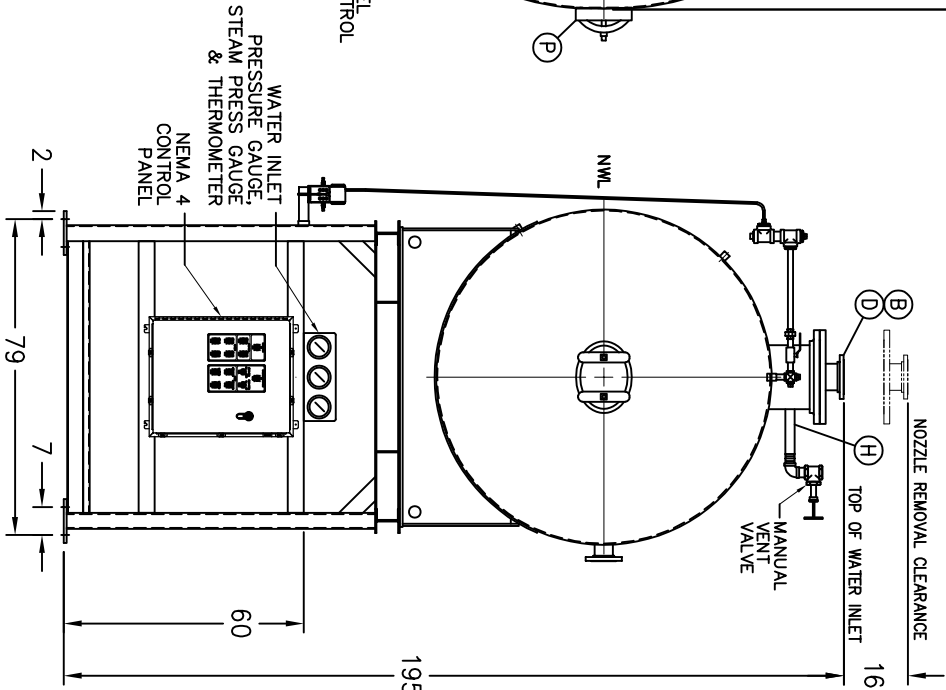
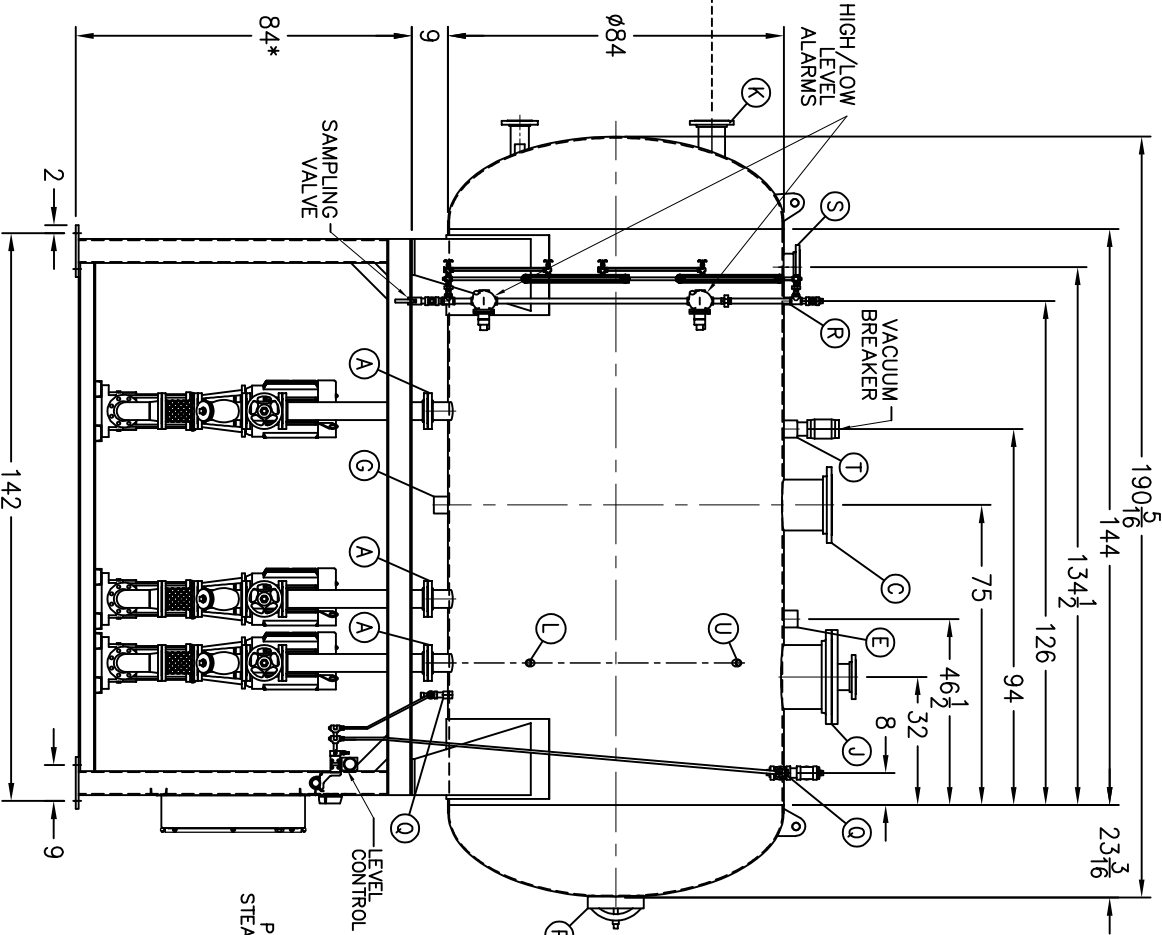
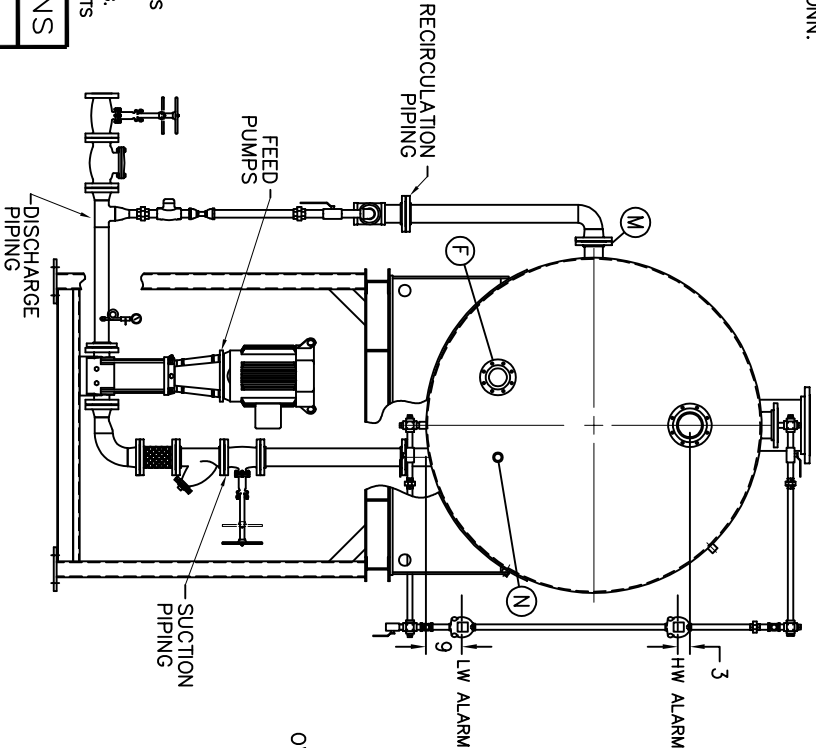
- (D) LOW TEMP. RETURN (<180 °F)
- (E) MEDIUM TEMP. RETURN (180–227 °F)
- (F) HIGH TEMP. RETURN (>227 °F)

* STAND HEIGHT SUBJECT TO PUMP NPSH REQUIREMENTS
PUMPS SIZED TO SPECIFIC JOB REQUIREMENTS.
ALL COMPONENTS CONTINGENT UPON FINAL ENGINEERING.
PANEL SIZE MAY VARY DEPENDING ON JOB REQUIREMENTS

DEAERATOR TANK CONNECTIONS

- A. (3) PUMP SUCTION _____ 4 FLG. IN.
- B. (1) WATER INLET _____ 6 FLG. IN.
- C. (1) STEAM INLET _____ 12 FLG. IN.
- D. (1) LOW TEMP. RETURN _____ 6 FLG. IN.
- E. (1) MED TEMP RETURN _____ 3 IN.
- F. (1) HI TEMP RETURN _____ 4 FLG. IN.
- G. (1) DRAIN _____ 3 IN.
- H. (1) MANUAL VENT _____ 2 IN.
- J. (1) VENT CONDENSOR _____ 16 FLG. IN.
- K. (1) OVERFLOW _____ 6 FLG. IN.
- L. (1) THERMOMETER _____ 1 IN.
- M. (1) RECIRCULATION _____ 4 FLG. IN.
- N. (1) CHEMICAL FEED _____ 1 1/2 IN.
- P. (1) MANWAY _____ 12 X 16 IN.
- Q. (2) LEVEL CONTROLS _____ 2 IN.
- R. (2) LEVEL ALARMS _____ 2 IN.
- S. (1) RELIEF VALVE _____ 6" 300# FLG. IN.
- T. (1) VACUUM BREAKER _____ 3 IN.
- U. (1) AUX CONNECTION _____ 1 IN.

CONNECTIONS NPT UNLESS NOTED, FLANGES 150# UNLESS NOTED



RATING & CAPACITIES		LTR.	DATE	REVISIONS	BY
DA TYPE _____	SPRAY				
CAPACITY _____	150,000 LBS/HR				
DA SECTION CAPACITY _____	3,300 GALS.				
DA STORAGE CAPACITY _____	11 MINUTES MIN.				
DESIGN PRESSURE _____	50 PSIG STEAM				
DESIGN TEMP. _____	400° F				
DEAERATION _____	.005 CC/LITER				
OPERATING PRESSURE _____	5 PSIG				
DRY WEIGHT. _____	10,643 LBS				
OPERATING WEIGHT. _____	27,627 LBS				
FLOODED WEIGHT. _____	39,551 LBS				
THE ABOVE WEIGHTS DO NOT INCLUDE PUMPS, TRIM OR CONTROL PANEL.					
SHIPPING WEIGHT					
TANK (EMPTY) _____	8,208 LBS.				
STAND/PUMPS _____	11,940 LBS.				

1. ALL CONTROLS MOUNTED AS PER SPECIFICATION SHEET.
2. SPECIFICATION SHEET TAKES PRIORITY OVER DRAWING.
3. ALL DIMENSIONS ARE ±1" UNLESS OTHERWISE NOTED.
4. DA TANK DESIGN CODE ASME SECTION VIII, DIV 1
5. DEAERATE ALL LOADS FROM 3% TO 100% OF RATED OUTLET CAPACITY
6. ELIMINATE TITRATABLE FREE CARBON DIOXIDE TO 0.
7. CORROSION ALLOWANCE 1/16"
8. TANK SEPARATED FROM STAND FOR SHIPMENT.
9. SUPERIOR BOILER, INC. RESERVES THE RIGHT TO FURNISH TRIM SHOWN OR AN EQUAL SUBSTITUTE AS DETERMINED BY SB.

NOTES

THIS DRAWING IS THE PROPERTY OF SUPERIOR BOILER AND SHALL NOT BE REPRODUCED IN PART OR IN WHOLE, AND NONE OF ITS INFORMATION SHALL BE REVEALED WITHOUT PERMISSION OR TO THE DETRIMENT OF THE OWNER, IT MUST BE RETURNED UPON REQUEST.		DRAWING NAME	
SOLD TO: _____	SB	DEAERATOR, SPRAY	
JOB: _____	SB	MODEL NO: SS150P155-125	
DRAWN BY: _____	DATE _____	CHECKED BY: _____	DATE _____
SIZE: 3,300 GALLONS		SCALE 1/48	
DRAWING No _____		SUPERIOR BOILER	