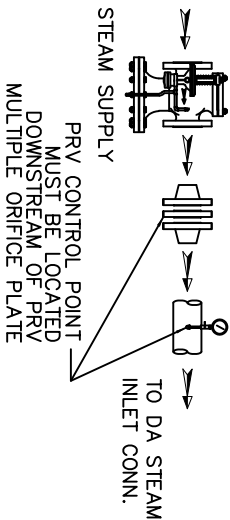


ITEMS TO SHIP LOOSE

STEAM INLET PRV w/NOISE SUPPRESSION
(IF REQUIRED)



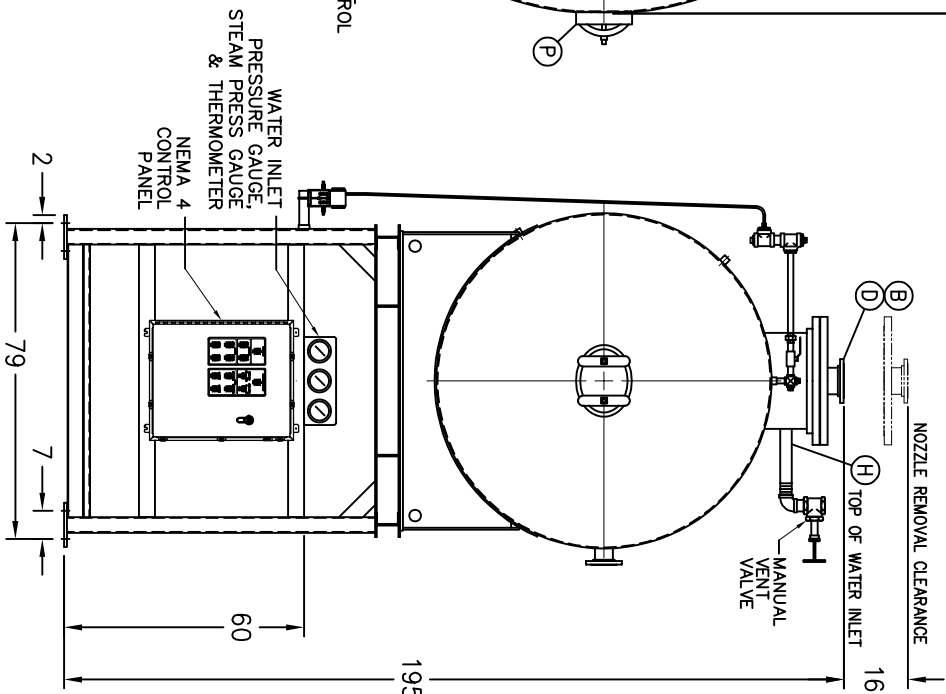
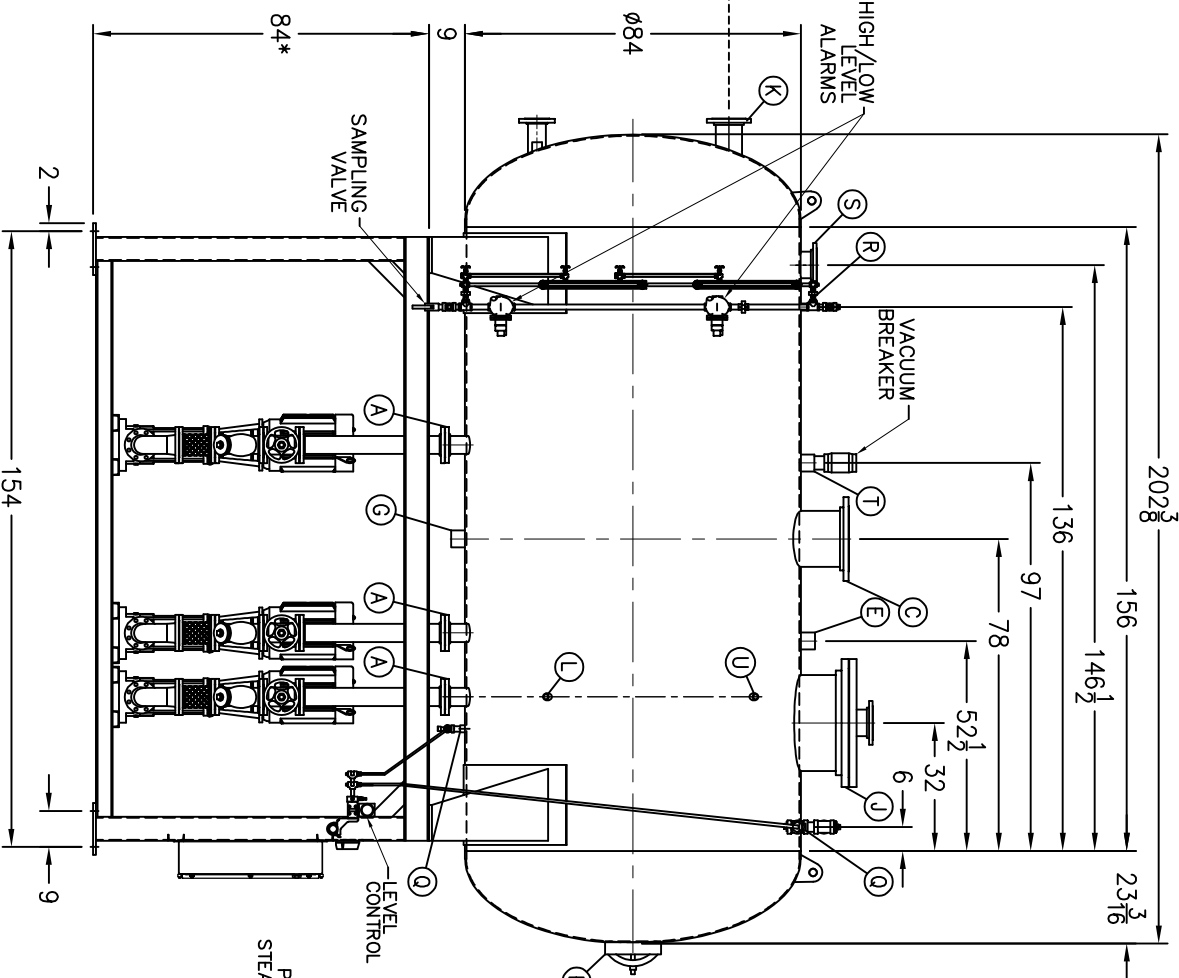
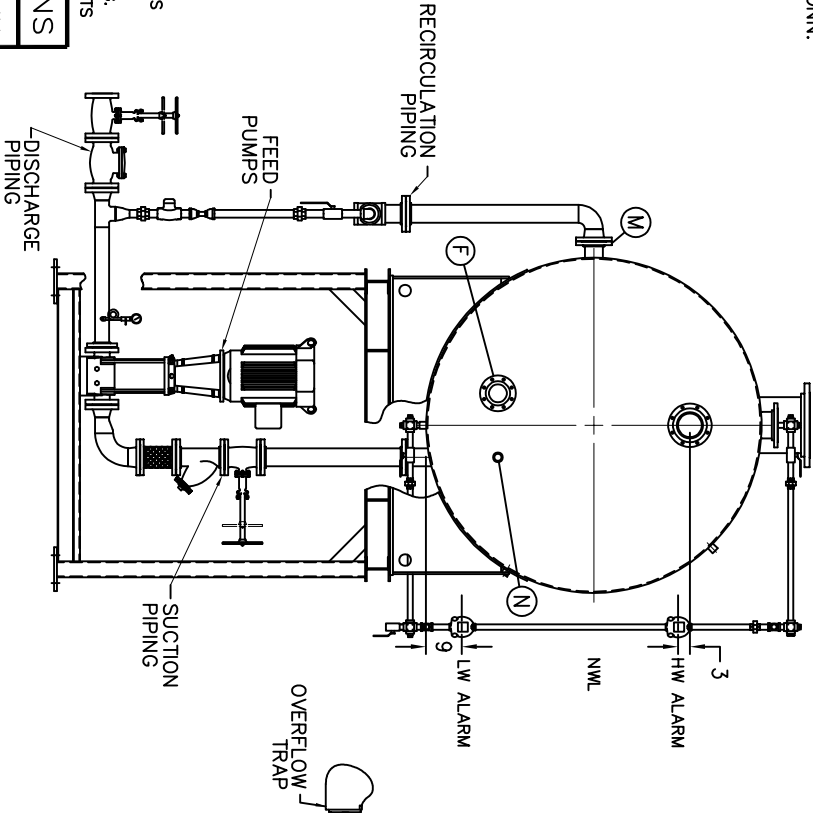
- (D) LOW TEMP. RETURN (<180 °F)
- (E) MEDIUM TEMP. RETURN (180–227 °F)
- (F) HIGH TEMP. RETURN (>227 °F)

* STAND HEIGHT SUBJECT TO PUMP NPSH REQUIREMENTS
PUMPS SIZED TO SPECIFIC JOB REQUIREMENTS.
ALL COMPONENTS CONTINGENT UPON FINAL ENGINEERING.
PANEL SIZE MAY VARY DEPENDING ON JOB REQUIREMENTS

DEAERATOR TANK CONNECTIONS

- A. (3) PUMP SUCTION _____ 4 FLG. IN.
- B. (1) WATER INLET _____ 6 FLG. IN.
- C. (1) STEAM INLET _____ 14 FLG. IN.
- D. (1) LOW TEMP. RETURN _____ 6 FLG. IN.
- E. (1) MED TEMP RETURN _____ 3 IN.
- F. (1) HI TEMP RETURN _____ 4 FLG. IN.
- G. (1) DRAIN _____ 3 IN.
- H. (1) MANUAL VENT _____ 2 1/2 IN.
- J. (1) VENT CONDENSOR _____ 24 FLG. IN.
- K. (1) OVERFLOW _____ 6 FLG. IN.
- L. (1) THERMOMETER _____ 1 IN.
- M. (1) RECIRCULATION _____ 4 FLG. IN.
- N. (1) CHEMICAL FEED _____ 1 1/2 IN.
- P. (1) MANWAY _____ 12 X 16 IN.
- Q. (2) LEVEL CONTROLS _____ 2 IN.
- R. (2) LEVEL ALARMS _____ 2 IN.
- S. (1) RELIEF VALVE _____ 6” 300# FLG. IN.
- T. (1) VACUUM BREAKER _____ 3 IN.
- U. (1) AUX CONNECTION _____ 1 IN.

CONNECTIONS NPT UNLESS NOTED, FLANGES 150# UNLESS NOTED



RATING & CAPACITIES		LTR.	DATE	REVISIONS		BY
DA TYPE _____ SPRAY						
CAPACITY _____ 175,000 LBS/HR						
DA SECTION CAPACITY _____ 3,550 GALS.						
DA STORAGE CAPACITY _____ 10 MINUTES MIN.						
DESIGN PRESSURE _____ 50 PSIG STEAM						
DESIGN TEMP. _____ 400° F						
DEAERATION _____ .005 CC/LITER						
OPERATING PRESSURE _____ 5 PSIG						
DRY WEIGHT. _____ 11,070 LBS						
OPERATING WEIGHT. _____ 29,231 LBS						
FLOODED WEIGHT. _____ 41,965 LBS						
THE ABOVE WEIGHTS DO NOT INCLUDE PUMPS, TRIM OR CONTROL PANEL.						
SHIPPING WEIGHT _____						
TANK (EMPTY) _____ 8,873 LBS.						
STAND/PUMPS _____ 12,610 LBS.						

NOTES

1. ALL CONTROLS MOUNTED AS PER SPECIFICATION SHEET.

2. SPECIFICATION SHEET TAKES PRIORITY OVER DRAWING.

3. ALL DIMENSIONS ARE ±1" UNLESS OTHERWISE NOTED.

4. DA TANK DESIGN CODE ASME SECTION VIII, DIV 1

5. DEAERATE ALL LOADS FROM 3% TO 100% OF RATED OUTLET CAPACITY

6. ELIMINATE TITRATABLE FREE CARBON DIOXIDE TO 0.

7. CORROSION ALLOWANCE 1/16"

8. TANK SEPARATED FROM STAND FOR SHIPMENT.

9. SUPERIOR BOILER, INC. RESERVES THE RIGHT TO FURNISH TRIM SHOWN OR AN EQUAL SUBSTITUTE AS DETERMINED BY SB.

THIS DRAWING IS THE PROPERTY OF SUPERIOR BOILER AND SHALL NOT BE REPRODUCED IN PART OR IN WHOLE, AND NONE OF ITS INFORMATION SHALL BE REVEALED WITHOUT PERMISSION OR TO THE DETRIMENT OF THE OWNER, IT MUST BE RETURNED UPON REQUEST.

SOLD TO: _____

SB

JOB: _____

SB

DRAWN BY: _____

DATE _____

CHECKED BY: _____

DATE _____

DRAWING NAME

DEAERATOR, SPRAY

MODEL NO: _____

SS175P155-125

SIZE: _____

3,550 GALLONS

SCALE

1/48

DRAWING No