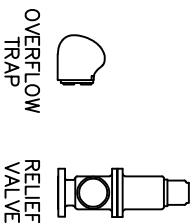
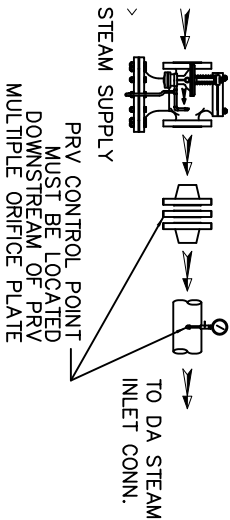


ITEMS TO SHIP LOOSE

STEAM INLET PRV w/NOISE SUPPRESSION
(IF REQUIRED)



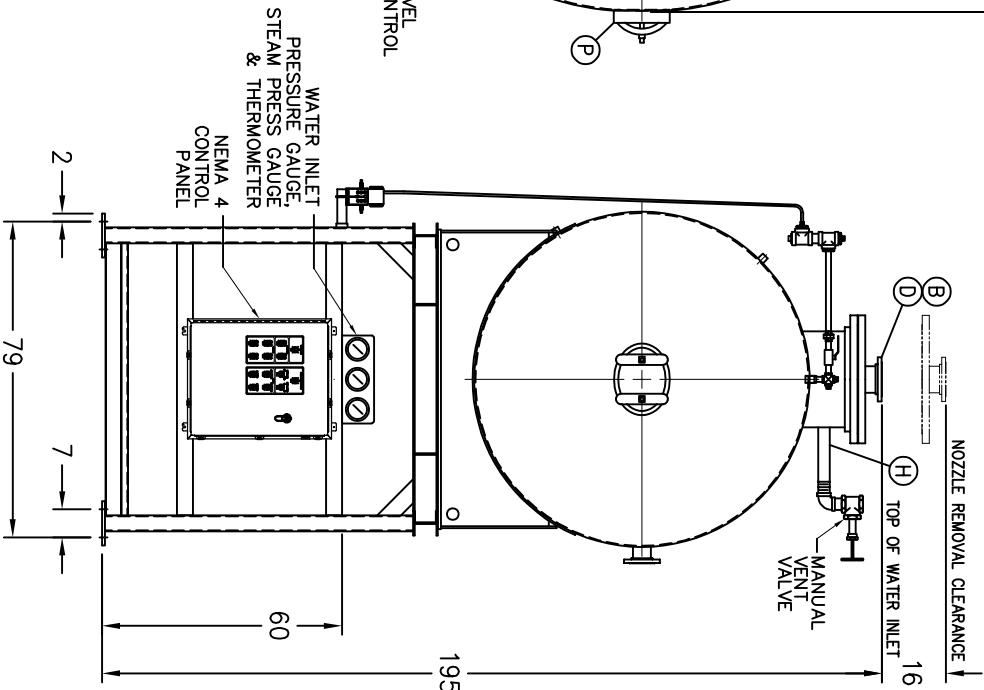
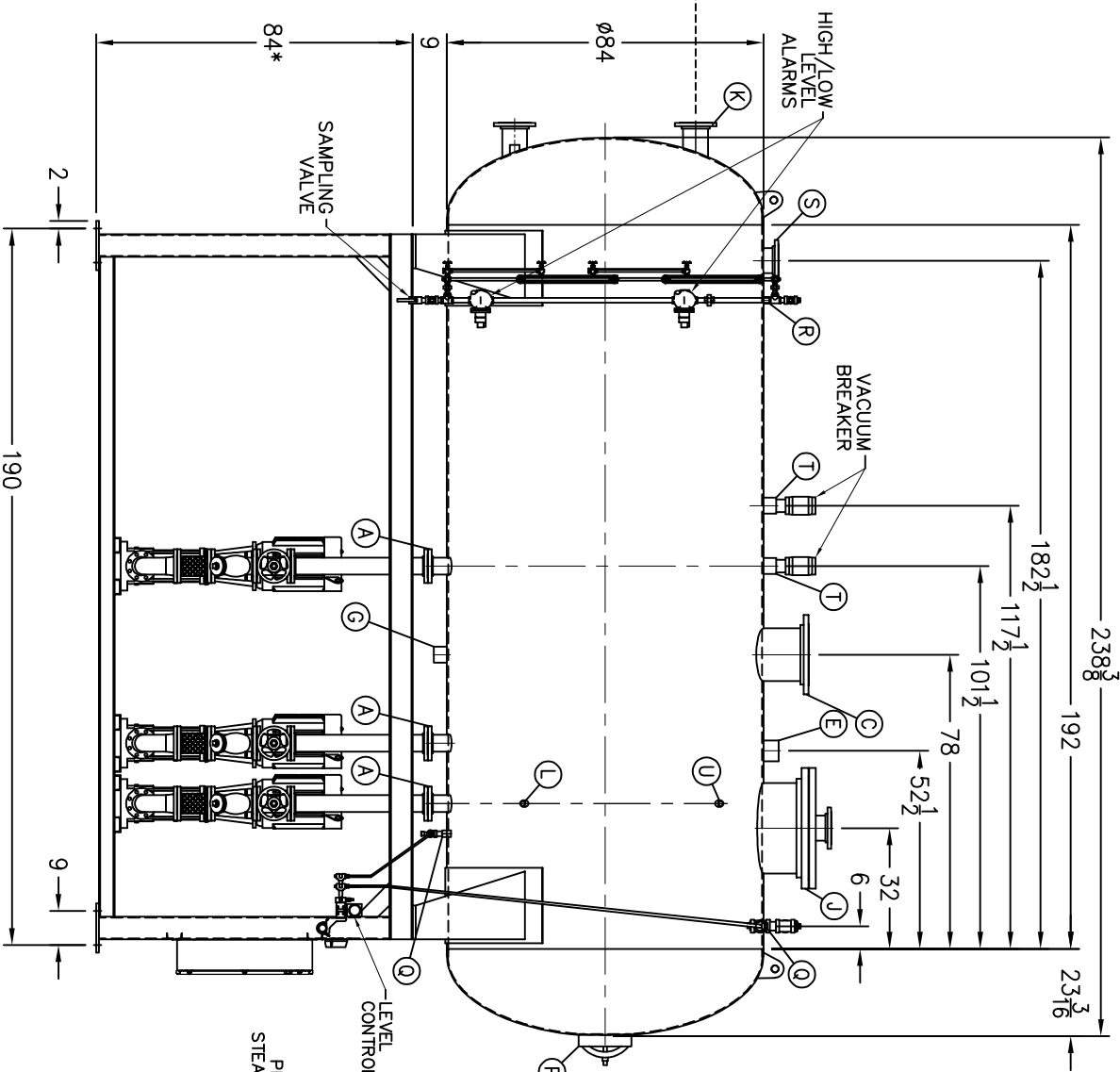
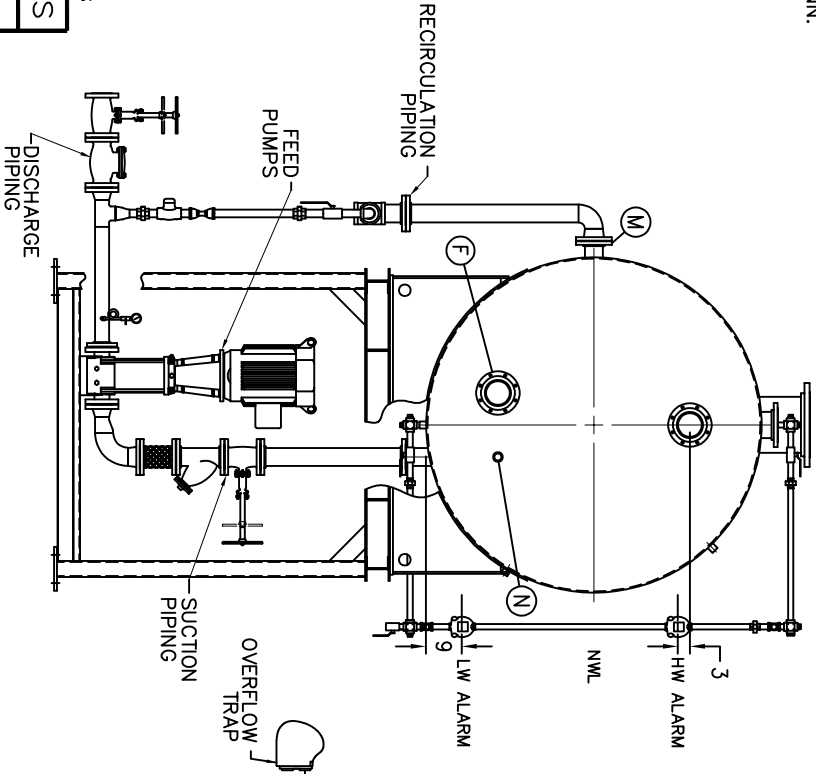
- D LOW TEMP. RETURN (<180 °F)
- E MEDIUM TEMP. RETURN (180–227 °F)
- F HIGH TEMP. RETURN (>227 °F)

* STAND HEIGHT SUBJECT TO PUMP NPSH REQUIREMENTS
PUMPS SIZED TO SPECIFIC JOB REQUIREMENTS.
ALL COMPONENTS CONTINGENT UPON FINAL ENGINEERING.
PANEL SIZE MAY VARY DEPENDING ON JOB REQUIREMENTS

DEAERATOR TANK CONNECTIONS

- A. (3) PUMP SUCTION 4 FLG. IN.
- B. (1) WATER INLET 6 FLG. IN.
- C. (1) STEAM INLET 14 FLG. IN.
- D. (1) LOW TEMP. RETURN 6 FLG. IN.
- E. (1) MED TEMP RETURN 4 IN.
- F. (1) HI TEMP RETURN 4 FLG. IN.
- G. (1) DRAIN 3 IN.
- H. (1) MANUAL VENT 2 1/2 IN.
- J. (1) VENT CONDENSOR 24 FLG. IN.
- K. (1) OVERFLOW 6 FLG. IN.
- L. (1) THERMOMETER 1 IN.
- M. (1) RECIRCULATION 4 FLG. IN.
- N. (1) CHEMICAL FEED 1 1/2 IN.
- P. (1) MANWAY 12 X 16 IN.
- Q. (2) LEVEL CONTROLS 2 IN.
- R. (2) LEVEL ALARMS 2 IN.
- S. (1) RELIEF VALVE 6" 300# FLG. IN.
- T. (2) VACUUM BREAKER 3 IN.
- U. (1) AUX CONNECTION 1 IN.

CONNECTIONS NPT UNLESS NOTED, FLANGES 150# UNLESS NOTED



RATING & CAPACITIES		LTR.	DATE	REVISIONS	BY
DA TYPE _____ SPRAY					
CAPACITY _____ 200,000 LBS/HR					
DA SECTION CAPACITY _____ 4,400 GALS.					
DA STORAGE CAPACITY _____ 11 MINUTES MIN.					
DESIGN PRESSURE _____ 50 PSIG STEAM					
DESIGN TEMP. _____ 400° F					
DEAERATION _____ .005 CC/LITER					
OPERATING PRESSURE _____ 5 PSIG					
DRY WEIGHT. _____ 12,941 LBS					
OPERATING WEIGHT. _____ 34,601 LBS					
FLOODED WEIGHT. _____ 49,790 LBS					
THE ABOVE WEIGHTS DO NOT INCLUDE PUMPS, TRIM OR CONTROL PANEL.					
SHIPPING WEIGHT _____					
TANK (EMPTY) _____ 9,898 LBS.					
STAND/PUMPS _____ 13,630 LBS.					

NOTES

1. ALL CONTROLS MOUNTED AS PER SPECIFICATION SHEET.

2. SPECIFICATION SHEET TAKES PRIORITY OVER DRAWING.

3. ALL DIMENSIONS ARE ±1" UNLESS OTHERWISE NOTED.

4. DA TANK DESIGN CODE ASME SECTION VIII, DIV 1

5. DEAERATE ALL LOADS FROM 3%TO 100% OF RATED OUTLET CAPACITY

6. ELIMINATE TITRATABLE FREE CARBON DIOXIDE TO 0.

7. CORROSION ALLOWANCE 1/16"

8. TANK SEPARATED FROM STAND FOR SHIPMENT.

9. SUPERIOR BOILER, INC. RESERVES THE RIGHT TO FURNISH TRIM SHOWN OR AN EQUAL SUBSTITUTE AS DETERMINED BY SB.

THIS DRAWING IS THE PROPERTY OF SUPERIOR BOILER AND SHALL NOT BE REPRODUCED IN PART OR IN WHOLE, AND NONE OF ITS INFORMATION SHALL BE REVEALED WITHOUT PERMISSION OR TO THE DETRIMENT OF THE OWNER, IT MUST BE RETURNED UPON REQUEST.

SOLD TO: SB

JOB: SB

DRAWN BY: DATE

CHECKED BY: DATE

DRAWING NAME

DEAERATOR, SPRAY

MODEL NO: SS200P155-125

SIZE: 4,400 GALLONS

SCALE 1/48

DRAWING No

SUPERIOR

BOILER