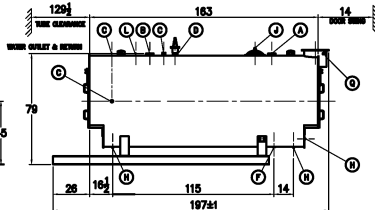
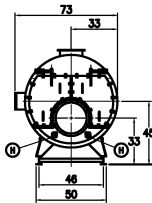


BOILER / BACK



BOILER CONNECTIONS		RATINGS & CAPACITIES		LBN DATE		REVISION		BY	REPRESENTATIVE
A.(1) WATER OUTLET	6" NPT	HORSEPOWER	100						?
B.(1) WATER RETURN	4" NPT	DESIGN PRESSURE	30 PSIG WATER						
C.(4) LUGS	1" NPT	DESIGN TEMPERATURE	220°F						
D.(1) SAFETY VALVE	2" NPT	GROSS OUTPUT	3348 MBH						
E.() SAFETY VALVE		HEAT RELEASE (FURNACE ONLY)	155000 BTU/200°F						
F.(1) BOILER DRAIN	1 1/2" NPT	RATED INPUT	4184 MBH						
G.() WATER CIRCULATION		HEATING SURFACE (ASME)	508 SqFt						
H.(5) HANDHOLE	5" x 6"	FURNACE HEATING SURFACE	85.42 SqFt						
J.(1) MANNWAY	12" x 16"	FURNACE VOLUME							
K.(1) CLEANOUT	17" ID	FURNACE ONLY	27.00 QdF						
L.(1) AIR VENT	1 1/2" NPT	TURNAROUND VOLUME	18.64 QdF						
M.(1) LOW FIRE HOLD	1/2" NPT								
N.(3) AQUASTAT	1/2" NPT								
P.(2) AQUASTAT	1" NPT								
Q.(2) STACK TEMP	1/2" NPT								
R.()									
S.()									

NOTES		SUPER SEMINOLE BOILER		CHECKED BY	DATE	THIS DRAWING IS THE PROPERTY OF SUPERIOR BOILER WORKS & SHALL NOT BE REPRODUCED IN PART OR IN WHOLE, & NONE OF ITS INFORMATION SHALL BE REVEALED WITHOUT PERMISSION OR TO THE DETRIMENT OF THE OWNER. IT MUST BE RETURNED UPON REQUEST.
1. ALL CONTROLS MOUNTED AS PER SPECIFICATION SHEET.				?		
2. SPECIFICATION SHEET TAKES PRIORITY OVER R & D SHEET.				DRAWN BY		
3. BOILER DESIGN CODE ASME SECTION IV.						
4. BOILER INSULATED WITH 2" OF INSULATION WITH 22 GAUGE STEEL JACKET.						
5. ALL DIMENSIONS ARE ±1/2" UNLESS OTHERWISE NOTED.						

SCALE	1/48	DRAWING No	?
-------	------	------------	---