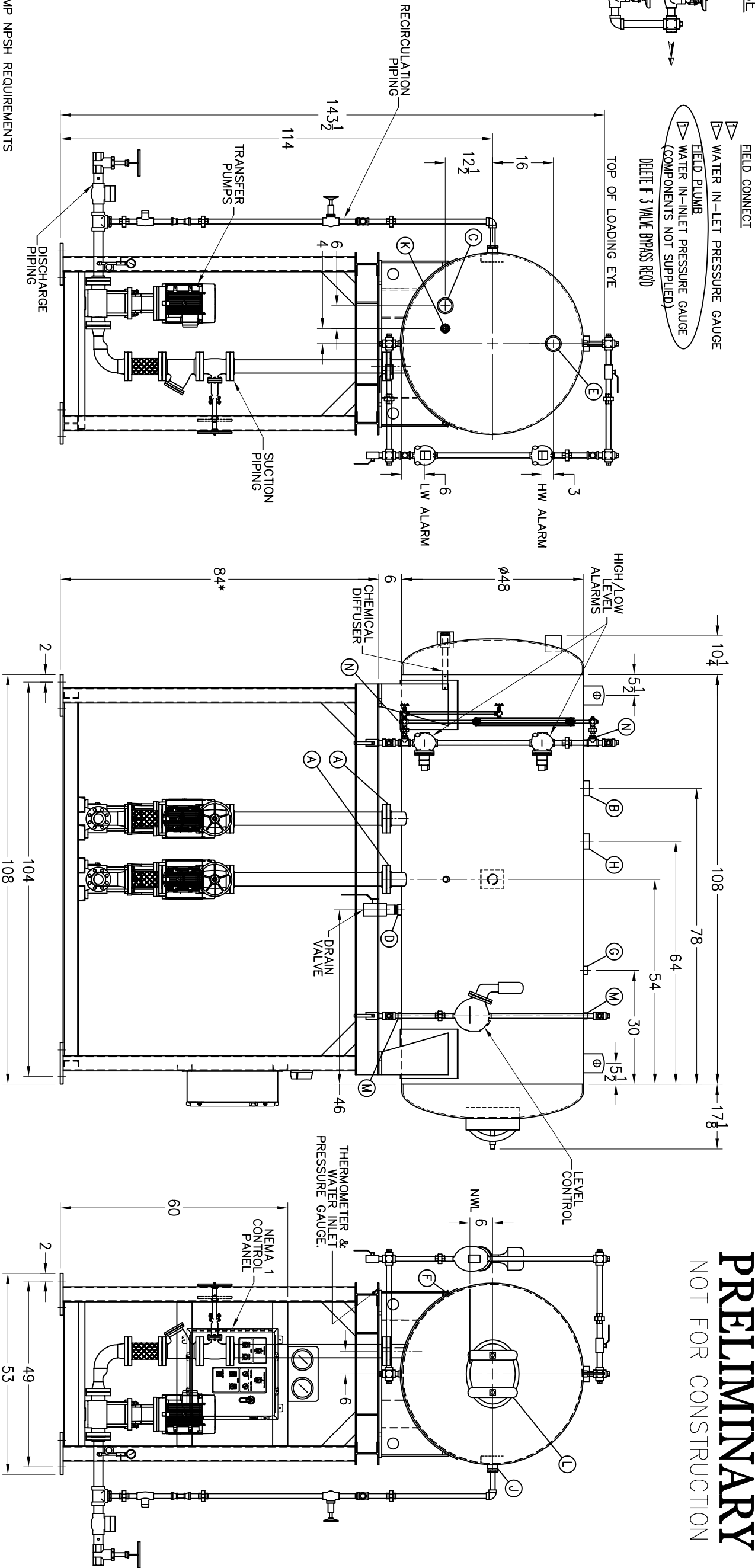
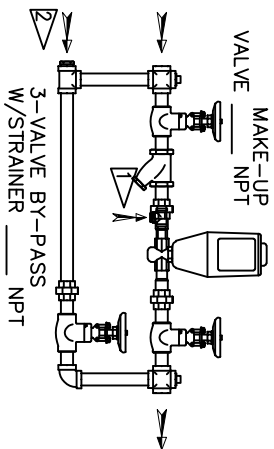


ITEMS TO SHIP LOOSE



PRELIMINARY

NOT FOR CONSTRUCTION

* STAND HEIGHT SUBJECT TO PUMP NPSH REQUIREMENTS

TANK CONNECTIONS (NPT UNLESS NOTED)		PUMP DATA		LEVEL CONTROL		REVISIONS		NOTES	
A. (2) PUMP SUCTION	3 FLG. IN.	MAKE	GRUNDOS	MAKE	M & M	LTR.	DATE	CHANGE	BY
B. (1) LO PRESS RETURN	3 IN.	MODEL	CR15-3K	MODEL	150S				
C. (1) HI TEMP RETURN	3 IN.	DISCHARGE	2 250#	HIGH/LOW ALARMS	A	XXX	XXX		xxx
D. (1) DRAIN	2 IN.	SUCTION	2 250#	MAKE	M & M				
E. (1) OVERFLOW	3 IN.	CAPACITY	56.6 GPM	MODEL	64				
F. (1) THERMOMETER	3/4 IN.	AT	50 PSIG	MODEL	64				
G. (1) MAKE UP WATER	1 1/2 IN.	MOTOR DATA		THERMOMETER		FEED WATER VALVE			
H. (1) VENT	3 IN.	H.P.	7 1/2						
J. (2) RECIRCULATION	2 IN.	RPM	3500	MAKE	TREIRICE				
K. (1) CHEM. FEED	1 IN.	TYPE	TEFC	MODEL	V-80342-120-B01-15'				
L. (1) MANWAY	12 X 16 IN.	VOLTAGE	460/60/3	WATER INLET PRESS.					
M. (2) LEVEL CONTROLS	1 IN.	SHIPPING WEIGHT							
N. (2) LEVEL ALARMS	1 IN.	TANK (EMPTY STAND/PUMPS)	2,625 LBS. 2,308 LBS.	MAKE	WIKA				
P. ()	IN.	MODEL	232.34	MAKE	ASCOCO				
				MODEL	8310G				
				SIZE	1/2 IN.				
		Superior Boiler Works, Inc. reserves the right to furnish trim shown or an equal substitute as determined by Superior Boiler, Inc.							
		1. ALL CONTROLS MOUNTED AS PER SPECIFICATION SHEET. 2. SPECIFICATION SHEET TAKES PRIORITY OVER DRAWING. 3. SURGE TANK DESIGN NON-CODE. 4. ALL DIMENSIONS ARE ±1" UNLESS OTHERWISE NOTED. 5. THIS IS AN ATMOSPHERIC SURGE TANK.							
		SURGE TANK SYSTEM							
		MODEL NO: S 0800							
		SIZE: 800 GALLONS							
		SCALE 1/30							
		DRAWING No X							