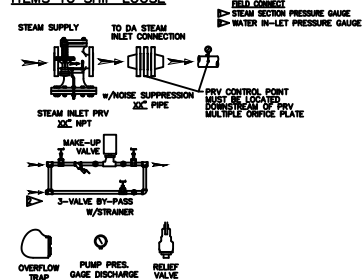


ITEMS TO SHIP LOOSE

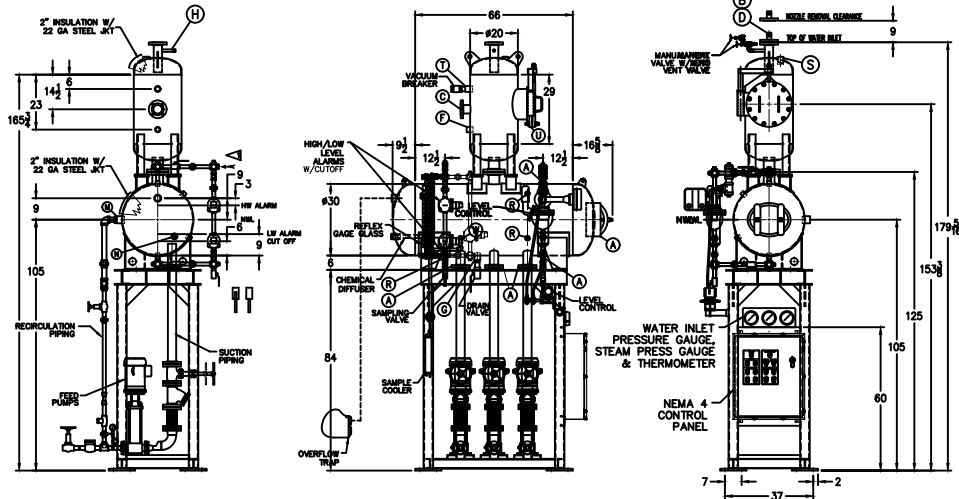



- (D) LOW TEMP. RETURN
($<180^{\circ}\text{F}$)
- (F) HIGH TEMP. RETURN
($>180^{\circ}\text{F}$)

* STAND HEIGHT SUBJECT TO PUMP NPSH REQUIREMENTS
ALL COMPONENTS CONTINGENT UPON FINAL ENGINEERING.
PANEL SIZE MAY VARY DEPENDING ON JOB REQUIREMENTS

DEAERATOR TANK CONNECTIONS

- | | | |
|----|----------------------|-------------|
| A. | (3) PUMP SUCTION | 3 FLG. IN. |
| B. | (1) WATER INLET | 1 1/2 IN. |
| C. | (1) STEAM INLET | 3 FLG. IN. |
| D. | (1) LOW TEMP. RETURN | 1 1/2 IN. |
| E. | (1) MED TEMP. RETURN | IN. |
| F. | (1) HI TEMP RETURN | 1 1/4 IN. |
| G. | (1) DRAIN | 1 1/2 IN. |
| H. | (1) MANUAL VENT | 3/4 IN. |
| I. | (1) INERT CONDENSER | 3 FLG. IN. |
| J. | (1) OVERFLOW | 1 1/2 IN. |
| K. | (1) THERMOMETER | 1 IN. |
| L. | (1) RECIRCULATION | 2 IN. |
| M. | (1) CHEMICAL FEED | 1 1/2 IN. |
| P. | (1) MANWAY | 12 X 16 IN. |
| Q. | (2) LEVEL CONTROLS | 1 IN. |
| R. | (2) LEVEL ALARMS | 1 IN. |
| S. | (1) RELIEF VALVE | 2 IN. |
| T. | (1) VACUUM BREAKER | 1 1/2 IN. |
| U. | (1) TRAY BOQ ACCESS | 12 FLG. IN. |
| V. | (2) DOWNCOMER | 4 FLG. IN. |
| W. | (1) IMPT. COOLER | 1 IN. |
- CONNECTIONS 1/4" UNLESS NOTED, FLOWS 1500 UNLESS NOTED



RATING & CAPACITIES		LTR.	DATE	REVISIONS		BY	THIS DRAWING IS THE PROPERTY OF SUPERIOR BOILER AND SHALL NOT BE REPRODUCED IN PART OR IN WHOLE, AND NONE OF ITS INFORMATION SHALL BE REVEALED WITHOUT PERMISSION OR TO THE DETRIMENT OF THE OWNER. IT MUST BE RETURNED UPON REQUEST.	
DA TYPE	TRAY	A	<input checked="" type="checkbox"/>	DESCRIPTION		<input checked="" type="checkbox"/>	SCALE	XXX
CAPACITY	5,000 LBS./HR.						DATE	XXX
DA SECTION CAPACITY	100 GALS.						DRAWN BY:	XX
DA STORAGE CAPACITY	10 MINUTES MIN.						DATE	<input checked="" type="checkbox"/>
DESIGN PRESSURE	50 PSIG STEAM						CHECKED BY:	DATE
DESIGN TEMP.	400° F						DRAWING NAME	
DEAERATION	.005 CC/LITER						DEAERATOR, TRAY	
OPERATING PRESSURE	5 PSIG	<p align="center">NOTES</p> <p>1. ALL CONTROLS MOUNTED AS PER SPECIFICATION SHEET.</p> <p>2. SPECIFICATION SHEET TAKES PRIORITY OVER DRAWING.</p> <p>3. ALL DIMENSIONS ARE $\frac{1}{4}"$ UNLESS OTHERWISE NOTED.</p> <p>4. DA TANK DESIGN CODE: ASME SECTION VIII, DIV. 1</p> <p>5. DEAERATE ALL LOADS FROM SATO TOWNS OF RATED OUTLET CAPACITY</p> <p>6. ELIMINATE TITRATABLE FREE CARBON DIOXIDE TO 0.</p> <p>7. CORROSION ALLOWANCE: 1/16"</p> <p>8. TANK SEPARATED FROM STAND FOR SHIPMENT.</p> <p>9. SUPERIOR BOILER, INC. RESERVES THE RIGHT TO FURNISH TRIM SHIPMENT OF AN EQUAL SIZE.</p>						
DRY WEIGHT	7,777 LBS.							
OPERATING WEIGHT	77,700 LBS.							
FLOODED WEIGHT	77,777 LBS.							
THE ABOVE WEIGHTS DO NOT INCLUDE PUMPS, TRIM OR CONTROL PANEL								
SHIPPING WEIGHT								
TANK (EMPTY)	HORIZ. 9.9?? / VERT. 9.9?? LBS.							
STAND/PUMPS	9.9?? / LBS.							
							SCALE	1/36
							DRAWING No	X