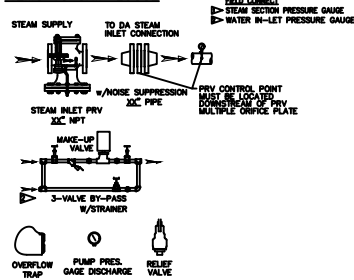


ITEMS TO SHIP LOOSE



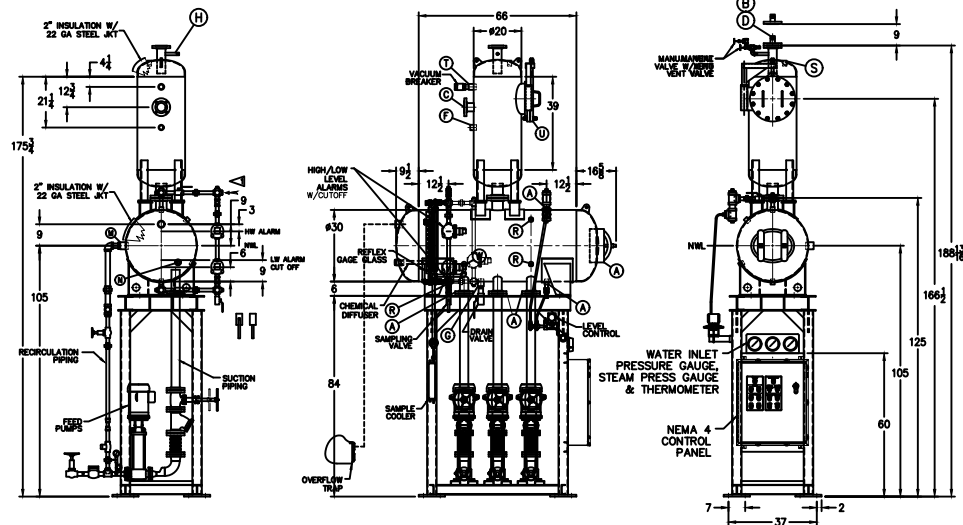
- (D) LOW TEMP. RETURN (<180 °F)
- (F) HIGH TEMP. RETURN (>180 °F)

* STAND HEIGHT SUBJECT TO PUMP HP/SH REQUIREMENTS
ALL COMPONENTS CONTINGENT UPON FINAL ENGINEERING.
PANEL SIZE MAY VARY DEPENDING ON JOB REQUIREMENTS

DEAERATOR TANK CONNECTIONS

A. (3) PUMP SUCTION	3 FLG. IN.
B. (1) WATER INLET	1 1/2 IN.
C. (1) STEAM INLET	3 FLG. IN.
D. (1) LOW TEMP. RETURN	1 1/2 IN.
E. (1) MED TEMP RETURN	1 IN.
F. (1) HI TEMP RETURN	1 1/4 IN.
G. (1) DRAIN	1 1/2 IN.
H. (1) MANUAL VENT	3/4 IN.
J. (1) VENT CONDENSOR	3 FLG. IN.
K. (1) OVERFLOW	2 IN.
L. (1) THERMOMETER	1 IN.
M. (1) RECIRCULATION	2 IN.
N. (1) CHEMICAL FEED	1 1/2 IN.
P. (1) MANWAY	12 X 16 IN.
Q. (2) LEVEL CONTROLS	1 IN.
R. (2) LEVEL ALARMS	1 IN.
S. (1) RELIEF VALVE	1 1/2 IN.
T. (1) VACUUM BREAKER	1 1/2 IN.
U. (1) TRAY BOX ACCESS	12 FLG. IN.
V. (2) DOWNCOMER	4 FLG. IN.
W. (1) SAMPLE COOLER	1 IN.

CONNECTIONS NPT UNLESS NOTED, FLANGES 150# UNLESS NOTED



RATING & CAPACITIES		LTR.	DATE	REVISIONS	BY	THIS DRAWING IS THE PROPERTY OF SUPERIOR BOILER AND SHALL NOT BE REPRODUCED IN PART OR IN WHOLE, AND NONE OF ITS INFORMATION SHALL BE REVEALED WITHOUT PERMISSION OR TO THE DETRIMENT OF THE OWNER. IT MUST BE RETURNED UPON REQUEST.
DA TYPE	TRAY	A		DESCRIPTION		
CAPACITY	7,000 LBS./HR					SOLD TO: XXX
DA SECTION CAPACITY	140 GALS.					JOB: XXX
DA STORAGE CAPACITY	10 MINUTES MIN.					DRAWN BY: XX DATE: XX CHECKED BY: DATE:
DESIGN PRESSURE	50 PSIG STEAM					DRAWING NAME: DEAERATOR, TRAY
DESIGN TEMP.	400° F					MODEL NO: TC007D155-125
DEAERATION	.005 CC/LITER					SIZE: 140 GALLONS
OPERATING PRESSURE	5 PSIG					SCALE: 1/36
DRY WEIGHT.	??,???					
OPERATING WEIGHT.	??,700 LBS					
FLOODED WEIGHT.	??,???					
THE ABOVE WEIGHTS DO NOT INCLUDE PUMPS, TRIM OR CONTROL PANEL.						
SHIPPING WEIGHT						
TANK (EMPTY)	HORIZ ???? / VERT. ???? LBS.					
STAND/PUMPS	???? / ???? LBS.					
NOTES						
1. ALL CONTROLS MOUNTED AS PER SPECIFICATION SHEET.						
2. SPECIFICATION SHEET TAKES PRIORITY OVER DRAWING.						
3. ALL DIMENSIONS ARE ±1" UNLESS OTHERWISE NOTED.						
4. DA TANK DESIGN CODE ASME SECTION VIII DIV 1						
5. DEWEATER ALL LOADS FROM 200% TOOK OF RATED OUTLET CAPACITY						
6. ELIMINATE TITRATABLE FREE CARBON DIOXIDE TO 0.						
CORROSION ALLOWANCE 1/16"						
7. TANK SEPARATED FROM STAND FOR SHIPMENT.						
8. SUPERIOR BOILER, INC. RESERVES THE RIGHT TO FURNISH TRIM SHOWN OR AN EQUAL SUBSTITUTE AS DETERMINED BY SB.						