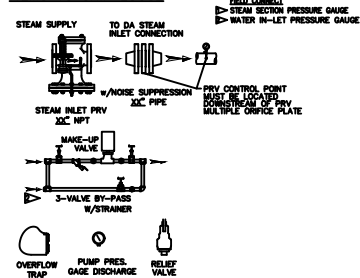


ITEMS TO SHIP LOOSE



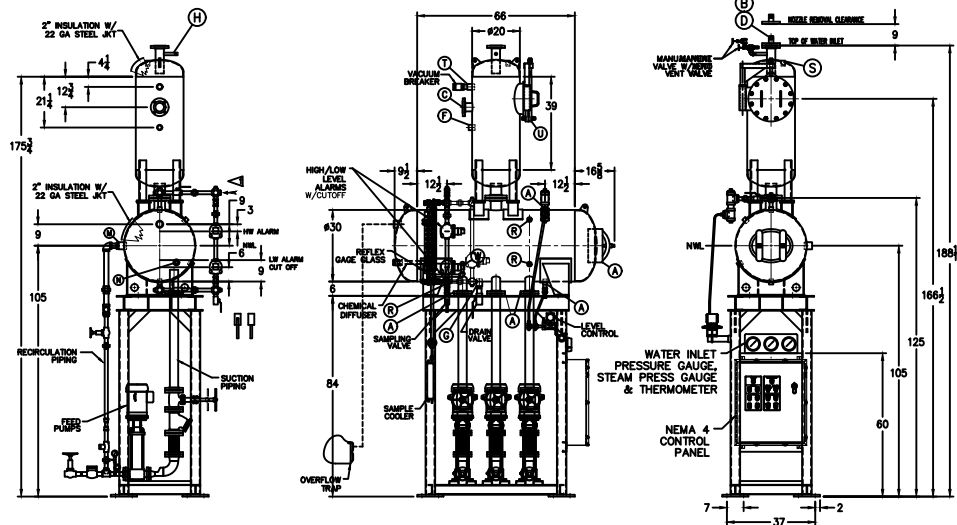
- (D) LOW TEMP. RETURN
 (<180 F)
 (F) HIGH TEMP. RETURN
 (>180 F)

* STAND HEIGHT SUBJECT TO PUMP HP/HQ REQUIREMENTS
 ALL COMPONENTS CONTINGENT UPON FINAL ENGINEERING.
 PANEL SIZE MAY VARY DEPENDING ON JOB REQUIREMENTS

DEAERATOR TANK CONNECTIONS

A. (3) PUMP SUCTION	3 FLG. IN.
B. (1) WATER INLET	1 1/2 IN.
C. (1) STEAM INLET	3 FLG. IN.
D. (1) LOW TEMP. RETURN	1 1/2 IN.
E. (1) MED TEMP. RETURN	1 1/2 IN.
F. (1) HI TEMP. RETURN	1 1/4 IN.
G. (1) DRAIN	1 1/2 IN.
H. (1) MANUAL VENT	3/4 IN.
J. (1) VENT CONDENSOR	3 FLG. IN.
K. (1) OVERFLOW	2 IN.
L. (1) THERMOMETER	1 IN.
M. (1) RECIRCULATION	2 IN.
N. (1) CHEMICAL FEED	1 1/2 IN.
P. (1) MANWAY	12 X 16 IN.
Q. (2) LEVEL CONTROLS	1 IN.
R. (2) LEVEL ALARMS	1 IN.
S. (1) RELIEF VALVE	1 1/2 IN.
T. (1) VACUUM BREAKER	1 1/2 IN.
U. (1) TRAY BOX ACCESS	12 FLG. IN.
V. (2) DOWNCOMER	4 FLG. IN.
W. (1) SAMPLE COOLER	1 IN.

CONNECTIONS NPT UNLESS NOTED, FLANGES 150# UNLESS NOTED



RATING & CAPACITIES		LTR.	DATE	REVISIONS	BY
DA TYPE	TRAY	A		DESCRIPTION	
CAPACITY	9,000 LBS./HR.				
DA SECTION CAPACITY	185 GALS.				
DA STORAGE CAPACITY	10 MINUTES MIN.				
DESIGN PRESSURE	50 PSIG STEAM				
DESIGN TEMP.	400° F				
DEAERATION	.005 CC/LITER				
OPERATING PRESSURE	5 PSIG				
DRY WEIGHT	??,??? LBS.				
OPERATING WEIGHT	??,??? LBS.				
FLOODED WEIGHT	??,??? LBS.				
THE ABOVE WEIGHTS DO NOT INCLUDE PUMPS, TRIM OR CONTROL PANEL					
SHIPPING WEIGHT					
TANK (EMPTY)	HORIZ. ? / VERT. ?				
STAND/PUMPS	??,??? /				

- NOTES
- ALL CONTROLS MOUNTED AS PER SPECIFICATION SHEET.
 - SPECIFICATION SHEET TAKES PRIORITY OVER DRAWING.
 - ALL DIMENSIONS ARE ±1" UNLESS OTHERWISE NOTED.
 - DA TANK DESIGN CODE ASME SECTION VIII DIV 1
 - SEPARATE ALL LOADS FROM JNDT 100% OF RATED OUTLET CAPACITY
 - ELIMINATE TITRABLE FREE CARBON DIOXIDE TO 0.
 - CORROSION ALLOWANCE 1/16"
 - TANK SEPARATED FROM STAND FOR SHIPMENT.
 - SUPERIOR BOILER, INC. RESERVES THE RIGHT TO FURNISH TRIM SHOWN OR AN EQUAL SUBSTITUTE AS DETERMINED BY SB.

THIS DRAWING IS THE PROPERTY OF SUPERIOR BOILER AND SHALL NOT BE REPRODUCED IN PART OR IN WHOLE, AND NONE OF ITS INFORMATION SHALL BE REVEALED WITHOUT PERMISSION OR TO THE DETRIMENT OF THE OWNER, IT MUST BE RETURNED UPON REQUEST.			
SOLD TO:	XXX		
JOB:	XXX		
DRAWN BY:	XX	CHECKED BY:	DATE
DRAWING NAME			
DEAERATOR, TRAY			
MODEL NO: TC009D155-125			
SIZE: 185 GALLONS			
SUPERIOR BOILER	SCALE	DRAWING NO	
	1/36	X	