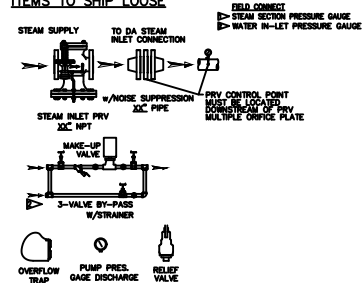


## ITEMS TO SHIP LOOSE

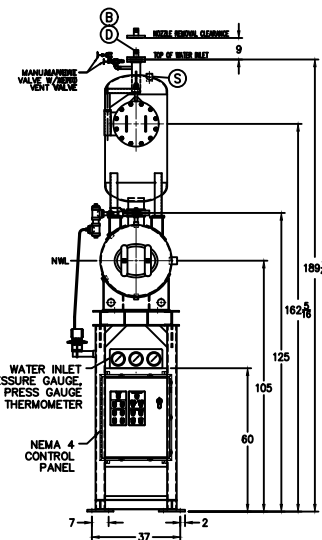
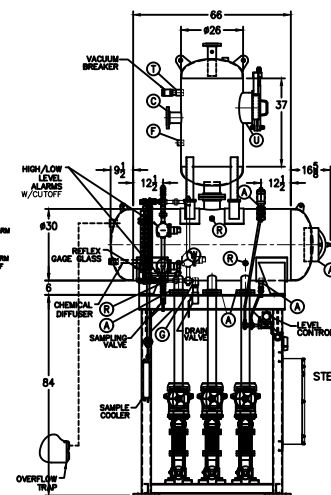
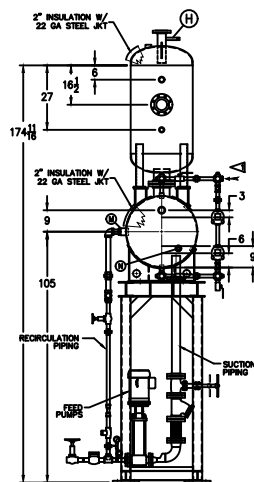


- (D) LOW TEMP. RETURN  
( $<180^{\circ}\text{F}$ )
- (F) HIGH TEMP. RETURN  
( $>180^{\circ}\text{F}$ )

\* STAND HEIGHT SUBJECT TO PUMP NPSH REQUIREMENTS  
ALL COMPONENTS CONTINGENT UPON FINAL ENGINEERING.  
PANEL SIZE MAY VARY DEPENDING ON JOB REQUIREMENTS

## DEAERATOR TANK CONNECTIONS

- |    |                      |             |
|----|----------------------|-------------|
| A. | (3) PUMP SUCTION     | 3 FLG IN.   |
| B. | (1) WATER INLET      | 1 1/2 IN.   |
| C. | (1) STEAM INLET      | 3 FLG IN.   |
| D. | (1) LOW TEMP. RETURN | 1 1/2 IN.   |
| E. | ( ) MED TEMP RETURN  | IN.         |
| F. | (1) HI TEMP RETURN   | 1 1/4 IN.   |
| G. | (1) DRAIN            | 1/2 IN.     |
| H. | (1) MANUAL VENT      | 3/4 IN.     |
| I. | (1) VENT CONDENSOR   | 3 FLG IN.   |
| J. | (1) OVERFLOW         | 2 IN.       |
| K. | (1) THERMOMETER      | 2 IN.       |
| L. | (1) RECIRCULATION    | 2 IN.       |
| M. | (1) CHEMICAL FEED    | 1 1/2 IN.   |
| P. | (1) MANWAY           | 12 X 16 IN. |
| Q. | (2) LEVEL CONTROLS   | 1 IN.       |
| R. | (2) LEVEL ALARMS     | 1 IN.       |
| S. | (1) RELIEF VALVE     | 1 1/2 IN.   |
| T. | (1) VACUUM BREAKER   | 1 1/2 IN.   |
| U. | (1) TRAY BOX ACCESS  | 12 FLG IN.  |
| V. | (1) DOWNCOMER        | 6 FLG IN.   |
| W. | (1) SAMPLE COOLER    | IN.         |
- CONCEPTS AND PRINCIPLES, 8 EDITIONS, 1000 LINES, 1000 PAGES



RATING & CAPACITIES		LTR.	DATE	REVISIONS	BY	THIS DRAWING IS THE PROPERTY OF SUPERIOR BOILER AND SHALL NOT BE REPRODUCED IN PART OR IN WHOLE, AND NONE OF ITS INFORMATION SHALL BE RELEASED WITHOUT PERMISSION OR TO THE DETRIMENT OF THE OWNER. IT MUST BE RETURNED UPON REQUEST.	
DA TYPE	TRAY	A	⊠	DESCRIPTION	✱		
CAPACITY	11,000 LBS/HR						SCALE TO: XXX
DA SECTION CAPACITY	220 GALS.						DATE: XXX
DA STORAGE CAPACITY	10 MINUTES MIN.						DRAWING BY: XX
DESIGN PRESSURE	50 PSIG STEAM						DATE: XXX
DESIGN TEMP.	400° F						CHECKED BY:
DEAERATION	.005 CC/LITER						DATE
OPERATING PRESSURE	5 PSIG						DRAWING NAME
DRY WEIGHT.	7.777 LBS						DEAERATOR, TRAY
OPERATING WEIGHT.	77.700 LBS					MODEL NO: TC01D155-125	
FLOODED WEIGHT.	77.777 LBS					SIZE: 220 GALLONS	
THE ABOVE WEIGHTS DO NOT INCLUDE PUMPS, TRIM OR CONTROL PANEL.				NOTES			
SHIPPING WEIGHT				1. ALL CONTROLS MOUNTED AS PER SPECIFICATION SHEET. 2. SPECIFICATION SHEET TAKES PRIORITY OVER DRAWING. 3. ALL DIMENSIONS ARE ±1" UNLESS OTHERWISE NOTED. 4. DA TANK DESIGN CODE: ASME SECTION VIII DIV. 1 5. DEAEATE ALL LOADS FROM 360° DOWNSIDE OF RATED OUTLET CAPACITY 6. ELIMINATE IRRITABLE FREE CARBON DIOXIDE TO O. 7. CORROSION ALLOWANCE 176" 8. TANK SEPARATED FROM STAND FOR SHIPMENT. 9. SUPERIOR BOILER, INC. RESERVES THE RIGHT TO FURNISH TRIM SUPPLY OF AN EQUAL SIZE, AS LONG AS IT DOES NOT EXCEED 35 LBS.		SCALE 1/36 DRAWING No X	
TANK (EMPTY)	HORIZ 7.777 / VERT. 7.777 LBS.						
STAND/PUMPS	7.777 / LBS.						