

[illegible]

(D) LOW TEMP. RETURN
($<180^{\circ}\text{F}$)

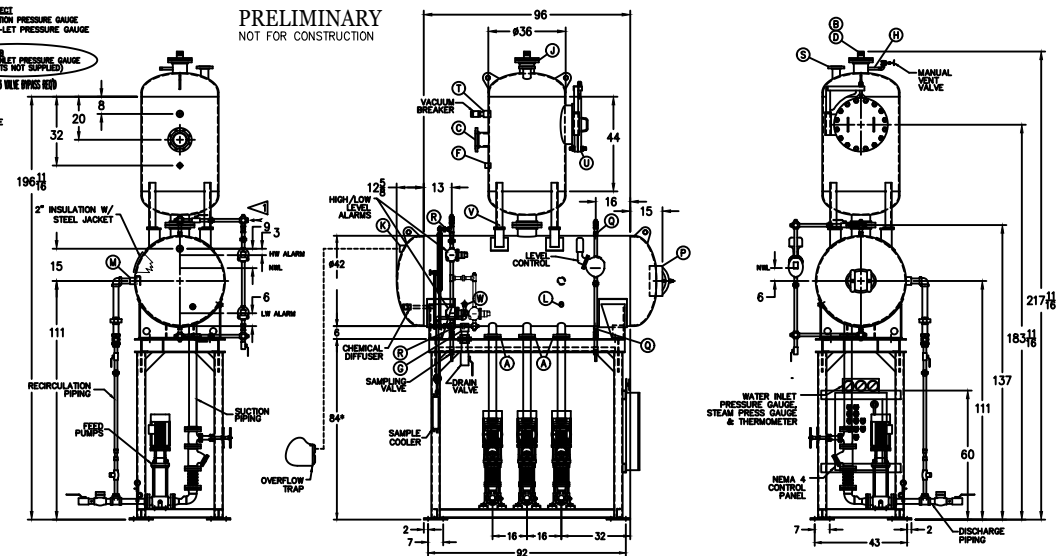
(F) HIGH TEMP. RETURN
($>180^{\circ}\text{F}$)

* STAND HEIGHT SUBJECT TO PUMP NPSH REQUIREMENTS
ALL COMPONENTS CONTINGENT UPON FINAL ENGINEERING.
PANEL SIZE MAY VARY DEPENDING ON JOB REQUIREMENTS
TRAYS TO BE SHIPPED LOOSE AND INSTALLED IN THE FIELD.

B.	WATER SUCTION	3	FLG. IN.
C.	PUMP INLET	2 1/2	IN.
D.	STEAM INLET	6	FLG. IN.
E.	LOW TEMP. RETURN	2 1/2	IN.
F.	HIGH TEMP. RETURN	1 1/4	IN.
G.	DRAIN	2 1/2	IN.
H.	MANUAL VENT	3/4	IN.
J.	VENT CONDENSOR	6	FLG. IN.
K.	OVERFLOW	1	IN.
L.	THERMOMETER	2	IN.
M.	RECIRCULATION	2	IN.
N.	CHEMICAL FEED	1	IN.
P.	MANWAY	12 X 16	IN.
Q.	LEVEL CONTROLS	16	IN.
R.	LEVEL ALARMS	16	IN.
S.	RELIEF VALVE	3" 300#	FLG. IN.
T.	RELIEF VALVE	2"	FLG. IN.
V.	TRAY COCK ACCESS	18	FLG. IN.
W.	DOWNCOMER	8	FLG. IN.
X.	SAMPLE COOLER	1	IN.

CONNECTIONS 1/2 UNLESS NOTED, FLANGES 150# UNLESS NOTED

CONNECTIONS NPT UNLESS NOTED, FLANGES 150# UNLESS NOTED

PRELIMINARY
NOT FOR CONSTRUCTION

RATING & CAPACITIES		LTR.	DATE	REVISIONS	BY	THIS DRAWING IS THE PROPERTY OF SUPERIOR BOILER AND SHALL NOT BE REPRODUCED IN PART OR IN WHOLE, AND NONE OF ITS INFORMATION SHALL BE REVEALED WITHOUT PERMISSION OR TO THE DETRIMENT OF THE OWNER, IT MUST BE RETURNED UPON REQUEST.
DA TYPE	TRAY	A	DATE	DESCRIPTION	BY	
CAPACITY	30,000 LBS/HR					SCALE: 1/4" = 1'
DA SECTION CAPACITY	595 GALS.					SB
DA STORAGE CAPACITY	10 MINUTES MIN.					SB
DESIGN PRESSURE	50 PSIG STEAM					
DESIGN TEMP.	400° F					DRAWN BY: XX DATE: DATE CHECKED BY: DATE:
DEAERATION	.005 CC/LITER					
OPERATING PRESSURE	5 PSIG					DRAWING NAME
DRY WEIGHT.	6,150 LBS					DEAERATOR, TRAY
OPERATING WEIGHT.	9,900 LBS					MODEL NO: TC0307155-125
FLOODED WEIGHT.	11,000 LBS					SIZE: 595 GALLONS
THE ABOVE WEIGHTS DO NOT INCLUDE PUMPS, TRIM OR CONTROL PANEL.						
SHIPPING WEIGHT						
TANK (EMPTY)	HORIZ 2,600 /VERT. 2,250 LBS.					SCALE 1/4"
STAND/PUMPS	71,300 / 2,300 LBS.					DRAWING No X

NOTES

1. ALL CONTROLS MOUNTED AS PER SPECIFICATION SHEET.
2. SPECIFICATION SHEET TAKES PRIORITY OVER DRAWING.
3. ALL DIMENSIONS ARE ±1" UNLESS OTHERWISE NOTED.
4. DA TANK DESIGN CODE IS SECTION 170.
5. DEAERATE ALL LIQUIDS FROM 30% TO 100% OF RATED OUTLET CAPACITY
6. ELIMINATE IRRITABLE FREE CARBON DIOXIDE TO O.
7. CORROSION ALLOWANCE 1/16"
8. TANK SEPARATED FROM STAND FOR SHIPMENT.
9. SUPERIOR BOILER, INC. RESERVES THE RIGHT TO FURNISH TRIM SUPPLY OR AN EQUIV. SUBSTITUTE AS DETERMINED BY SB.

SUPERIOR BOILER