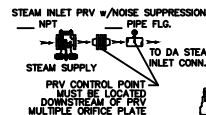
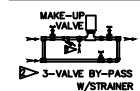


ITEMS TO SHIP LOOSE



- (D) LOW TEMP. RETURN (<180 °F)
- (F) HIGH TEMP. RETURN (>180 °F)

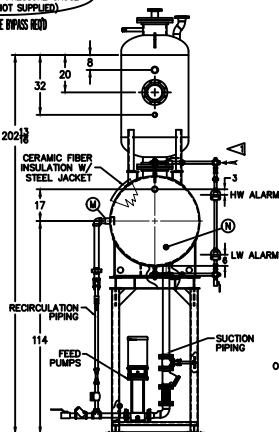
* STAND HEIGHT SUBJECT TO PUMP MPH REQUIREMENTS
ALL COMPONENTS CONTINGENT UPON FINAL ENGINEERING.
PANEL SIZE MAY VARY DEPENDING ON JOB REQUIREMENTS
TRAYS TO BE SHIPPED LOOSE AND INSTALLED IN THE FIELD.

DEAERATOR TANK CONNECTIONS

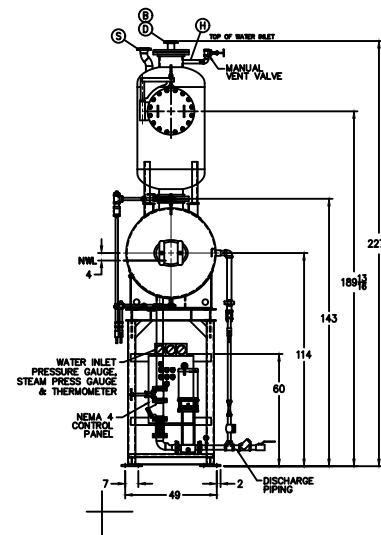
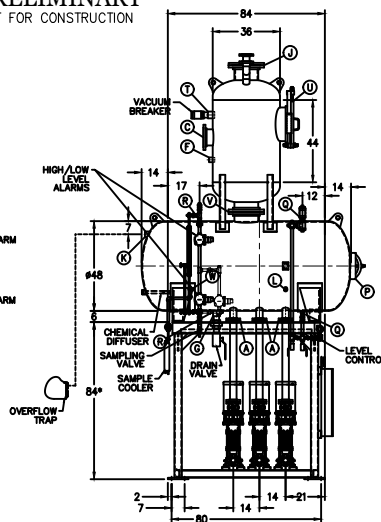
- A. (3) PUMP SUCTION 3 FLG. IN.
- B. (1) WATER INLET 3 FLG. IN.
- C. (1) STEAM INLET 8 FLG. IN.
- D. (1) LOW TEMP. RETURN 3 FLG. IN.
- E. (1) MED TEMP RETURN 1 IN.
- F. (1) HI TEMP RETURN 1 1/2 IN.
- G. (1) DRAIN 2 1/2 IN.
- H. (1) MANUAL VENT 1 1/2 IN.
- J. (1) VENT CONDENSOR 12 FLG. IN.
- K. (1) OVERFLOW 2 IN.
- L. (1) THERMOMETER 1 IN.
- M. (1) RECIRCULATION 2 IN.
- N. (1) CHEMICAL FEED 1 IN.
- P. (1) MANWAY 12 X 16 IN.
- Q. (2) LEVEL CONTROLS 1 IN.
- R. (2) LEVEL ALARMS 1 IN.
- S. (1) RELIEF VALVE 3" 300# FLG. IN.
- T. (1) VACUUM BREAKER 2 1/2 IN.
- U. (1) TRAY BOX ACCESS 18 IN.
- V. (1) DOWNCOMER 12 FLG. IN.
- W. (1) SAMPLE COOLER 1 IN.

CONNECTIONS NPT UNLESS NOTED, FLANGES 150# UNLESS NOTED

FIELD CONNECT
D> STEAM SECTION PRESSURE GAUGE
E> WATER IN-LET PRESSURE GAUGE
FIELD PLUMB
E> WATER IN-LET PRESSURE GAUGE (COMPONENTS NOT SUPPLIED)
SEE F.3 W/LE BYPASS REQ



PRELIMINARY NOT FOR CONSTRUCTION



RATING & CAPACITIES		LTR.	DATE	REVISIONS	BY	THIS DRAWING IS THE PROPERTY OF SUPERIOR BOILER AND SHALL NOT BE REPRODUCED IN PART OR IN WHOLE, AND NONE OF ITS INFORMATION SHALL BE REVEALED WITHOUT PERMISSION OR TO THE DETRIMENT OF THE OWNER. IT MUST BE RETURNED UPON REQUEST.
DA TYPE TRAY		A	12-26-13	DESCRIPTION		
CAPACITY 35,000 LBS./HR.						SOLD TO:
DA SECTION CAPACITY 700 GALS.						SB
DA STORAGE CAPACITY 10 MINUTES MIN.						SB
DESIGN PRESSURE 50 PSIG STEAM						DRAWN BY: X DATE: X CHECKED BY: X DATE: X
DESIGN TEMP. 400° F						DRAWING NAME
DEAERATION .005 CC/LITER						DEAERATOR, TRAY
OPERATING PRESSURE 5 PSIG						MODEL NO: TC035T155-125
DRY WEIGHT 6,450 LBS.						SIZE: 700 GALLONS
OPERATING WEIGHT 11,120 LBS.						SCALE 1/46
FLOODED WEIGHT 12,300 LBS.						DRAWING No X
THE ABOVE WEIGHTS DO NOT INCLUDE PUMPS, TRIM OR CONTROL PANEL						
SHIPPING WEIGHT						
TANK (EMPTY) HORIZ 2,770 / VERT 2,420 LBS.						
STAND/PUMPS 1,265 LBS.						

- NOTES
1. ALL CONTROLS MOUNTED AS PER SPECIFICATION SHEET.
 2. SPECIFICATION SHEET TAKES PRIORITY OVER DRAWING.
 3. ALL DIMENSIONS ARE ±1" UNLESS OTHERWISE NOTED.
 4. DA TANK DESIGN CODE ASME SECTION VIII DIV 1
 5. SEPARATE ALL LOADS FROM JUNIT 100% OF RATED OUTLET CAPACITY
 6. ELIMINATE TITRATABLE FREE CARBON DIOXIDE TO 0.
 7. CORROSION ALLOWANCE 1/16"
 8. TANK SEPARATED FROM STAND FOR SHIPMENT.
 9. SUPERIOR BOILER, INC. RESERVES THE RIGHT TO FURNISH TRIM SHOWN OR AN EQUAL SUBSTITUTE AS DETERMINED BY SB.

SUPERIOR BOILER