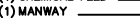
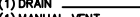
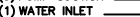
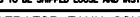
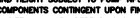
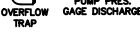
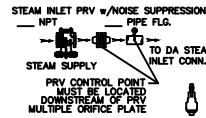
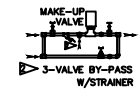
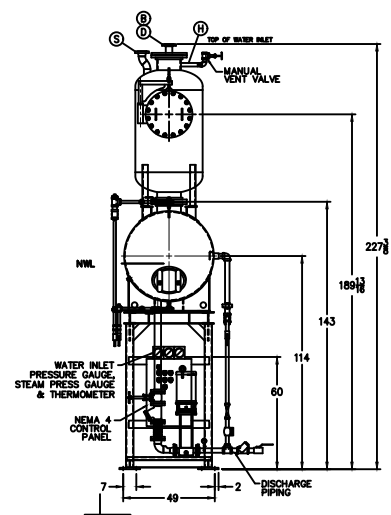
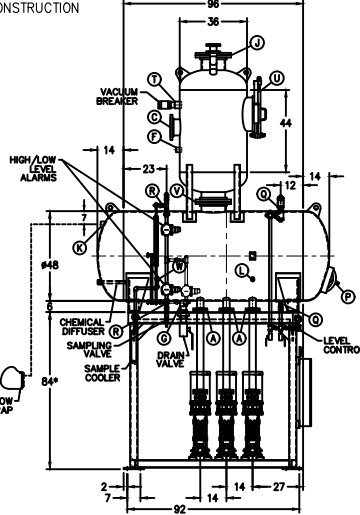
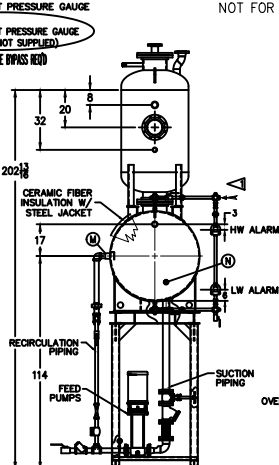


# ITEMS TO SHIP LOOSE



FIELD CONNECT  
D> STEAM SECTION PRESSURE GAUGE  
D> WATER IN-LET PRESSURE GAUGE  
FIELD PLUMB  
D> WATER IN-LET PRESSURE GAUGE  
(COMPONENTS NOT SUPPLIED)  
SEE F.3 W/LE BYPASS REQ

## PRELIMINARY NOT FOR CONSTRUCTION



### DEAERATOR TANK CONNECTIONS

- A. (3) PUMP SUCTION 3 FLG. IN.
- B. (1) WATER INLET 3 FLG. IN.
- C. (1) STEAM INLET 8 FLG. IN.
- D. (1) LOW TEMP. RETURN 3 FLG. IN.
- E. (1) MED TEMP RETURN 1 IN.
- F. (1) HI TEMP RETURN 1 1/2 IN.
- G. (1) DRAIN 2 1/2 IN.
- H. (1) MANUAL VENT 1 1/2 IN.
- J. (1) VENT CONDENSOR 12 FLG. IN.
- K. (1) OVERFLOW 2 IN.
- L. (1) THERMOMETER 1 IN.
- M. (1) RECIRCULATION 2 IN.
- N. (1) CHEMICAL FEED 1 IN.
- P. (1) MANWAY 12 X 16 IN.
- Q. (2) LEVEL CONTROLS 1 IN.
- R. (2) LEVEL ALARMS 1 IN.
- S. (1) RELIEF VALVE 3" 300# FLG. IN.
- T. (1) VACUUM BREAKER 2 1/2 IN.
- U. (1) TRAY BOX ACCESS 18 IN.
- V. (1) DOWNCOMER 8 IN.
- W. (1) SAMPLE COOLER 1 IN.

CONNECTIONS NPT UNLESS NOTED, FLANGES 150# UNLESS NOTED

RATING & CAPACITIES	
DA TYPE	TRAY
CAPACITY	40,000 LBS./HR.
DA SECTION CAPACITY	800 GALS.
DA STORAGE CAPACITY	10 MINUTES MIN.
DESIGN PRESSURE	50 PSIG STEAM
DESIGN TEMP.	400° F
DEAERATION	.005 CC/LITER
OPERATING PRESSURE	5 PSIG
DRY WEIGHT	6,730 LBS.
OPERATING WEIGHT	11,935 LBS.
FLOODED WEIGHT	13,250 LBS.
THE ABOVE WEIGHTS DO NOT INCLUDE PUMPS, TRIM OR CONTROL PANEL	
SHIPPING WEIGHT	
TANK (EMPTY)	HORIZ 2,960 / VERT 2,440 LBS.
STAND/PUMPS	1,335 LBS.

LTR.	DATE	REVISIONS	BY
A	12-26-13	DESCRIPTION	

NOTES  
1. ALL CONTROLS MOUNTED AS PER SPECIFICATION SHEET.  
2. SPECIFICATION SHEET TAKES PRIORITY OVER DRAWING.  
3. ALL DIMENSIONS ARE ±1" UNLESS OTHERWISE NOTED.  
4. DA TANK DESIGN CODE ASME SECTION VIII, DIV 1  
5. SEPARATE ALL LOADS FROM JUNIT 100% OF RATED OUTLET CAPACITY  
6. ELIMINATE TITRATABLE FREE CARBON DIOXIDE TO 0.  
7. CORROSION ALLOWANCE 1/16"  
8. TANK SEPARATED FROM STAND FOR SHIPMENT.  
9. SUPERIOR BOILER, INC. RESERVES THE RIGHT TO FURNISH TRIM SHOWN OR AN EQUAL SUBSTITUTE AS DETERMINED BY SB.

THIS DRAWING IS THE PROPERTY OF SUPERIOR BOILER AND SHALL NOT BE REPRODUCED IN PART OR IN WHOLE, AND NONE OF ITS INFORMATION SHALL BE REVEALED WITHOUT PERMISSION OR TO THE DETRIMENT OF THE OWNER, IT MUST BE RETURNED UPON REQUEST.

SB

SB

DRAWN BY: X DATE: X CHECKED BY: X DATE: X

DRAWING NAME  
DEAERATOR, TRAY

MODEL NO: TC040T155-125  
SIZE: 800 GALLONS

SCALE: 1/4" = 1'-0"  
DRAWING No: X

SUPERIOR BOILER