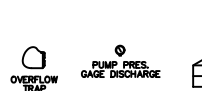
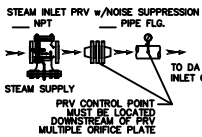
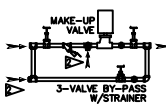


ITEMS TO SHIP LOOSE



- OVERFLOW TRAP
- PUMP PRESS. GAUGE DISCHARGE
- TRAYS (CHECK SPEC SHEET FOR QUANTITY)
- LOW TEMP. RETURN (<180 °F)
- HIGH TEMP. RETURN (>180 °F)

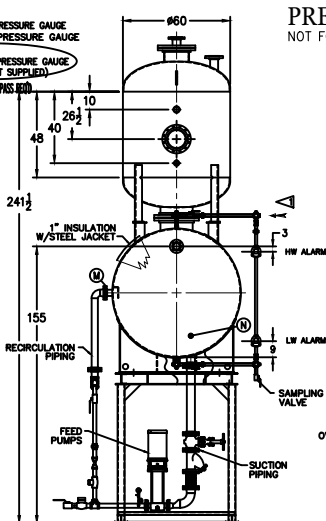
* STAND HEIGHT SUBJECT TO PUMP HPISH REQUIREMENTS
ALL COMPONENTS CONTINGENT UPON FINAL ENGINEERING.
PANEL SIZE MAY VARY DEPENDING ON JOB REQUIREMENTS
TRAYS TO BE SHIPPED LOOSE AND INSTALLED IN THE FIELD.

DEAERATOR TANK CONNECTIONS

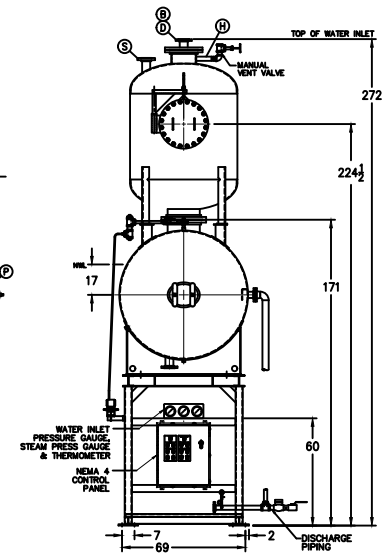
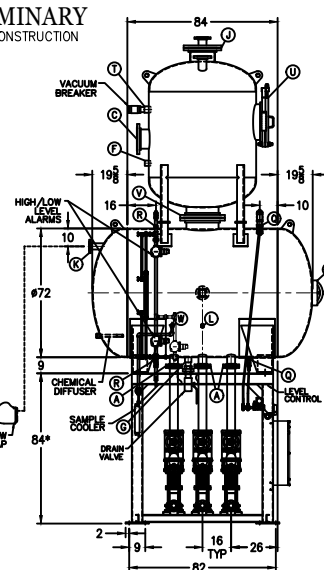
- A. (3) PUMP SUCTION 4 FLG. IN.
- B. (1) WATER INLET 4 FLG. IN.
- C. (1) STEAM INLET 10 FLG. IN.
- D. (1) LOW TEMP. RETURN 4 FLG. IN.
- E. (1) MED TEMP. RETURN 2 IN.
- F. (1) HI TEMP. RETURN 2 IN.
- G. (1) DRAIN 2 1/2 IN.
- H. (1) MANUAL VENT 2 IN.
- J. (1) VENT CONDENSOR 14 FLG. IN.
- K. (1) OVERFLOW 3 FLG. IN.
- L. (1) THERMOMETER 1 IN.
- M. (1) RECIRCULATION 3 FLG. IN.
- N. (1) CHEMICAL FEED 1 IN.
- P. (1) MANWAY 12 X 16 IN.
- Q. (2) LEVEL CONTROLS 1 IN.
- R. (2) LEVEL ALARMS 1 IN.
- S. (1) RELIEF VALVE 4 300# FLG. IN.
- T. (1) VACUUM BREAKER 2 1/2 IN.
- U. (1) TRAY BOX ACCESS 20 FLG. IN.
- V. (1) DOWNCOMER 18 FLG. IN.
- W. (1) SAMPLE COOLER 1 IN.

CONNECTIONS NPT UNLESS NOTED, FLANGES 150# UNLESS NOTED

- FIELD CONNECT
- STEAM SECTION PRESSURE GAUGE
- WATER IN-LET PRESSURE GAUGE
- FIELD PLUMB
- WATER IN-LET PRESSURE GAUGE (COMPONENTS NOT SUPPLIED)
- SEE F 3 W/LE INPASS 800



PRELIMINARY
NOT FOR CONSTRUCTION



RATING & CAPACITIES	
DA TYPE	TRAY
CAPACITY	80,000 LBS./HR.
DA SECTION CAPACITY	1,600 GALS.
DA STORAGE CAPACITY	10 MINUTES MIN.
DESIGN PRESSURE	50 PSIG STEAM
DESIGN TEMP.	400° F
DEAERATION	.005 CC/LITER
OPERATING PRESSURE	5 PSIG
DRY WEIGHT	10,190 LBS.
OPERATING WEIGHT	22,785 LBS.
FLOODED WEIGHT	24,520 LBS.
THE ABOVE WEIGHTS DO NOT INCLUDE PUMPS, TRIM OR CONTROL PANEL	
SHIPPING WEIGHT	
TANK (EMPTY)	HORIZ 4,425 / VERT 3,950 LBS.
STAND/PUMPS	1,816 / LBS.

LTR.	DATE	REVISIONS	BY
A	12-26-13	DESCRIPTION	

- NOTES
- ALL CONTROLS MOUNTED AS PER SPECIFICATION SHEET.
 - SPECIFICATION SHEET TAKES PRIORITY OVER DRAWING.
 - ALL DIMENSIONS ARE ±1" UNLESS OTHERWISE NOTED.
 - DA TANK DESIGN CODE ASME SECTION VIII DIV 1
 - SEPARATE ALL LOADS FROM JUNIT 100% OF RATED OUTLET CAPACITY
 - ELIMINATE TITRABLE FREE CARBON DIOXIDE TO 0.
 - CORROSION ALLOWANCE 1/16"
 - TANK SEPARATED FROM STAND FOR SHIPMENT.
 - SUPERIOR BOILER, INC. RESERVES THE RIGHT TO FURNISH TRIM SHOWN OR AN EQUAL SUBSTITUTE AS DETERMINED BY SB.

THIS DRAWING IS THE PROPERTY OF SUPERIOR BOILER AND SHALL NOT BE REPRODUCED IN PART OR IN WHOLE, AND NONE OF ITS INFORMATION SHALL BE REVEALED WITHOUT PERMISSION OR TO THE DETRIMENT OF THE OWNER, IT MUST BE RETURNED UPON REQUEST.

SB

SB

DRAWN BY: X DATE: X CHECKED BY: X DATE: X

DRAWING NAME
DEAERATOR, SPRAY

MODEL NO: SS080T155-125
SIZE: 1,600 GALLONS

SCALE: 1/48
DRAWING NO: X

SUPERIOR BOILER