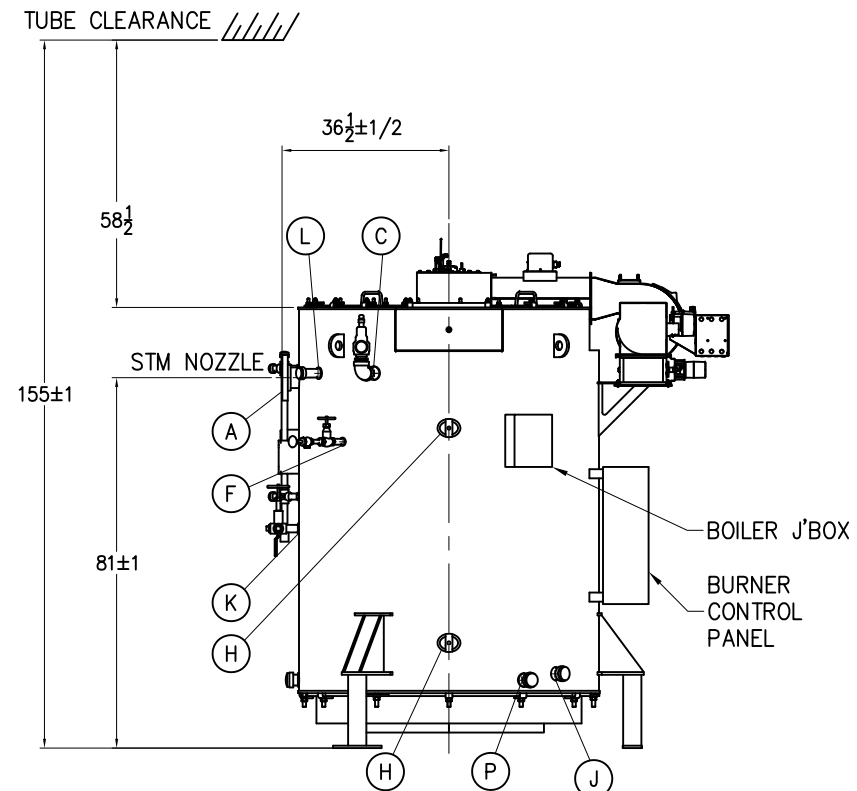
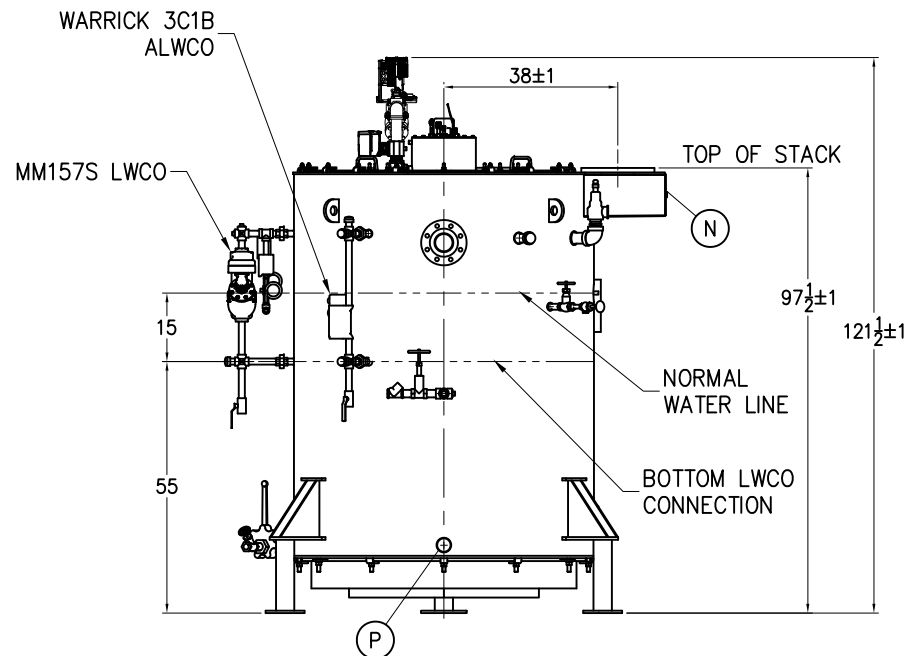

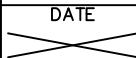


STACK DETAIL



BOILER CONNECTIONS		RATINGS & CAPACITIES		LTR	DATE	REVISION		BY	REPRESENTATIVE:		
A.(1) STEAM OUTLET	4" 300#	HORSEPOWER	100						X		
B.(4) LWCO	1" NPT	DESIGN PRESSURE	150 PSIG								
C.(1) SAFETY VALVE	2" NPT	GROSS OUTPUT	3348 MBH								
D.() SAFETY VALVE		STEAM (FROM & AT 212°F)	3450 LB/HR						PROJECT:		
E.(1) BOILER BLOWDOWN	1 1/4" NPT	HEAT RELEASE: (FURNACE ONLY)	168,090 BTU/CuFt						X		
F.(1) SURFACE BLOWDOWN	1" NPT	RATED INPUT	4184 MBH								
G.() MANWAY		HEATING SURFACE (ASME)	347 SqFt								
H.(4) HANDHOLE	3" x 4"	FURNACE HEATING SURFACE	41.12 SqFt								
J.(1) SIGHTPORT	2" NPT	FURNACE VOLUME:		NOTES					CHECKED BY	DATE	THIS DRAWING IS THE PROPERTY OF SUPERIOR BOILER AND SHALL NOT BE REPRODUCED IN PART OR IN WHOLE, & NONE OF ITS INFORMATION SHALL BE REVEALED WITHOUT PERMISSION OR TO THE DETRIMENT OF THE OWNER. IT MUST BE RETURNED UPON REQUEST.
K.(1) FEEDWATER	1 1/4" NPT	FURNACE ONLY	24.89 CuFt						DRAWN BY		
L.(1) AUXILIARY	1 1/2" NPT	STEAMING VOLUME	15.91 CuFt	1. ALL CONTROLS MOUNTED AS PER SPECIFICATION SHEET. 2. SPECIFICATION SHEET TAKES PRIORITY OVER R & D SHEET. 3. BOILER DESIGN CODE ASME SECTION I. 4. BOILER INSULATED WITH 2"-8# DENSITY MINERAL FIBER INSULATION WITH 22 GAUGE STEEL JACKET. 5. ALL DIMENSIONS ARE ±1/2" UNLESS OTHERWISE NOTED.				X			
M.() LOW FIRE HOLD		STEAM RELEASE AREA	12.32 SqFt					BOILER MODEL			
N.(1) STACK TEMP	1/2" NPT	WATER CAPACITY:		DVFT-100-S150-WB-G							
P.(2) INSPECTION	2" NPT	(FULL) 515 Gal @ 4,284 Lbs		SCALE		DRAWING No					
Q.()		(NWL) 396 Gal @ 3,294 Lbs		1/42		X					
R.()		SHIPPING WEIGHT: 9,400 Lbs									
S.()											