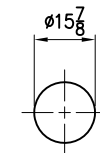
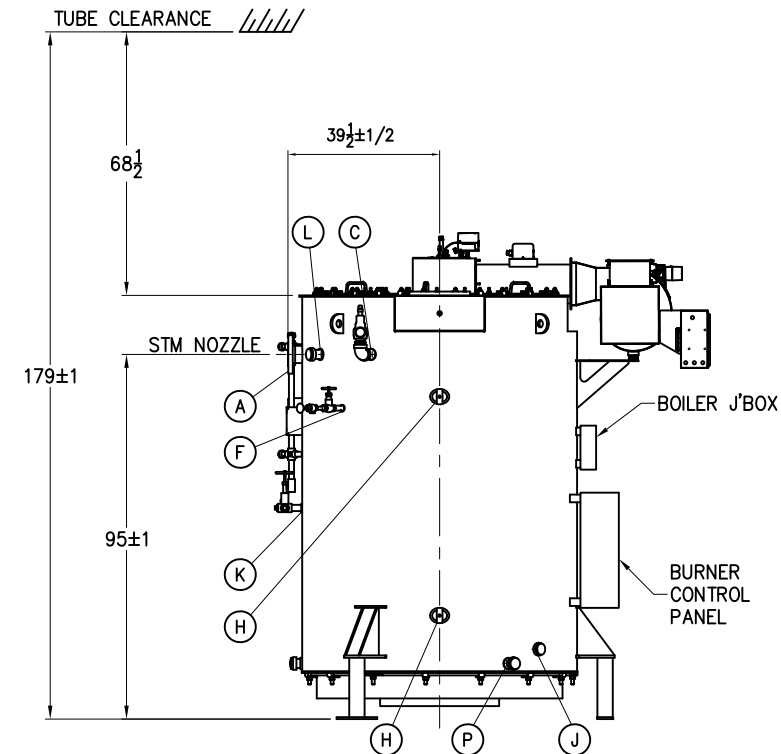
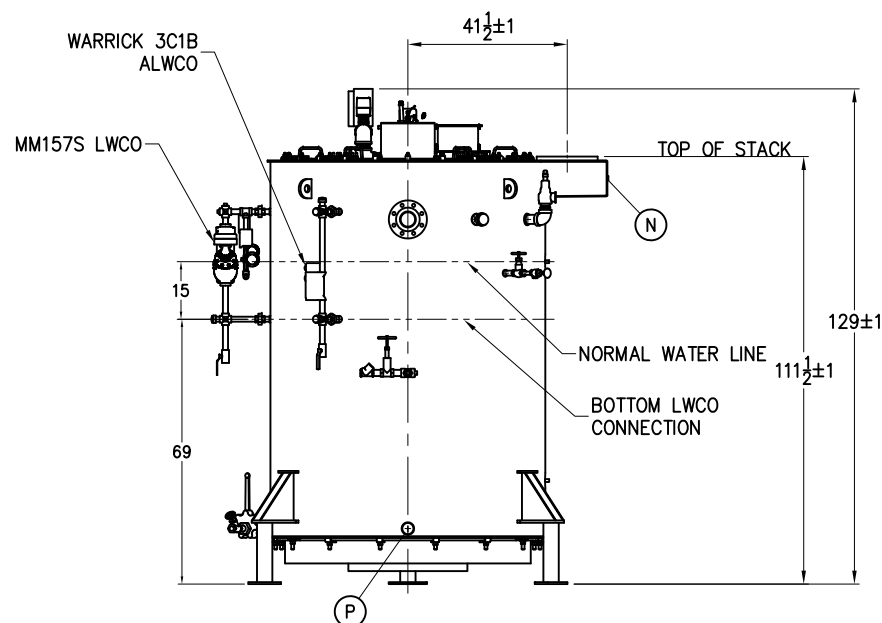




LEVEL SEQUENCE



STACK DETAIL



| BOILER CONNECTIONS | | RATINGS & CAPACITIES | | LTR | DATE | REVISION | | BY | REPRESENTATIVE: | | | | | |
|------------------------|------------|------------------------------|---------------------|-----|------|--------------------|--|---|-----------------|------------|--|------|--|---|
| A.(1) STEAM OUTLET | 4" 300# | HORSEPOWER | 125 | | | | | | X | | | | | |
| B.(4) LWCO | 1" NPT | DESIGN PRESSURE | 150 PSIG | | | | | | | | | | | |
| C.(1) SAFETY VALVE | 2" NPT | GROSS OUTPUT | 4184 MBH | | | | | | | | | | | |
| D.() SAFETY VALVE | | STEAM (FROM & AT 212°F) | 4312 Lbs/HR | | | | | | PROJECT: | | | | | |
| E.(1) BOILER BLOWDOWN | 1 1/4" NPT | HEAT RELEASE: (FURNACE ONLY) | 125,047 BTU/CuFt | | | | | | X | | | | | |
| F.(1) SURFACE BLOWDOWN | 1" NPT | RATED INPUT | 5230 MBH | | | | | | | | | | | |
| G.() MANWAY | | HEATING SURFACE (ASME) | 460 SqFt | | | | | | | | | | | |
| H.(4) HANDHOLE | 3" x 4" | FURNACE HEATING SURFACE | 57.27 SqFt | | | | | | | | | | | |
| J.(1) SIGHTPORT | 2" NPT | FURNACE VOLUME | | | | NOTES | |  | | CHECKED BY | | DATE | | THIS DRAWING IS THE PROPERTY OF SUPERIOR BOILER AND SHALL NOT BE REPRODUCED IN PART OR IN WHOLE, & NONE OF ITS INFORMATION SHALL BE REVEALED WITHOUT PERMISSION OR TO THE DETRIMENT OF THE OWNER. IT MUST BE RETURNED UPON REQUEST. |
| K.(1) FEEDWATER | 1 1/4" NPT | FURNACE ONLY | 41.83 CuFt | | | | | | | DRAWN BY | | DATE | | |
| L.(1) AUXILIARY | 2" NPT | STEAMING VOLUME | 18.00 CuFt | | | X | |  | | | | | | |
| M.() LOW FIRE HOLD | | STEAM RELEASE AREA | 13.94 SqFt | | | BOILER MODEL | | | | | | | | |
| N.(1) STACK TEMP | 1/2" NPT | WATER CAPACITY: | | | | DVFT-125-S150-WB-G | | | | | | | | |
| P.(2) INSPECTION | 2" NPT | (FULL) | 677 Gal @ 5,629 Lbs | | | SCALE | | DRAWING No | | | | | | |
| Q.() | | (NWL) | 542 Gal @ 4,508 Lbs | | | 1/50 | | X | | | | | | |
| R.() | | SHIPPING WEIGHT: | 11,800 Lbs | | | | | | | | | | | |
| S.() | | | | | | | | | | | | | | |