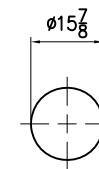
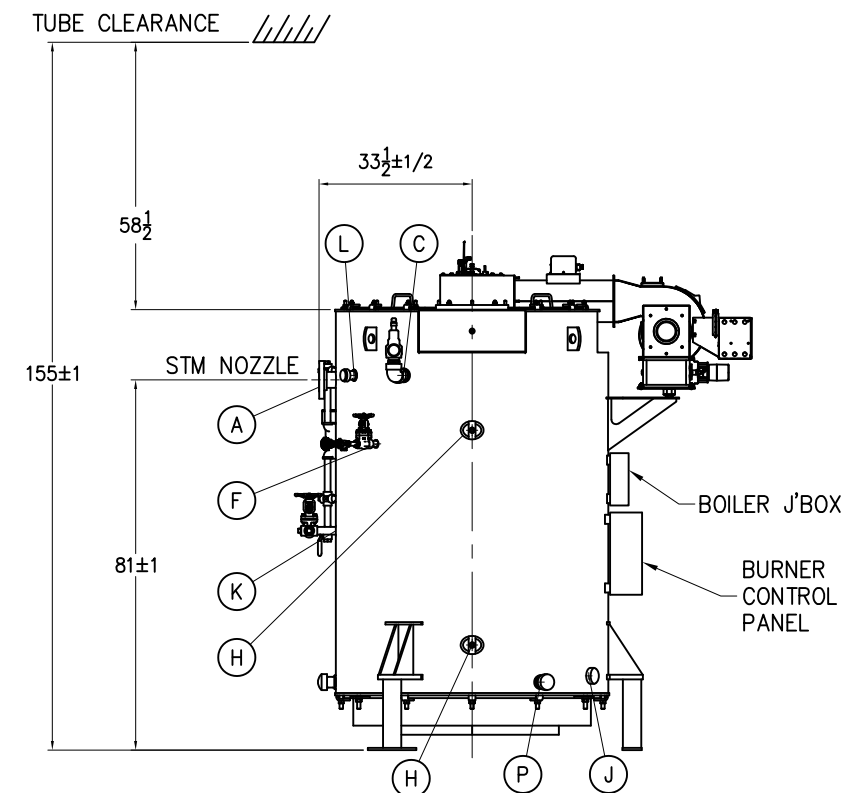
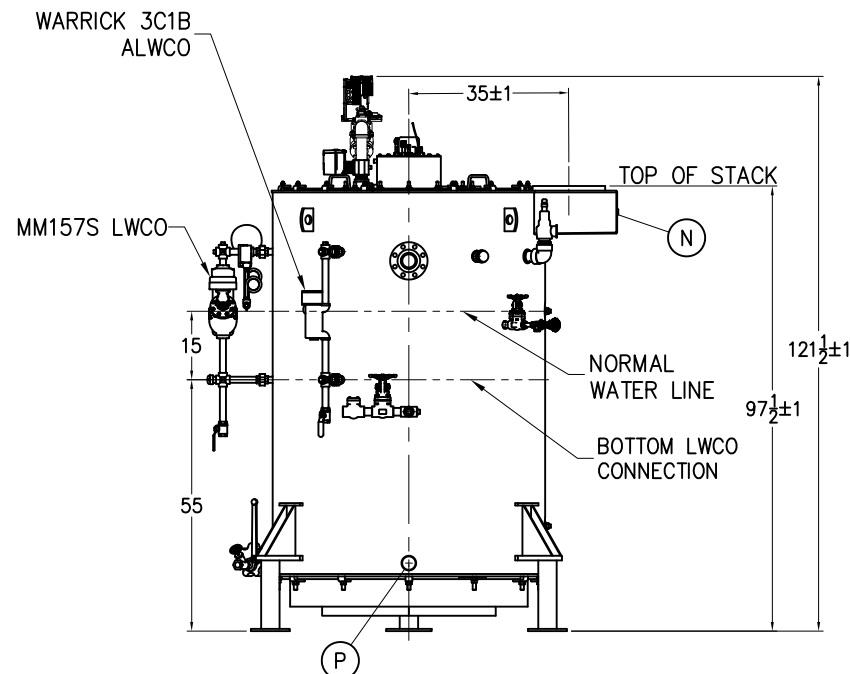
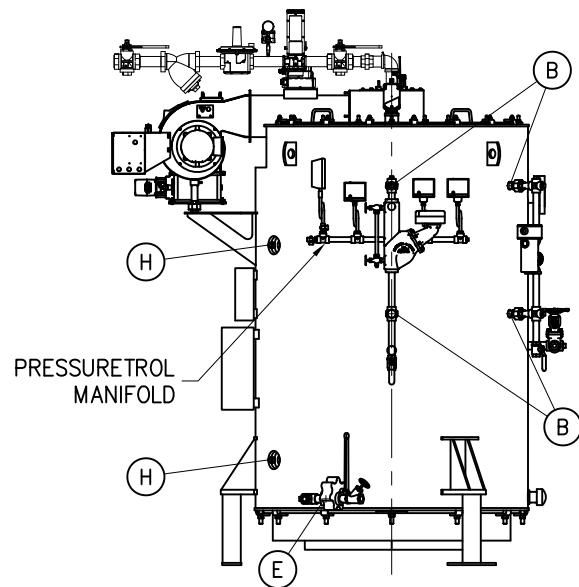


LEVEL SEQUENCE



STACK DETAIL



BOILER CONNECTIONS		RATINGS & CAPACITIES		LTR	DATE	REVISION	BY	REPRESENTATIVE:	
A.(1) STEAM OUTLET	3" 300#	HORSEPOWER	80					X	
B.(4) LWCO	1" NPT	DESIGN PRESSURE	150 PSIG						
C.(1) SAFETY VALVE	1 1/2" NPT	GROSS OUTPUT	2,678 MBH						
D.() SAFETY VALVE		STEAM (FROM & AT 212°F)	2,760 LB/HR						
E.(1) BOILER BLOWDOWN	1 1/4" NPT	HEAT RELEASE: (FURNACE ONLY)	209,209 BTU/CuFt					X	
F.(1) SURFACE BLOWDOWN	1" NPT	RATED INPUT	3,348 MBH						
G.() MANWAY		HEATING SURFACE (ASME)	288 SqFt						
H.(3) HANDHOLE	3" x 4"	FURNACE HEATING SURFACE	32.97 SqFt						
J.(1) SIGHTPORT	2" NPT	FURNACE VOLUME:							
K.(1) FEEDWATER	1 1/4" NPT	FURNACE ONLY	16.00 CuFt						
L.(1) AUXILIARY	1 1/2" NPT	STEAMING VOLUME	13.95 CuFt						
M.() LOW FIRE HOLD		STEAM RELEASE AREA	10.80 SqFt						
N.(1) STACK TEMP	1/2" NPT	WATER CAPACITY:						THIS DRAWING IS THE PROPERTY OF SUPERIOR BOILER AND SHALL NOT BE REPRODUCED IN PART OR IN WHOLE, & NONE OF ITS INFORMATION SHALL BE REVEALED WITHOUT PERMISSION OR TO THE DETRIMENT OF THE OWNER. IT MUST BE RETURNED UPON REQUEST.	
P.(2) INSPECTION	2" NPT	(FULL)	452 Gal @ 3,759 Lbs						
Q.()		(NWL)	348 Gal @ 2,891 Lbs						
R.()		SHIPPING WEIGHT:	8,200 Lbs						
S.()									
						NOTES		SUPERIOR BOILER	
								CHECKED BY	DATE
								DRAWN BY	DATE
								X	
						BOILER MODEL			
						DVFT-80-S150-WB-G			
						SCALE	DRAWING No		
						1/42	X		