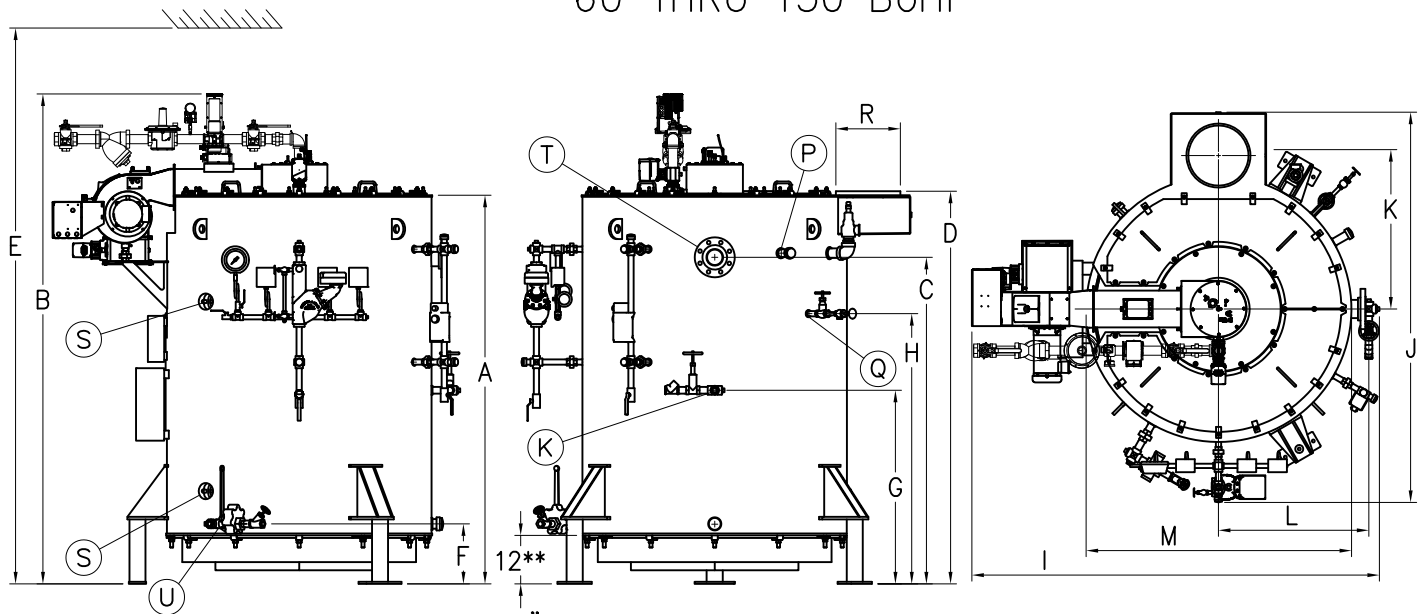




# UTE 2 PASS DOWNFIRE VERTICAL 60 THRU 150 BoHP

DIMENSIONAL DATA  
STEAM BOILERS  
15 AND 150 PSIG  
FORM CAT-UTE  
ISSUED: AUGUST 2021



\*\*12" After Bottom Lid is Removed

NOMINAL BOILER HORSEPOWER		60	80	100	125	150
UNIT MODEL NUMBER		60	80	100	125	150
HEIGHTS: Overall.....	A	96½	96½	96½	110½	110½
w/Burner and Trim....	B	121½	121½	121½	129	129
Steam Outlet.....	C	81	81	81	95	95
Stack.....	D	97½	97½	97½	111½	111½
Tube Clearance.....	E	155	155	155	179	179
Bottom Blowdown.....	F	14½	14½	14½	14½	14½
Feedwater.....	G	48	48	48	55	55
Surface Blowdown.....	H	67	67	67	81	81
WIDTHS: Overall.....	I	97	100	101	113½	114½
Overall – Water Column	J	87	90	97	103½	109
CL To Stack.....	K	32	35	38	41½	44
CL To Steam Outlet...	L	31½	33½	36½	39½	42
Over Jacket.....	M	56	60	66	72	77
CONNECTIONS:						
Feedwater.....	N	1	1¼	1¼	1¼	1¼
Auxillary Conn.....	P	1½	1½	1½	2	2
Surface Blowdown ....	Q	1	1	1	1	1
Stack Conn OD .....	R	11⅞	15⅞	15⅞	15⅞	15⅞
Handholes 3" x 4"....	S	4	4	4	4	4
HIGH PRESSURE						
Steam Nozzle.....	T	3†	3†	4†	4†	4†
Bottom Blowdown.....	U	1¼	1¼	1¼	1¼	1¼
LOW PRESSURE						
Steam Nozzle.....	T	4*	6*	6*	6*	6*
Bottom Blowdown.....	U	1½	1½	1½	1½	1½

NOMINAL BOILER HORSEPOWER		60	80	100	125	150	
UNIT MODEL NUMBER		60	80	100	125	150	
Output .....	MBH	2009	2678	3348	4184	5021	
Steam Flow.....	LBS/HR	2070	2760	3450	4312	5175	
Input Gas.....	CU. FT.	2511	3348	4184	5230	6277	
Input #2 Oil .....	GAL	17.94	23.91	29.88	37.35	44.83	
Input Propane.....	CU. FT.	1004	1339	1674	2092	2511	
Heating Surface		SQ. FT.	243	288	347	460	495
Furnace Volume		CU. FT.	10.97	16.00	24.89	41.83	51.93
Steam Storage Vol		CU. FT.	12.73	13.95	15.91	18.00	20.45
Disengaging Area		SQ. FT.	9.86	10.80	12.32	13.94	15.83
Water Capacity NWL		GAL	317	348	396	542	614
Water Weight NWL		LBS	2640	2891	3294	4508	5109
Water Capacity Full		GAL	413	452	515	677	767
Water Weight Full		LBS	3432	3759	4284	5629	6381
Shipping Weight 15#		LBS	7300	7950	9100	11300	11900
Shipping Weight 150#		LBS	7500	8200	9400	11800	12400

## Notes:

1. Steam Output—Based On Steam From And At 212°F.
2. Furnace Volume Is Furnace Only  
(Semi-Wet Backed Turnaround Not Included).
3. Shipping Weights Are Based On Units With  
Burner Firing Natural Gas

## STANDARD TRIM (BOILER)

1. ASME Safety Valve(s).
2. Packaged with Webster burner, LMV3 Flame Safeguard
3. Water Column w/Water Level Gauge Glass,  
Low Water Cutoff/Pump Control, Blowdown Valve.
4. Operating Pressure Control
5. High Limit Pressure Control (Manual Reset).
6. Firing Rate Control (With Modulating Burner)
7. Pressure Gauge w/Shutoff And Gauge Cocks.
8. Control Circuit Terminal Strips.
9. Auxiliary Low Water Cutoff, Probe Type

## STANDARD FEATURES:

1. Units Designed And Fabricated To ASME Boiler  
And Pressure Vessel Code Requirements.  
Section IV—15 psig. Section I—150 psig
2. Insulated With 2"—8 Lb. Density Mineral Fiber Insulation.
3. Jacket Material 22 Gauge Galvanized—Phosphate Coated Steel.
4. Removable Bottom Lid
5. Turbulators

NOTE: \* 150 PSIG RF Flange  
† 300 PSIG RF Flange

NOTE: All Dimensions Are Approximate And May Be Used For Layout Only.  
SUPERIOR BOILER WORKS, Inc Reserves The Right To Change  
Dimensions Due To Product Revisions Or Job Requirements.