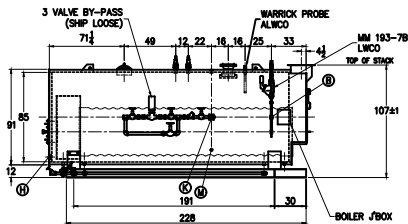
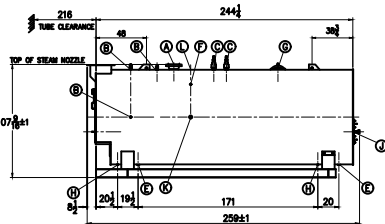
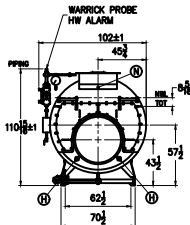


PRELIMINARY
NOT FOR CONSTRUCTION



SIEMENS DP TRANSDUCER



| BOILER CONNECTIONS | | RATINGS & CAPACITIES | | LTH | DATE | REVISION | BY | REPRESENTATIVE |
|------------------------|----------------|------------------------------|-----------------|-----|------------|----------|----|----------------|
| A.(1) STEAM OUTLET | 8" 300# FLANGE | HORSEPOWER | 600 | | | | | ? |
| B.(4) LWCO | 1" NPT | DESIGN PRESSURE | 150 PSIG STEAM | | | | | |
| C.(2) SAFETY VALVE | 2" NPT | GROSS OUTPUT | 20,085 MBH | | | | | |
| D.(1) SAFETY VALVE | | STEAM (FROM & AT 212°F) | 20,700 Lbs/Hr | | | | | |
| E.(2) BOILER BLOWDOWN | 1 1/2" NPT | HEAT RELEASE: (FURNACE ONLY) | 144471 BTU/CuFt | | | | | |
| F.(1) SURFACE BLOWDOWN | 1" NPT | RATED INPUT | 24,500 MBH | | | | | |
| G.(1) MANWAY | 12" x 16" | HEATING SURFACE (ASME) | 1865 SqFt | | | | | |
| H.(5) HANDHOLE | 3" x 4" | FURNACE HEATING SURFACE | 206.18 SqFt | | | | | |
| J.(1) CLEANOUT | 19" ID | FURNACE VOLUME | 173.78 CuFt | | | | | |
| K.(2) FEEDWATER | 2" NPT | TURNAROUND VOLUME | 52.40 CuFt | | | | | |
| L.(1) AUXILIARY | 2" NPT | STEAMING VOLUME | 100.14 CuFt | | | | | |
| M.(1) LOW FIRE HOLD | 1" NPT | STEAM RELEASE AREA | 104.79 SqFt | | | | | |
| N.(1) STACK TEMP | 1/2" NPT | WATER CAPACITY: | | | | | | |
| P.() | | (FULL) | 3,198 Gal | ● | 26,801 Lbs | | | |
| Q.() | | (NWL) | 2,449 Gal | ● | 20,371 Lbs | | | |
| R.() | | SHIPPING WEIGHT: | 30,800 Lbs | | | | | |
| S.() | | | | | | | | |

NOTES

- ALL CONTROLS MOUNTED AS PER SPECIFICATION SHEET.
- SPECIFICATION SHEET TAKES PRIORITY OVER R & D SHEET.
- BOILER DESIGN CODE ASME SECTION I.
- BOILER INSULATED WITH 2" - 8# DENSITY MINERAL FIBER INSULATION WITH 22 GAUGE STEEL JACKET.
- ALL DIMENSIONS ARE ±1/2" UNLESS OTHERWISE NOTED.
- HORSEPOWER & RELATED INFO BASED ON 3 Sft FIRING.

SUPERIOR
BOILER

WICHITA

SCALE

1/64

CHECKED BY

DRAWN BY

BOILER NO.

10-3-1800-S150-

DRAWING No.

?

DATE

DATE

THIS DRAWING IS THE PROPERTY OF SUPERIOR BOILER AND SHALL NOT BE REPRODUCED IN PART OR IN WHOLE, & NONE OF ITS INFORMATION SHALL BE REVEALED WITHOUT PERMISSION OR TO THE DETRIMENT OF THE OWNER. IT MUST BE RETURNED UPON REQUEST.