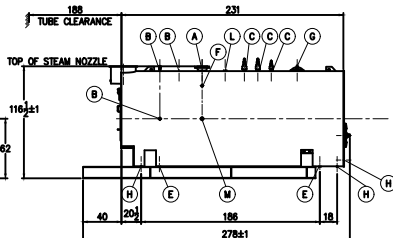
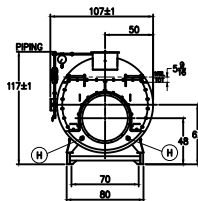
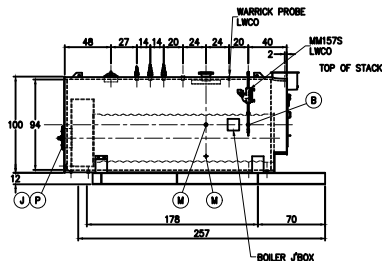
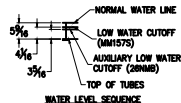
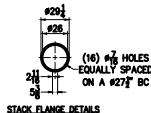
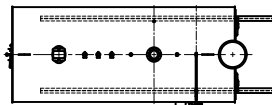


PRELIMINARY
NOT FOR CONSTRUCTION



BOILER CONNECTIONS	RATINGS & CAPACITIES	L/W	DATE	REVISION	BY	REPRESENTATIVE
A.(1) STEAM OUTLET 8" 300# FLANGE	HORSEPOWER 700 HP*					X
B.(4) LWCO 1" NPT	DESIGN PRESSURE 150 PSIG STEAM					
C.(3) SAFETY VALVE 2" NPT	GROSS OUTPUT 23433 MBH*					
D.(1) SAFETY VALVE	STEAM (FROM & AT 212°F) 24150 LB/H*					
E.(2) BOILER BLOWDOWN 2" NPT	HEAT RELEASE (FURNACE ONLY) 153,968 BTU/CuFt*					
F.(1) SURFACE BLOWDOWN 1" NPT	RATED INPUT 29291 MBH*					
G.(1) MANWAY 12" x 16"	HEATING SURFACE (ASME) 2125 SqFt					
H.(5) HANDHOLE 3" x 4"	FURNACE HEATING SURFACE 210.19 SqFt					
J.(1) CLEANOUT 20" ID	FURNACE VOLUME 190.24 CuFt					
K.(2) FEEDWATER 2" NPT	TURNAROUND VOLUME 58.0 CuFt					
L.(1) AUXILIARY/VENT 2" NPT	STEAMING VOLUME 93.23 CuFt					
M.(1) LOW FIRE HOLD 1" NPT	STEAM RELEASE AREA 102.96 SqFt					
N.(1) STACK TEMP 1/2" NPT	WATER CAPACITY:					
P.(1) SIGHT PORT 1" NPT	(FULL) 3,854 Gal @ 32,055 Lbs					
Q.(1)	(NML) 3,156 Gal @ 26,254 Lbs					
R.(1)	SHIPPING WEIGHT: 35,000 Lbs					
S.(1)						

NOTES		SUPERIOR BOILER		CHECKED BY	DATE
1. ALL CONTROLS MOUNTED AS PER SPECIFICATION SHEET.		WICHITA		M. MATALEAH	
2. SPECIFICATION SHEET TAKES PRIORITY OVER R & D SHEET.					
3. BOILER DESIGN CODE ASME SECTION I.		BOILER MODEL		DRAWN BY	DATE
4. BOILER INSULATED WITH 2" - 8# DENSITY MINERAL FIBER INSULATION WITH 22 GAUGE STEEL JACKET.		10-X-2100-S150-M			
5. ALL DIMENSIONS ARE ±1/2" UNLESS OTHERWISE NOTED.		SCALE		DRAWING No	
*6. HORSEPOWER & RELATED INFO BASED ON 3.0 SqFt FIRING.		1/70			

THIS DRAWING IS THE PROPERTY OF SUPERIOR BOILER AND SHALL NOT BE REPRODUCED IN PART OR IN WHOLE, & NONE OF ITS INFORMATION SHALL BE REVEALED WITHOUT PERMISSION OR TO THE DETRIMENT OF THE OWNER. IT MUST BE RETURNED UPON REQUEST.
