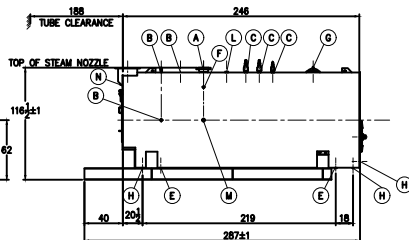
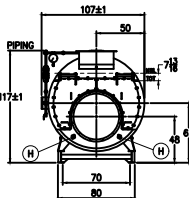
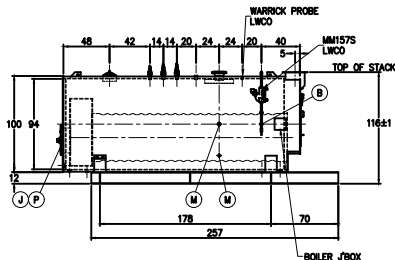
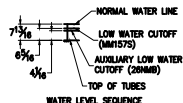
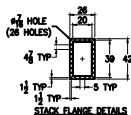
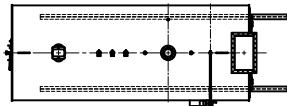


PRELIMINARY
NOT FOR CONSTRUCTION



BOILER CONNECTIONS		RATINGS & CAPACITIES		LTR	DATE	REVISION	BY	REPRESENTATIVE
A.(1) STEAM OUTLET	8" 300# FLANGE	HORSEPOWER	750 HP*					X
B.(4) LWCO	1" NPT	DESIGN PRESSURE	150 PSIG STEAM					
C.(3) SAFETY VALVE	2" NPT	GROSS OUTPUT	25,106 MBH*					
D.() SAFETY VALVE		STEAM (FROM & AT 212°F)	25,875 LB/hr*					
E.(2) BOILER BLOWDOWN	2" NPT	HEAT RELEASE: (FURNACE ONLY)	151,926 BTU/CuFt*					
F.(1) SURFACE BLOWDOWN	1" NPT	RATED INPUT	31,383 MBH*					X
G.(1) MANWAY	12" x 16"	HEATING SURFACE (ASME)	2281 SqFt					
H.(5) HANDHOLE	3" x 4"	FURNACE HEATING SURFACE	227.61 SqFt					
J.(1) CLEANOUT	24" ID	FURNACE VOLUME	206.57 CuFt					
K.(2) FEEDWATER	2" NPT	TURNAROUND VOLUME	60.45 CuFt					
L.(1) AUXILIARY/VENT	2" NPT	STEAMING VOLUME	102.15 CuFt					
M.(1) LOW FIRE HOLD	1" NPT	STEAM RELEASE AREA	110.96 SqFt					
N.(1) STACK TEMP	1/2" NPT	WATER CAPACITY:						
P.(1) SIGHT PORT	1" NPT	(FULL)	4,126 Gal @ 34,319 Lbs					
Q.()		(NWL)	3,362 Gal @ 27,964 Lbs					
R.()		SHIPPING WEIGHT:	40,400 Lbs					
S.()								

NOTES		SUPERIOR BOILER WORKS, INC. HITCHCOCK, KANSAS		CHECKED BY	DATE	THIS DRAWING IS THE PROPERTY OF SUPERIOR BOILER WORKS & SHALL NOT BE REPRODUCED IN PART OR IN WHOLE, & NONE OF ITS INFORMATION SHALL BE REVEALED WITHOUT PERMISSION OR TO THE DETRIMENT OF THE OWNER. IT MUST BE RETURNED UPON REQUEST.
1. ALL CONTROLS MOUNTED AS PER SPECIFICATION SHEET. 2. SPECIFICATION SHEET TAKES PRIORITY OVER R & D SHEET. 3. BOILER DESIGN CODE ASME SECTION I. 4. BOILER INSULATED WITH 2" - 8# DENSITY MINERAL FIBER INSULATION WITH 22 GAUGE STEEL JACKET. 5. ALL DIMENSIONS ARE ±1/2" UNLESS OTHERWISE NOTED. *6. HORSEPOWER & RELATED INFO BASED ON 3.0 SqFt FIRING.		WICHITA		DRAWN BY M. MATALLAH	4-21-2021	
		BOILER MODEL 10-X-2250-S150-M		SCALE 1/70	DRAWING No ?	