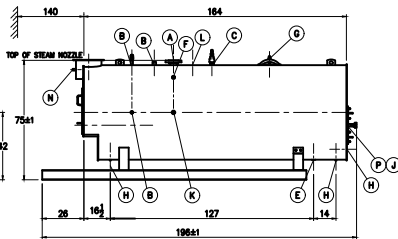
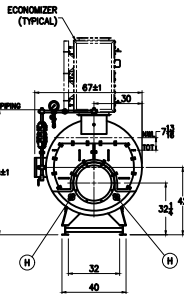
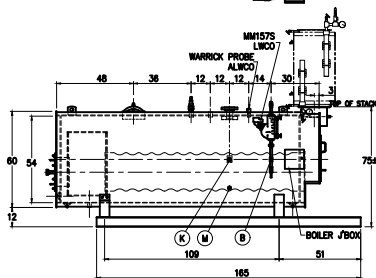
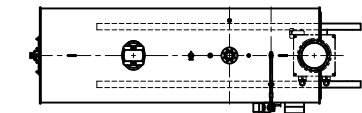
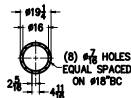


PRELIMINARY  
NOT FOR CONSTRUCTION



BOILER CONNECTIONS		RATINGS & CAPACITIES		LTR DATE		REVISION		BY		REPRESENTATIVE:	
A.(1) STEAM OUTLET	4" 300# FLANGE	HORSEPOWER	100*								X
B.(4) LWCO	1" NPT	DESIGN PRESSURE	150 PSIG STEAM								
C.(1) SAFETY VALVE	1 1/2" NPT	GROSS OUTPUT	3348 MBH*								
D.(1) SAFETY VALVE		STEAM (FROM & AT 212F)	3450 Lbs/Hr*								
E.(1) BOILER BLOWDOWN	1 1/4" NPT	HEAT RELEASE (FURNACE ONLY)	148,466 BTU/CuFt*								
F.(1) SURFACE BLOWDOWN	1" NPT	RATED INPUT	4184 MBH*								
G.(1) MANWAY	12" x 16"	HEATING SURFACE (ASME)	418 SqFt								X
H.(5) HANDHOLE	3" x 4"	FURNACE HEATING SURFACE	65.07 SqFt								X
J.(1) CLEANOUT	18" PIPE	FURNACE VOLUME	28.18 CuFt								
K.(2) FEEDWATER	1 1/4" NPT	TURNAROUND VOLUME	24.09 CuFt								
L.(1) AUXILIARY	1 1/2" NPT	STEAMING VOLUME	19.84 CuFt								
M.(1) LOW FIRE HOLD	1" NPT	STEAM RELEASE AREA	40.44 SqFt								
N.(1) STACK TEMP	1/2" NPT	WATER CAPACITY:									
P.( )		(FULL) 972 Gal	8.085 Lbs								
Q.( )		(NVL) 825 Gal	6.863 Lbs								
R.( )		SHIPPING WEIGHT:	10,200 Lbs								
S.( )											
				NOTES		SUPERIOR BOILER		CHECKED BY		DATE	
				1. ALL CONTROLS MOUNTED AS PER SPECIFICATION SHEET. 2. SPECIFICATION SHEET TAKES PRIORITY OVER R & D SHEET. 3. BOILER DESIGN CODE ASME SECTION I. 4. BOILER INSULATED WITH 2" 8# DENSITY MINERAL FIBER INSULATION WITH 22 GAUGE STEEL JACKET. 5. ALL DIMENSIONS ARE ±1/2" UNLESS OTHERWISE NOTED. 6. HORSEPOWER & RELATED INFO BASED ON 4.0 SqFt FIRING.		WICHITA		DRAWN BY		DATE	
								T. THURSTON		11-8-22	
						BOILER MODEL				THIS DRAWING IS THE PROPERTY OF SUPERIOR BOILER & SHALL NOT BE REPRODUCED IN PART OR IN WHOLE, & NONE OF ITS INFORMATION SHALL BE REVEALED WITHOUT PERMISSION OR TO THE DETRIMENT OF THE OWNER. IT MUST BE RETURNED UPON REQUEST.	
						10-X-400-S150-M					
						SCALE		DRAWING No			
						1/42					