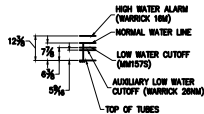
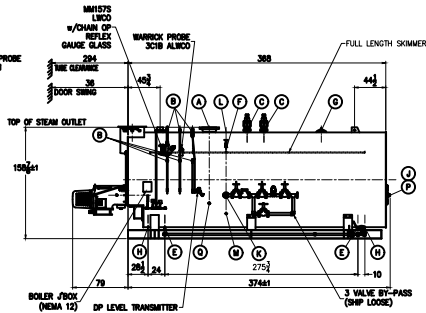
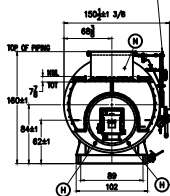
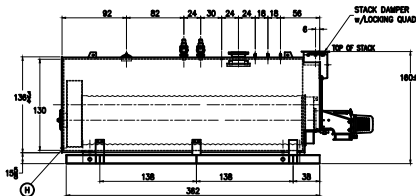


STACK DETAIL



WATER LEVEL SEQUENCE



BOILER CONNECTIONS		RATINGS & CAPACITIES	
A(1) STEAM OUTLET	1" 300# FLG	HORSEPOWER	2200*
B(4) LWCO	1" NPT	DESIGN PRESSURE	150 PSIG
C(2) SAFETY VALVE	1" 300# FLG	GROSS OUTPUT	73,645 MBHP
D(1) SAFETY VALVE	1" 300# FLG	STEAM (FROM & AT 212°F)	78,900 LBS/HOUR
E(2) BOILER BLOWDOWN	1" NPT	HEAT RELEASING (FURNACE ONLY)	144,128 BTU/HOUR
F(1) SURFACE BLOWDOWN	1" NPT	RATED INPUT	82,000 MBHP
G(1) MANWAY	12" x 16"	HEATING SURFACE (ASME)	7784 S&F
H(5) HANDHOLE	3" x 4"	FURNACE HEATING SURFACE	505.09 S&F
I(1) CLEANDRIFT	3" 300# FLG	FURNACE (ONLY) VOLUME	638.71 CUFT
J(1) FEEDWATER	3" 300# FLG	FURNACE VOLUME	10.83 CUFT
K(1) VENT	1" NPT	STEAMING VOLUME	344.42 CUFT
L(1) LOW FIRE HOLD	1" NPT	STEAM RELEASE AREA	240.80 S&F
M(1) STACK TEMP	1 1/2" NPT	WATER CAPACITY	
N(1) HIGHPOINT	1 1/2" NPT	(FULL)	11,182 Gals
O(1) CHEMICAL FEED	1" NPT	(W/L)	8,608 Gals
P(1)		SHIPPING WEIGHT:	100,700 Lbs

REV	DATE	REVISION	BY	REPRODUCTION
1				
2				
3				
4				
5				
6				
7				
8				
9				
10				
11				
12				
13				
14				
15				
16				
17				
18				
19				
20				
21				
22				
23				
24				
25				
26				
27				
28				
29				
30				
31				
32				
33				
34				
35				
36				
37				
38				
39				
40				
41				
42				
43				
44				
45				
46				
47				
48				
49				
50				
51				
52				
53				
54				
55				
56				
57				
58				
59				
60				
61				
62				
63				
64				
65				
66				
67				
68				
69				
70				
71				
72				
73				
74				
75				
76				
77				
78				
79				
80				
81				
82				
83				
84				
85				
86				
87				
88				
89				
90				
91				
92				
93				
94				
95				
96				
97				
98				
99				
100				

PRELIMINARY
NOT FOR CONSTRUCTION

NOTES

1. ALL CONTROLS MOUNTED AS PER SPECIFICATION SHEET.
2. SPECIFICATION SHEET TAKES PRECEDENCE OVER R & D SHEET.
3. BOILER DESIGN CODE ASME SECTION I.
4. BOILER INSULATED WITH 2" - 3" DENSITY MINERAL FIBER INSULATION WITH 34 GAUGE WEATHER PROOF STAINLESS STEEL JACKET.
5. ALL DIMENSIONS ARE 31/2" UNLESS OTHERWISE NOTED.
6. HORSEPOWER & RELATED INFO BASED ON 3.5 S&F/FIRING.

		DESIGNED BY	DATE	THIS DRAWING IS THE PROPERTY OF WARRICK BOILER WORKS & SHALL NOT BE REPRODUCED IN PART OR IN WHOLE, & NONE OF ITS INFORMATION SHALL BE REVEALED WITHOUT PERMISSION OR TO THE DETRIMENT OF THE COVER. IT MUST BE RETURNED UPON REQUEST.
		M. MATAHALL	2-19-20	
		10-3.5-7700-S150-WP-G		
1/94				